

Updates & Errata

After publication of the report, *Type 2 Diabetes in Manitoba*, the following updates were required:

February 17, 2021 – Erratum

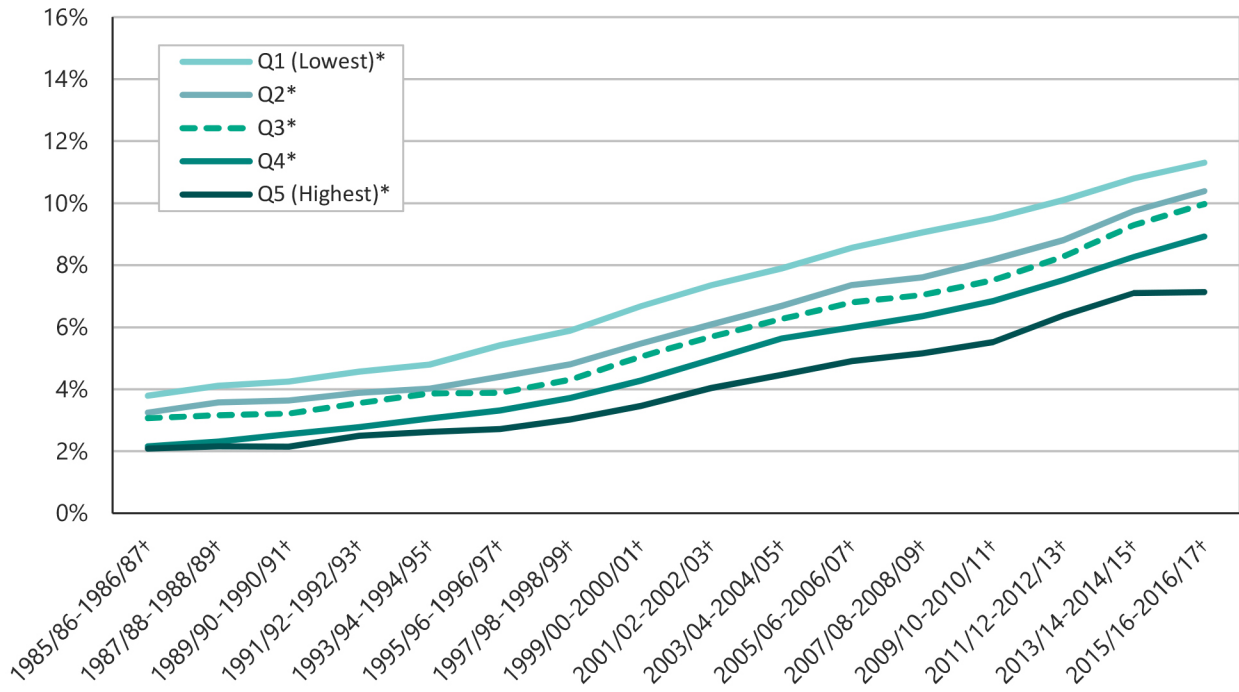
- **Pages 23 and 25**
Figures 3.4, 3.5, and 3.7 were replaced

The web version of the report has been updated.

The updated pages follow.

Figure 3.4: Prevalence of Any Diabetes Among Adult Manitobans by Urban Income Quintile

Crude percent using NDSS definition of diabetes, age 18+, 1985/86-1986/87 to 2015/16-2016/17

* indicates a statistically significant increase over time for that income quintile ($p < .05$)† indicates a statistically significant difference between the lowest and highest income quintile for that fiscal year ($p < .05$)**Figure 3.5: Prevalence of Any Diabetes Among Adult Manitobans by Rural Income Quintile**

Crude percent using NDSS definition of diabetes, age 18+, 1985/86-1986/87 to 2015/16-2016/17

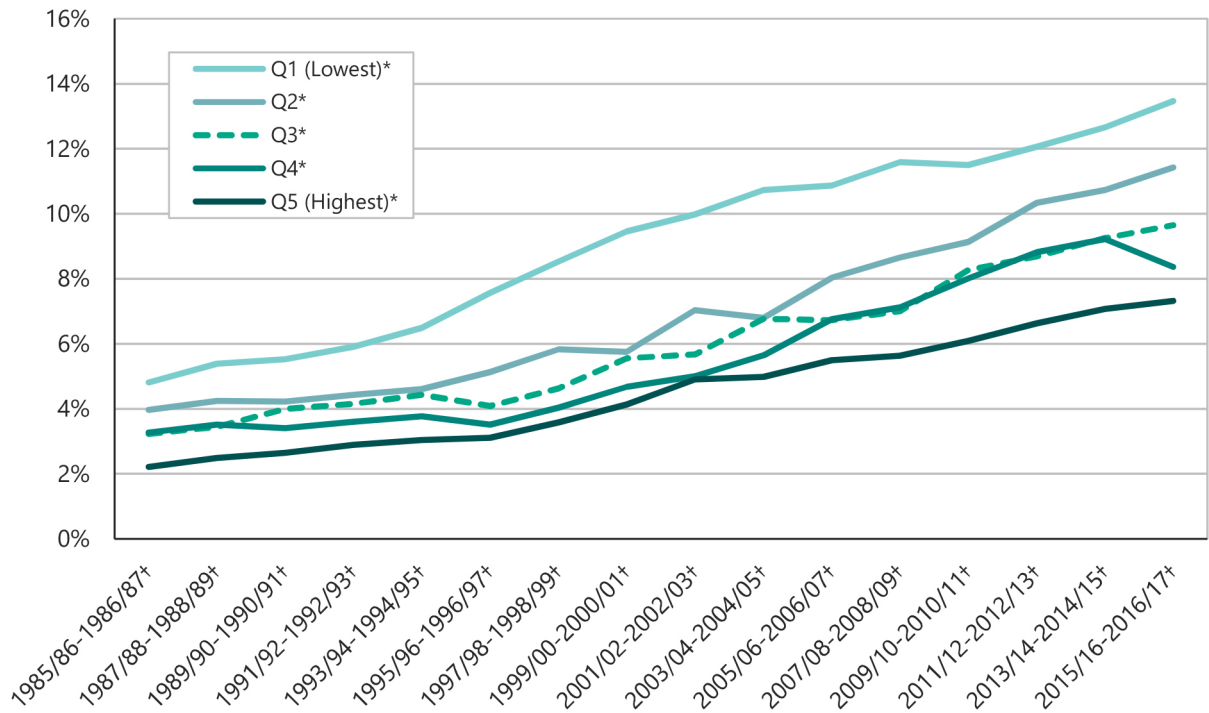
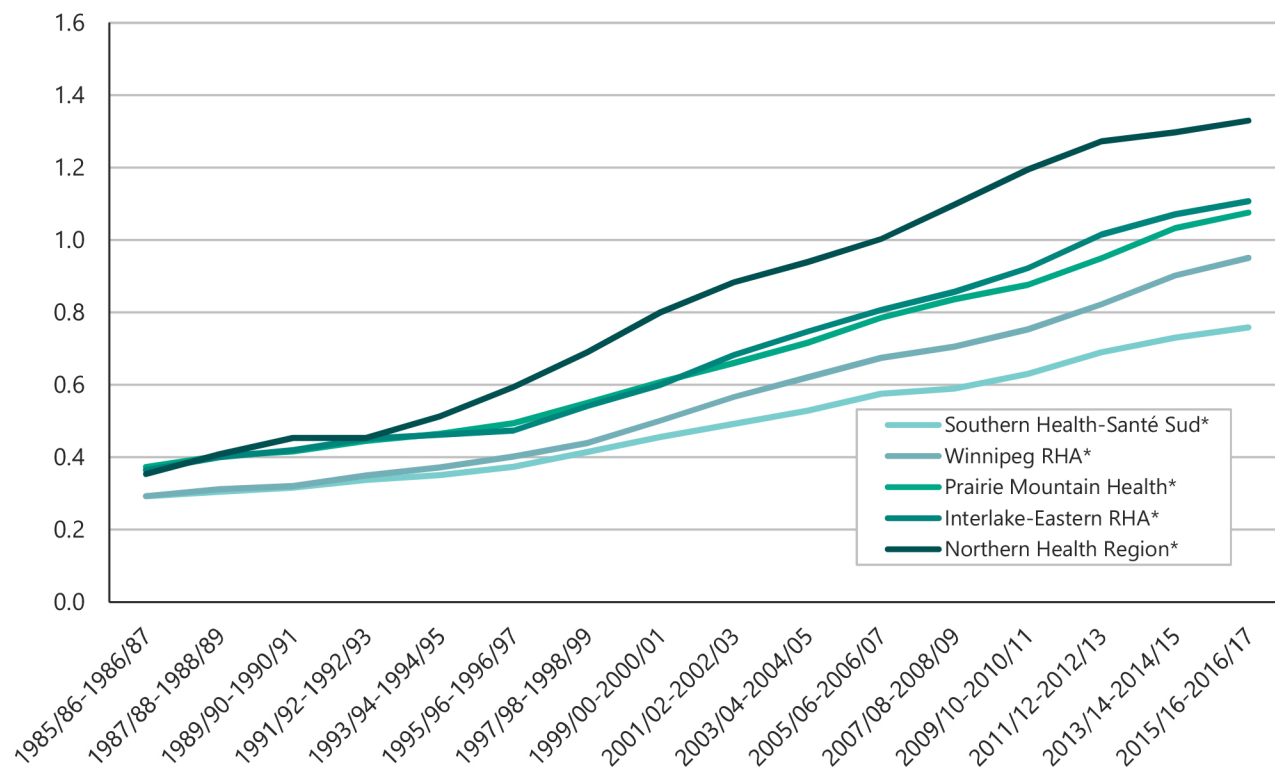
* indicates a statistically significant increase over time for that income quintile ($p < .05$)† indicates a statistically significant difference between the lowest and highest income quintile for that fiscal year ($p < .05$)

Figure 3.7: Prevalence of Any Diabetes Among Adult Manitobans by Health Region

Crude rate per 1,000 people using NDSS definition of diabetes, age 18+, 1985/86-1986/87 to 2015/16-2016/17

* Indicates a statistically significant increase in prevalence over time for this region ($p < .05$)