

Manitoba Child Health Atlas 2004

July 2004



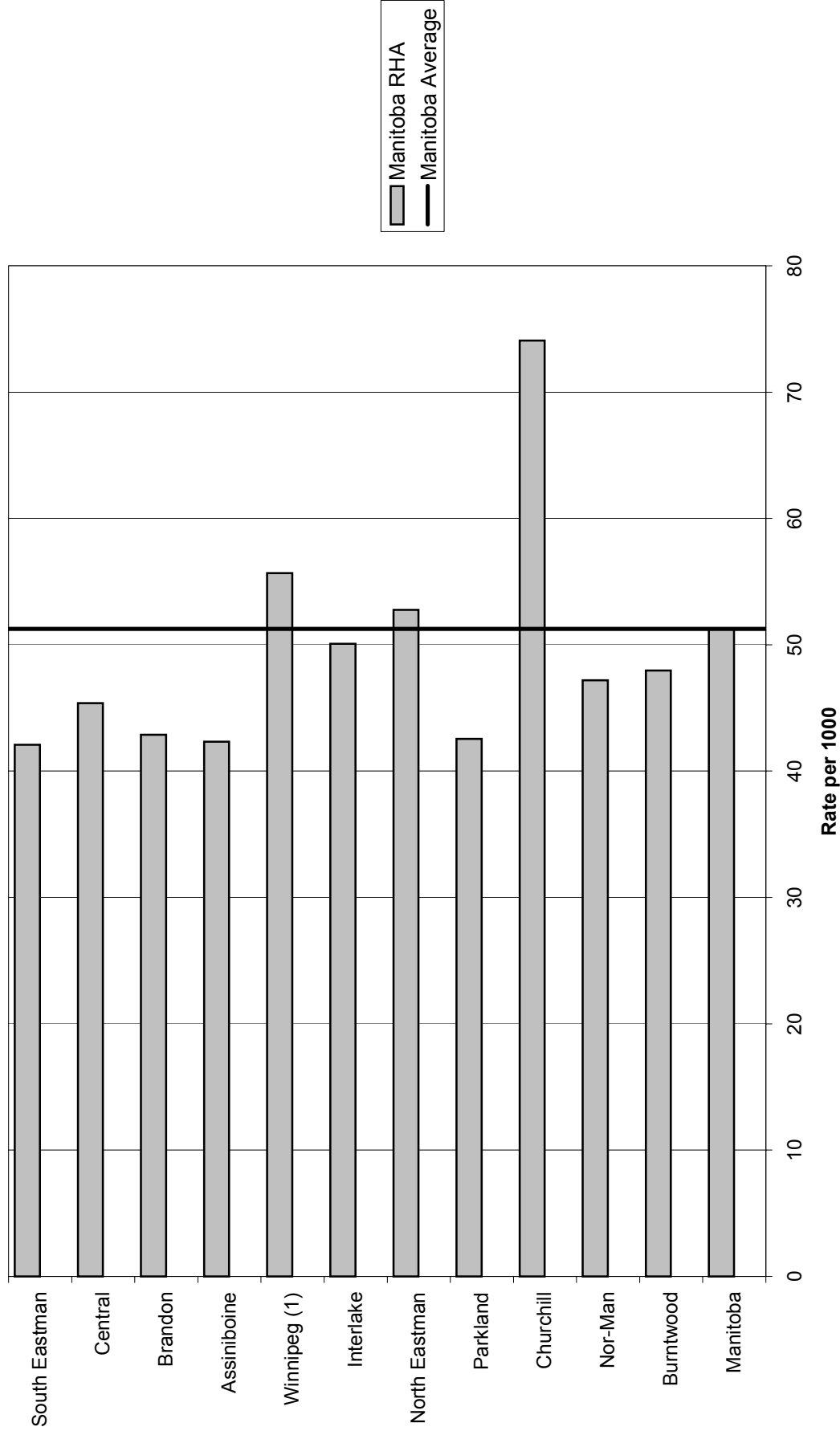
Manitoba Centre for Health Policy
Department of Community Health Sciences
Faculty of Medicine, University of Manitoba

The entire report is available on this WWW site:
http://www.umanitoba.ca/centres/mchp/reports/child_inequalities

Health Indicators: Low Birth Weight by Region

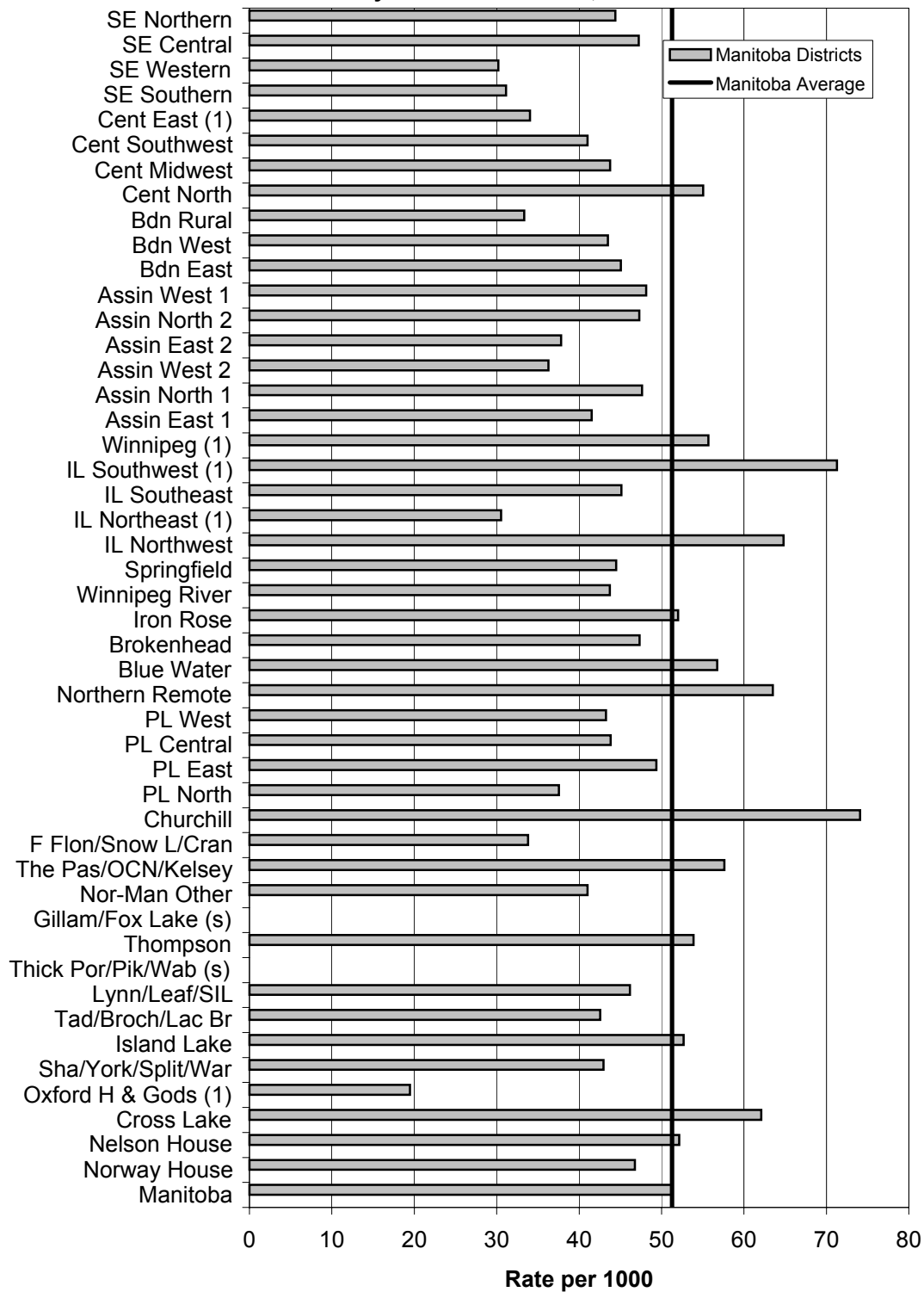
Low birth weight (LBW) rates are considered a key indicator of population health. LBW babies are at risk for a number of developmental, cognitive and health problems throughout childhood. The overall LBW (< 2500 g) rate in Manitoba for the years 1997-2001 was 51.26 per 1000 liveborn infants. Only Winnipeg RHA had a higher LBW than the provincial average. At the RHA district level, Interlake Southwest had a significantly higher LBW rate compared to the provincial average, whereas the rates in Central East, Interlake Northeast and Oxford House/Gods Lake were significantly lower than the provincial average. For the Winnipeg CAs, Inkster and Downtown had significantly higher LBW rates than the provincial average; Inkster's rate was also significantly higher than the Winnipeg average, whereas St. Boniface's rate was significantly lower. For the Winnipeg NCs, River East South, Inkster East and Downtown East all had LBW rates that were significantly higher than the provincial average; the Downtown East rate was also significantly higher than the Winnipeg average, whereas the rate for St. Boniface East was significantly lower.

**Low Birth Weight Rates
by Manitoba RHA, 1997-2001**



'1' indicates rate significantly different from the Manitoba mean

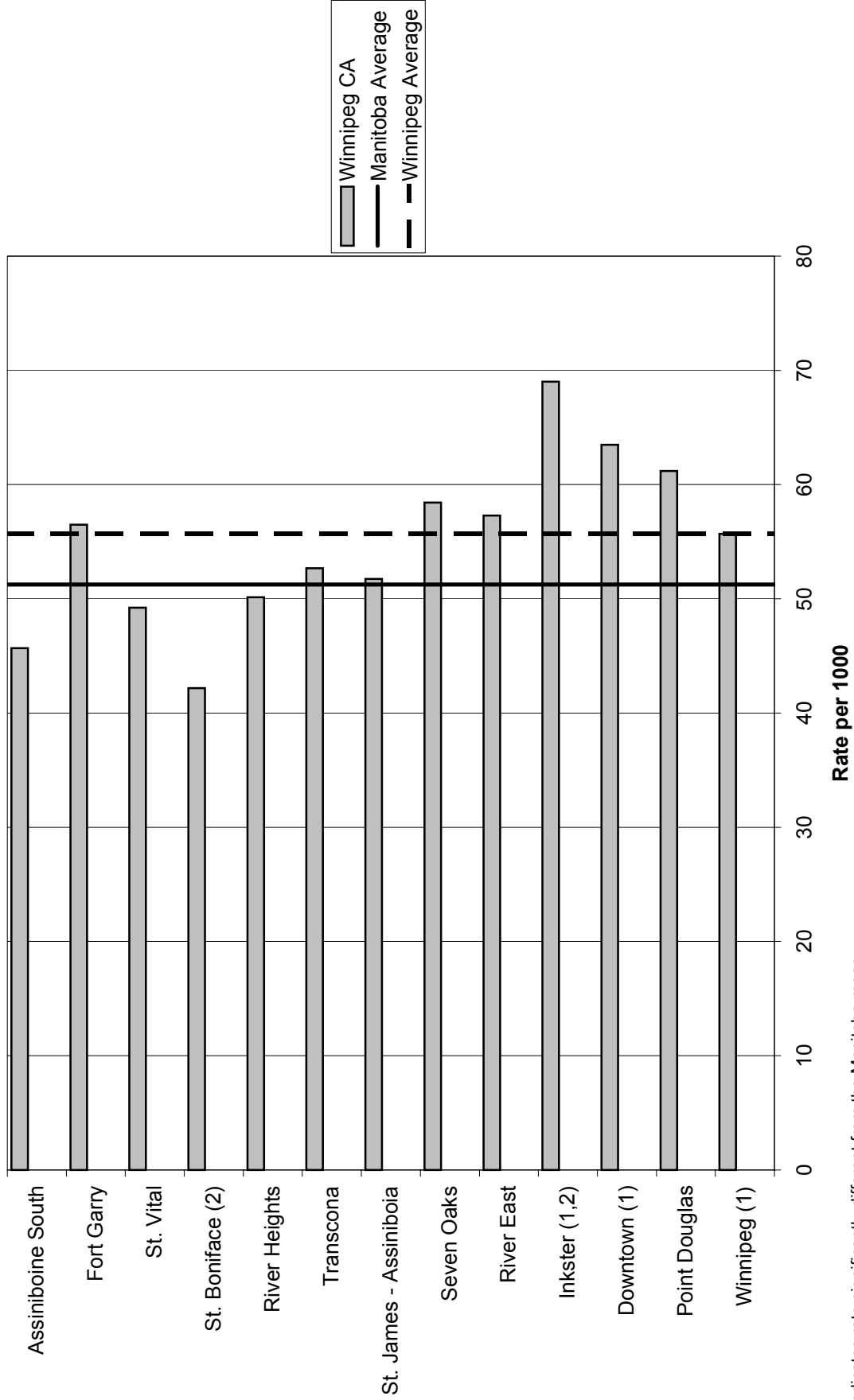
**Low Birth Weight Rates
by Manitoba Districts, 1997-2001**



'1' indicates rate significantly different from the Manitoba mean

's' indicates data suppressed due to small numbers

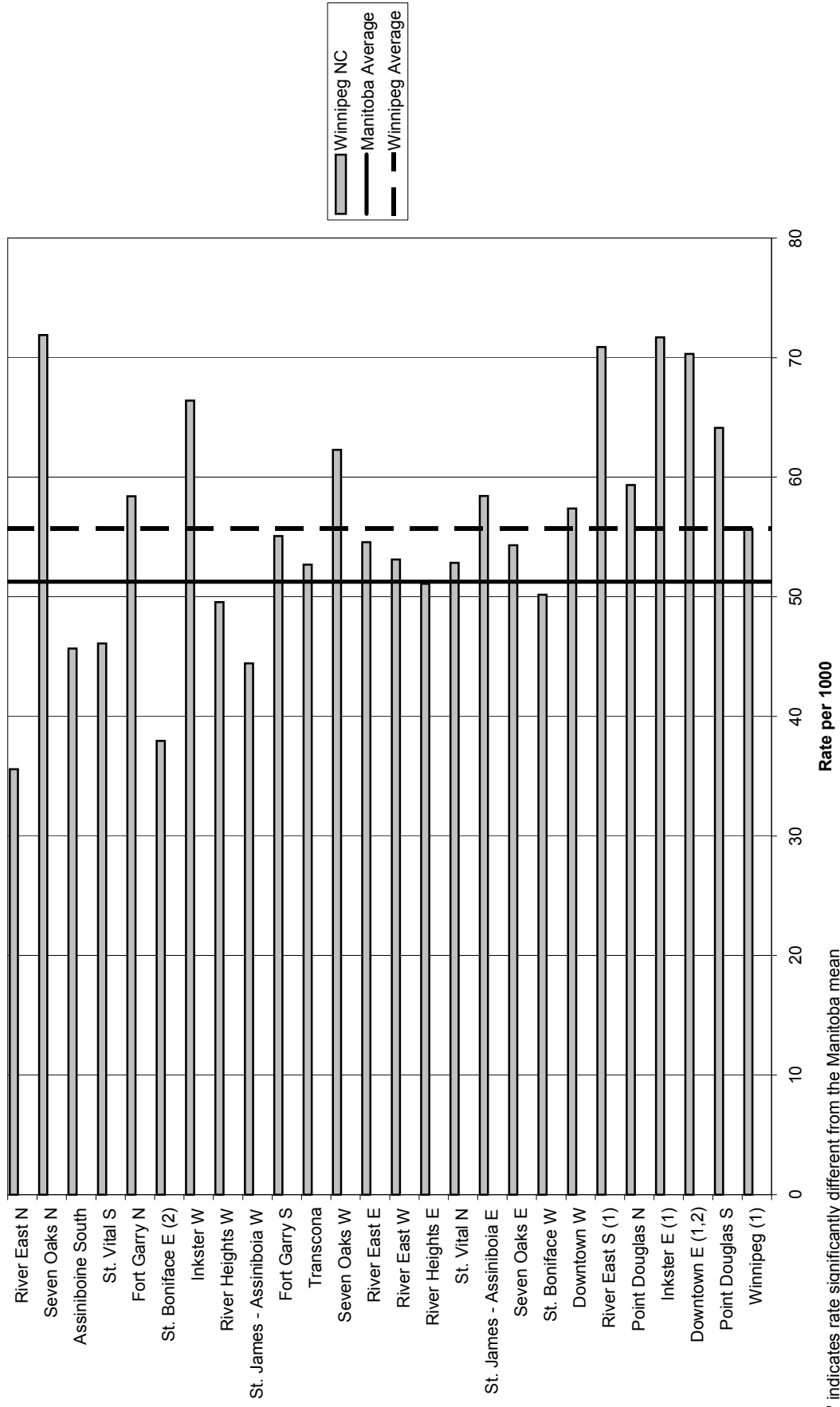
Low Birth Weight Rates
by Winnipeg CA, 1997-2001



'1' indicates rate significantly different from the Manitoba mean

'2' indicates rate significantly different from the Winnipeg mean

**Low Birth Weight Rates
by Winnipeg NC, 1997-2001**



'1' indicates rate significantly different from the Manitoba mean
'2' indicates rate significantly different from the Winnipeg mean

These definitions can be found in the Child Health Atlas Glossary:
http://www.umanitoba.ca/centres/mchp/reports/child_inequalities/glossary.shtml

[Low Birth Weight Rate](#)

[Regional Health Authority \(RHA\)](#)

[Regional Health Authority \(RHA\) District](#)

[Winnipeg Community Area \(CA\)](#)

[Neighbourhood Cluster \(NC\)](#)

[Socioeconomic Status \(SES\)](#)