

# Manitoba Child Health Atlas 2004

July 2004



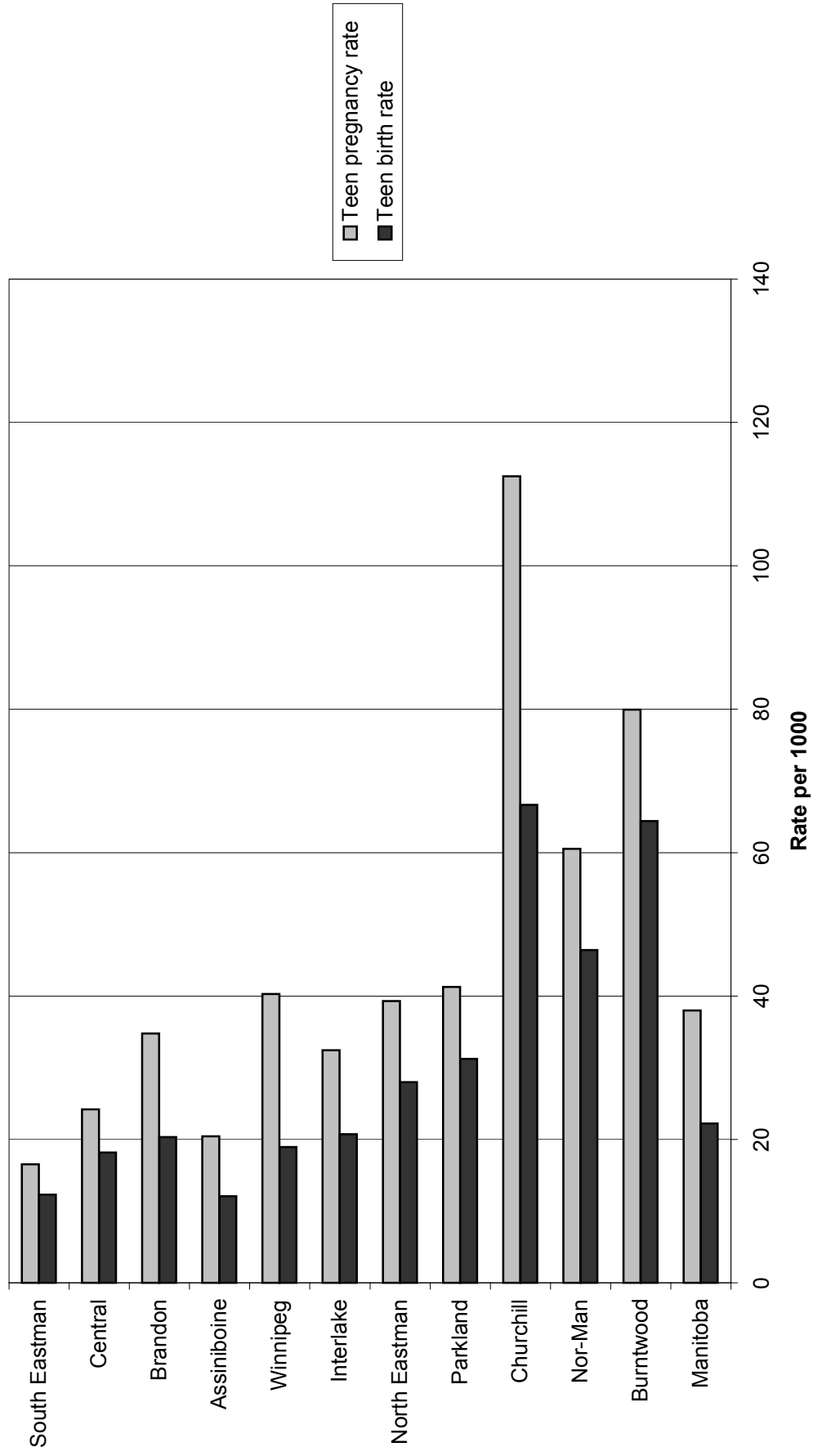
**Manitoba Centre for Health Policy**  
Department of Community Health Sciences  
Faculty of Medicine, University of Manitoba

The entire report is available on this WWW site:  
[http://www.umanitoba.ca/centres/mchp/reports/child\\_inequalities](http://www.umanitoba.ca/centres/mchp/reports/child_inequalities)

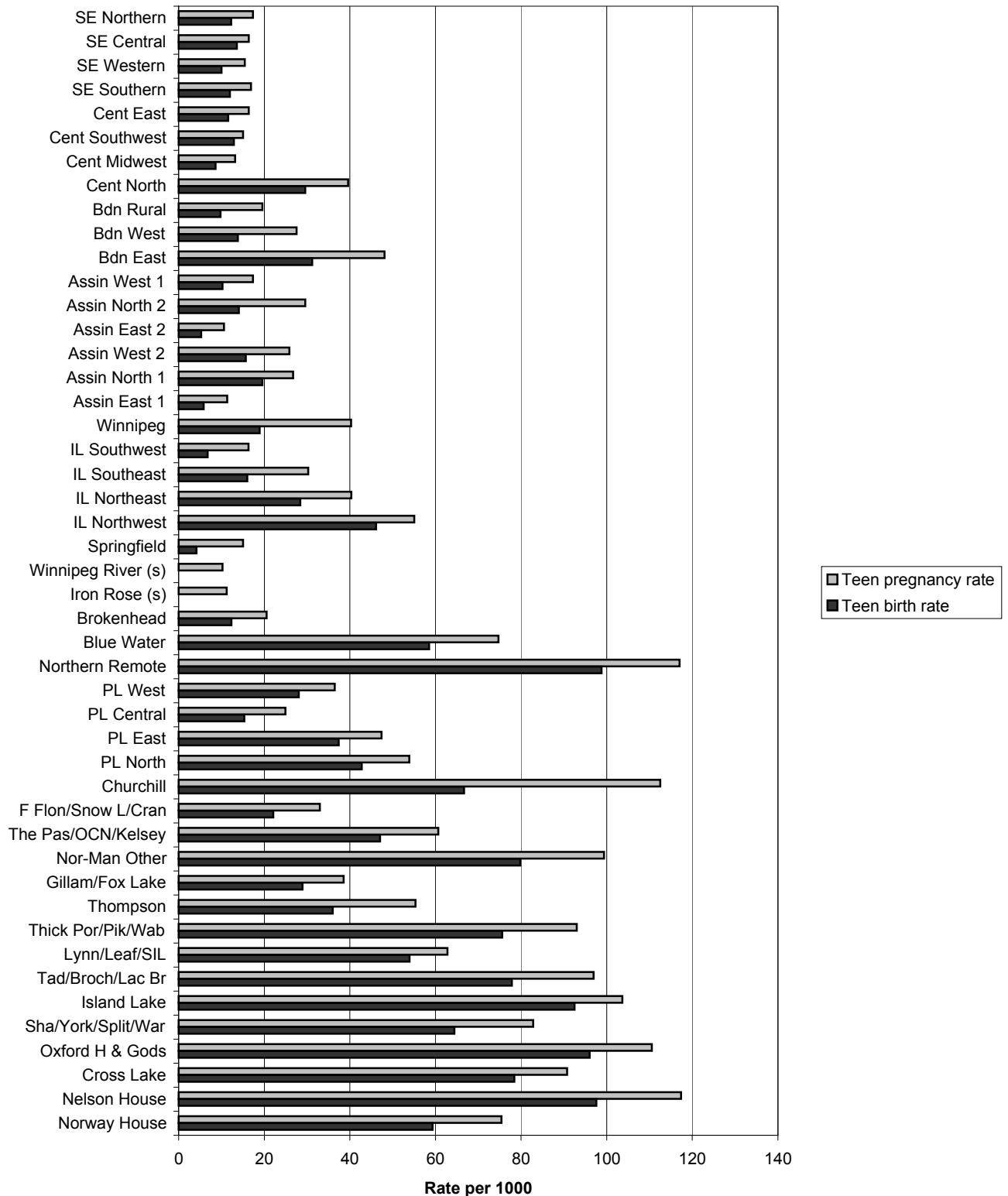
## Health Indicators: Teen Birth and Pregnancy Rates by Region

South Eastman, Assiniboine and Central RHAs tend to have significantly lower rates of teen pregnancy and birth than the provincial average, whereas Nor-Man, Churchill and Burntwood tend to have significantly higher rates than the provincial average. Interestingly, while Winnipeg tends to have higher teen pregnancy rates than the provincial average, the teen birth rates in Winnipeg tend to be lower than the provincial average. RHA districts that tend to have high teen pregnancy and birth rates include: Blue Water, Northern Remote, Interlake Northwest, The Pas/OCN/Kelsey, Nor-Man Other, Churchill, Lynn Lake/Leaf Rapids/South Indian Lake, Oxford House/Gods Lake, Tadoule/Brochet/Lac Brochet, Cross Lake, Island Lake, Thicket Portage/Pikwitonei/Wabowden, Norway House, Shamattawa/York Factory/Split Lake/War Lake, and Nelson House. Downtown and Point Douglas tend to have higher teen pregnancy and birth rates than the provincial and Winnipeg averages. At the Winnipeg NC level significantly higher teen pregnancy and birth rates are found for Downtown West, Point Douglas North, River East South, Inkster East, Downtown East and Point Douglas South.

**Teen Pregnancy and Birth Rates for Females Aged 12-19  
by Manitoba RHA, 1997-2001**

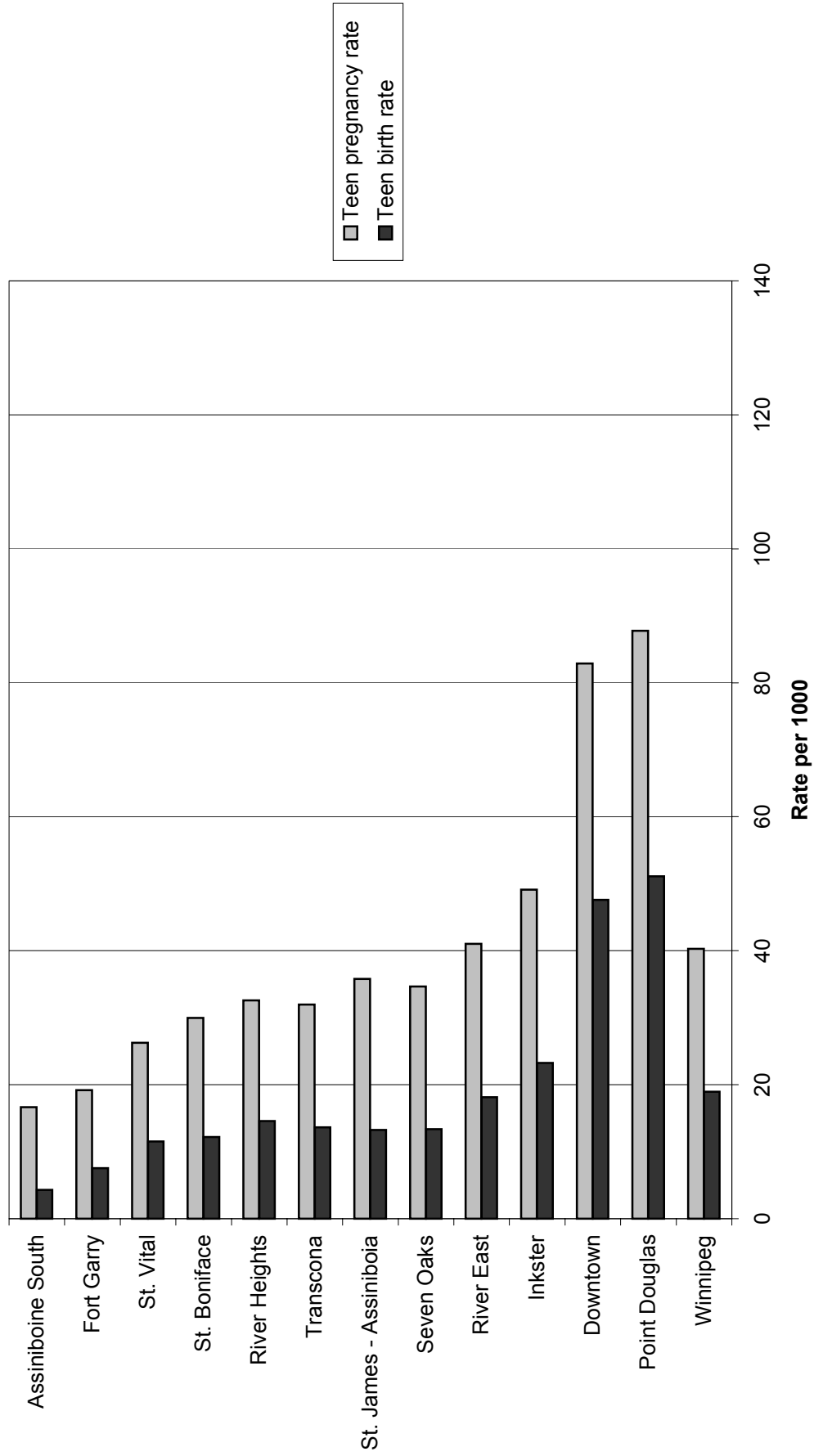


**Teen Pregnancy and Birth Rates for Females Aged 12-19  
by RHA District, 1997-2001**

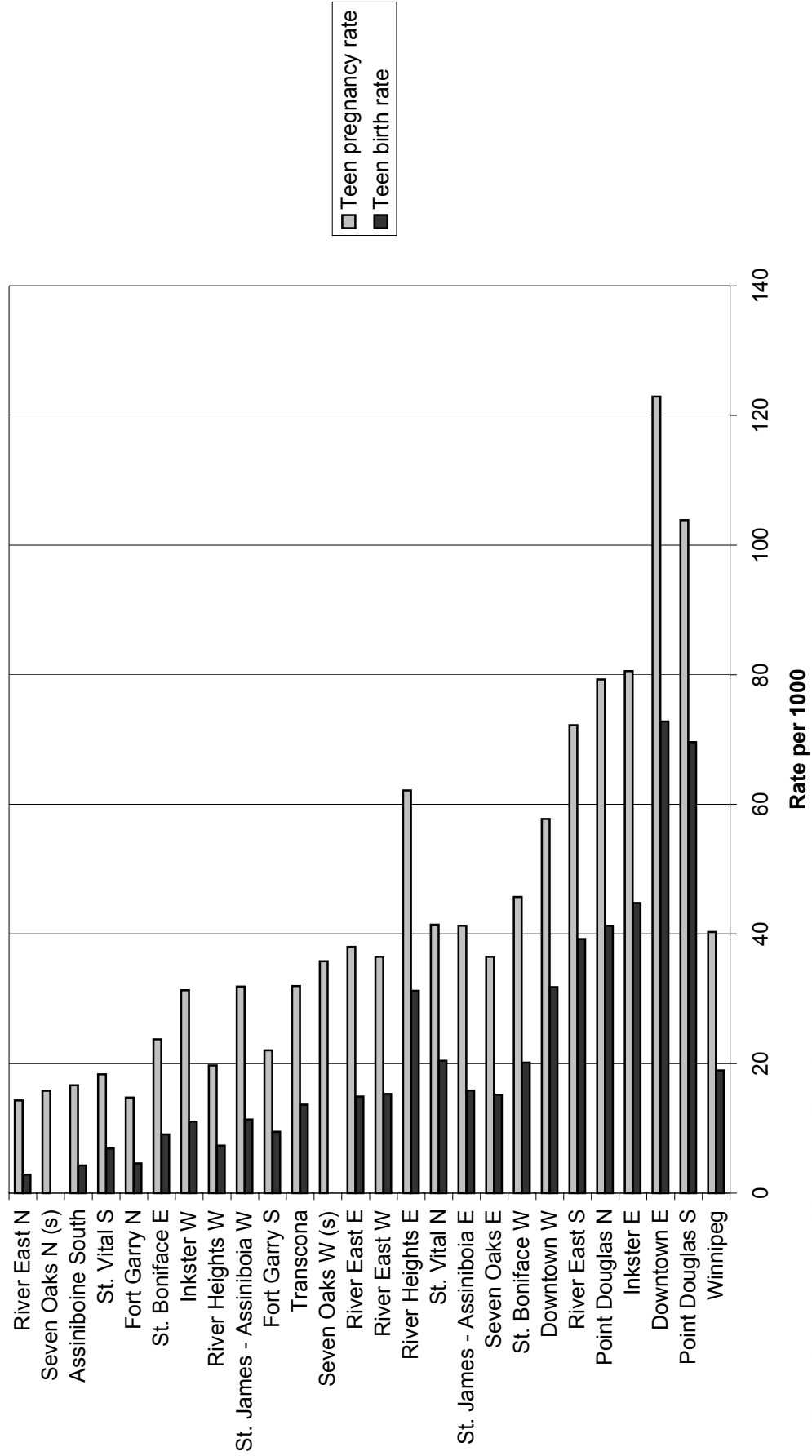


's' indicates data suppressed due to small numbers

**Teen Pregnancy and Birth Rates for Females Aged 12-19  
by Winnipeg CA, 1997-2001**



### Teen Pregnancy and Birth Rates for Females Aged 12-19 by Winnipeg NC, 1997-2001



's' indicates data suppressed due to small numbers

These definitions can be found in the Child Health Atlas Glossary:  
[http://www.umanitoba.ca/centres/mchp/reports/child\\_inequalities/glossary.shtml](http://www.umanitoba.ca/centres/mchp/reports/child_inequalities/glossary.shtml)

[Teen Birth Rate](#)

[Teen Pregnancy Rate](#)

[Regional Health Authority \(RHA\)](#)

[Regional Health Authority \(RHA\) District](#)

[Winnipeg Community Area \(CA\)](#)

[Neighbourhood Cluster \(NC\)](#)

[Socioeconomic Status \(SES\)](#)