

Manitoba Child Health Atlas 2004

July 2004



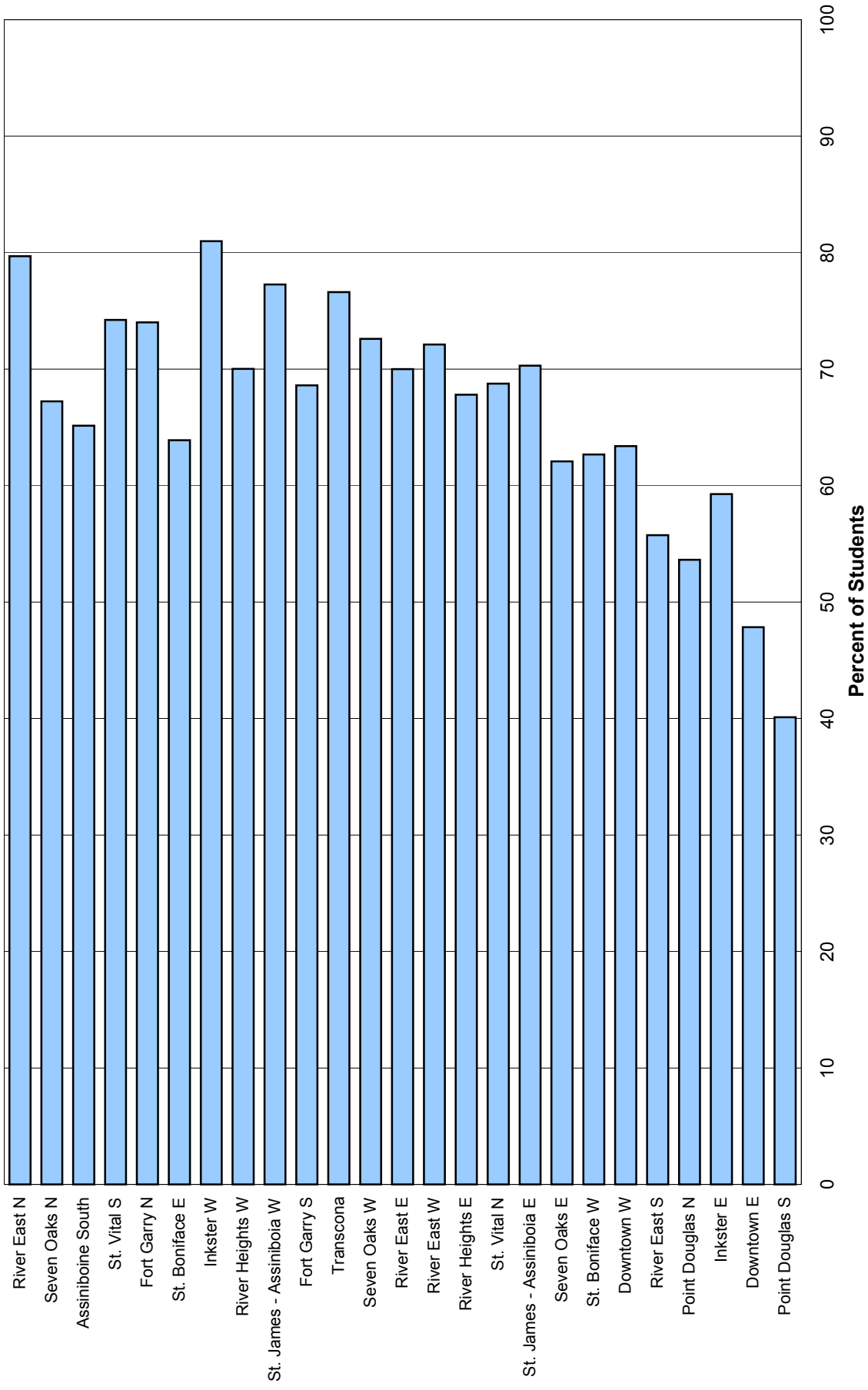
Manitoba Centre for Health Policy
Department of Community Health Sciences
Faculty of Medicine, University of Manitoba

The entire report is available on this WWW site:
http://www.umanitoba.ca/centres/mchp/reports/child_inequalities

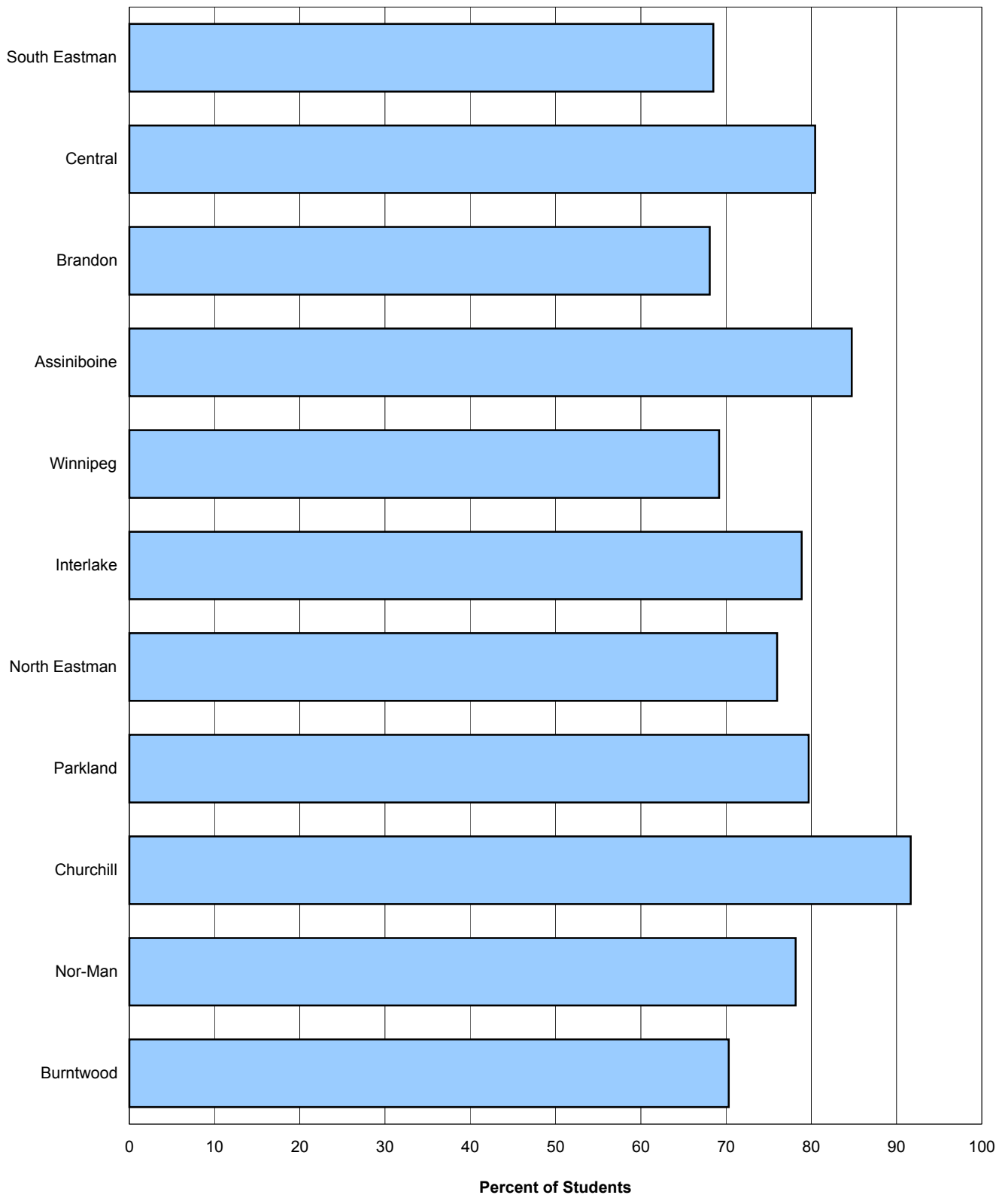
Education Indicators: School Changes by Region

How often do children in Manitoba change schools? To answer this question, we followed a cohort of students who enrolled in Grade 3 in 1997 and remained in Manitoba until 2002, and looked at how many schools the students had enrolled in over the six year time period. Expected school changes (for example, graduating grade 6 in one school and starting Grade 7 in another school) were not included as school changes. The first graph (Wpg NC Graph) shows the percentage of students in each of the 25 Winnipeg neighbourhoods who did not change schools during the six year time period. The percentages range from just over 40% in Point Douglas South to just less than 80% in River East North. The second graph (Mb RHA Graph) shows the percentage of students with no school changes in each area of Manitoba outside of Winnipeg. The percentages range from less than 70% to more than 90%, and show less of a trend with income than the percentages in Winnipeg. All graphs show the areas ordered by SES, with the most advantaged areas at the top of the graph and the least advantaged areas at the bottom of the graph.

**Percent of 1997 Grade 3 Students with No School Changes in Six Years
by Winnipeg NC, 1997/98 to 2002/03**



Percent of 1997 Grade 3 Students with No School Changes in Six Years
by Manitoba RHA, 1997/98 to 2002/03



These definitions can be found in the Child Health Atlas Glossary:
http://www.umanitoba.ca/centres/mchp/reports/child_inequalities/glossary.shtml

[School Changes](#)

[Regional Health Authority \(RHA\)](#)

[Neighbourhood Cluster \(NC\)](#)

[Socioeconomic Status \(SES\)](#)