

# Manitoba Child Health Atlas 2004

July 2004



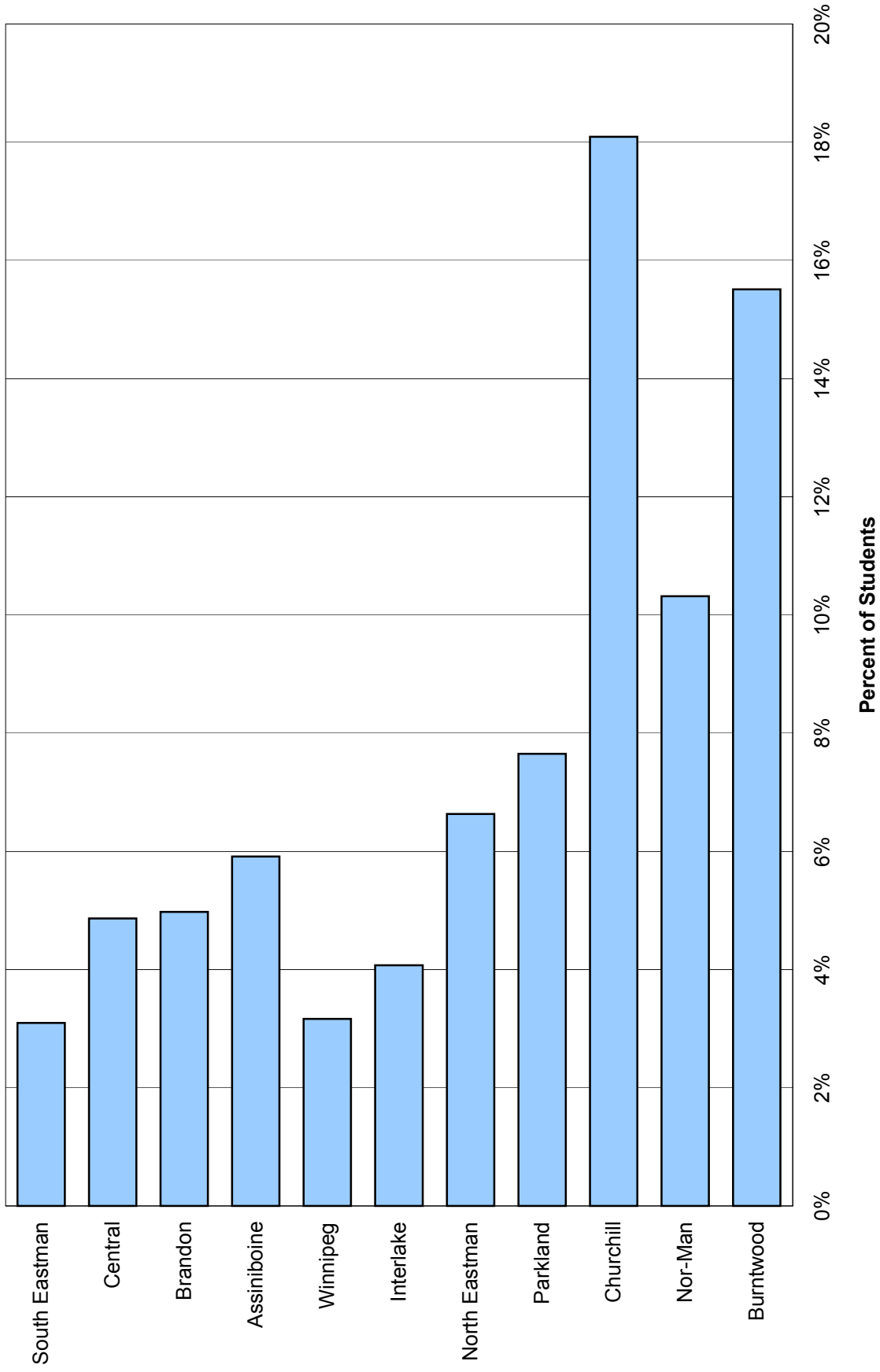
**Manitoba Centre for Health Policy**  
Department of Community Health Sciences  
Faculty of Medicine, University of Manitoba

The entire report is available on this WWW site:  
[http://www.umanitoba.ca/centres/mchp/reports/child\\_inequalities](http://www.umanitoba.ca/centres/mchp/reports/child_inequalities)

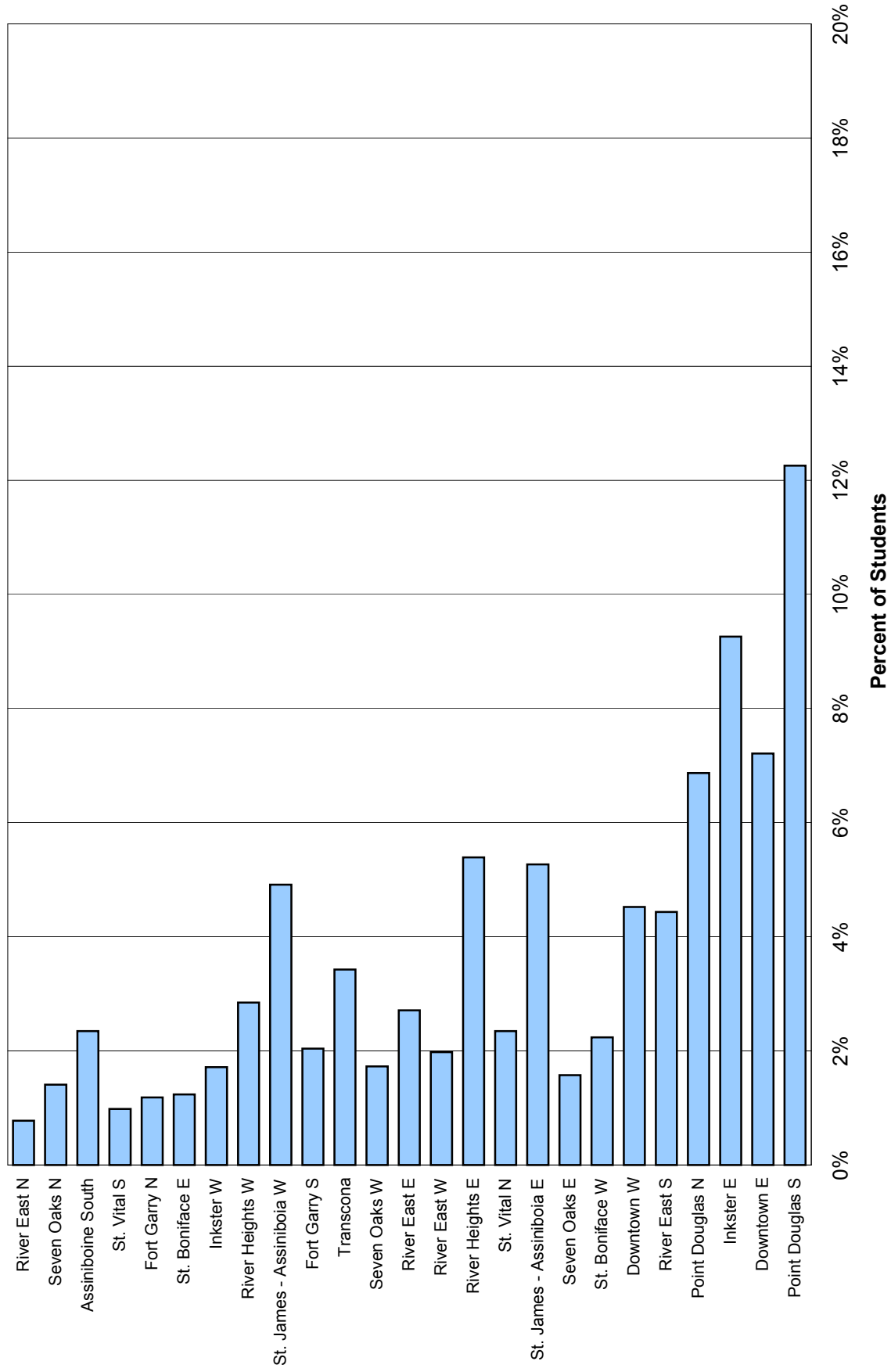
## Education Indicators: Retention Rates by Region

How many students are held back a grade in Manitoba? Research has shown that retention in grade fails to provide greater benefits to students with academic or adjustment difficulties than does promotion to the next grade (Jimerson, 2001), and it is also one of the most powerful predictors of high school dropout (Jimerson, Anderson, & Whipple, 2002); however, school divisions have different policies about whether or not to retain students. These graphs show the percentage of students in Kindergarten to Grade 8 who were retained at least once from 1997/98 to 2002/03. These graphs show that retention rates are higher for students living in more disadvantaged areas. Across the 25 Winnipeg neighbourhoods, retention rates ranged from less than 1% to over 12%, and in the Manitoba RHA's, retention rates ranged from just over 3% to more than 18%. Both graphs show the areas ordered by SES, with the most advantaged areas at the top of the graph and the least advantaged areas at the bottom of the graph.

**Rate of Students with One or More Repeats of a Grade from K to Grade 8  
by Manitoba RHA, 1997/98 to 2002/03**



**Rate of Students with One or More Repeats of a Grade from K to Grade 8  
by Winnipeg NC, 1997/98 to 2002/03**



These definitions can be found in the Child Health Atlas Glossary:  
[http://www.umanitoba.ca/centres/mchp/reports/child\\_inequalities/glossary.shtml](http://www.umanitoba.ca/centres/mchp/reports/child_inequalities/glossary.shtml)

[Retention](#)

[Retention Rates](#)

[Regional Health Authority \(RHA\)](#)

[Neighbourhood Cluster \(NC\)](#)

[Socioeconomic Status \(SES\)](#)