

Manitoba Child Health Atlas 2004

July 2004



Manitoba Centre for Health Policy
Department of Community Health Sciences
Faculty of Medicine, University of Manitoba

The entire report is available on this WWW site:
http://www.umanitoba.ca/centres/mchp/reports/child_inequalities

Education Indicators: Grade 3 Standards Tests by Manitoba RHA

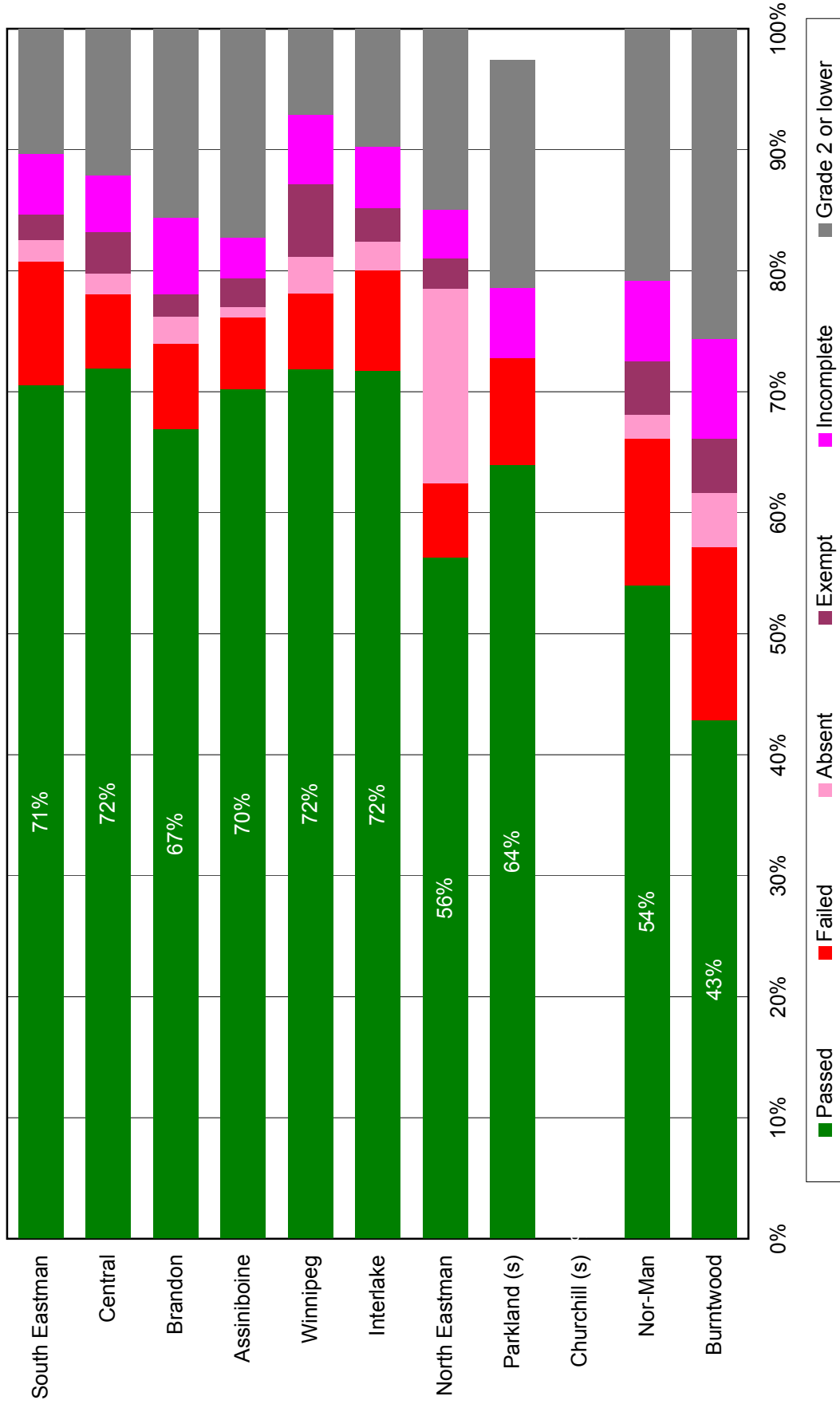
The first graph presented here (Graph - Left Side) reflects what the schools see when they review the performance of students taking the standards tests: the percent of students who passed the exam ranged from 91% to just under 76%. But this does not tell the whole story. To see the complete picture, we identified all children born in Manitoba in 1990, still living in Manitoba in the 1998/99 school year, who should have been writing the Grade 3 standards test that year. As can be seen in the second graph (Graph - Right Side), the percentage of students who passed the exam on schedule ranges from more than 70% to just above 43%. Compared with other neighbourhoods, more children from the Low SES areas failed the test, did not complete it, were exempt, or were absent on the day (or days) the test was written. Both graphs show the Manitoba areas ordered by SES, with the most advantaged areas at the top of the graph and the least advantaged areas at the bottom of the graph.

**Left Side of Graph: Grade 3 Language Arts Standards Test Performance by Manitoba RHA,
Pass/Fail of test writers, 1998/99**



's' indicates data suppressed due to small numbers

**Right Side of Graph: Grade 3 Language Arts Standards Test Performance by Manitoba RHA,
Eight year olds who should have written, 1998/99**



's' indicates some categories were suppressed due to small numbers

These definitions can be found in the Child Health Atlas Glossary:
http://www.umanitoba.ca/centres/mchp/reports/child_inequalities/glossary.shtml

[Standards Tests](#)

[Regional Health Authority \(RHA\)](#)

[Socioeconomic Status \(SES\)](#)