

Manitoba Child Health Atlas 2004

July 2004



Manitoba Centre for Health Policy
Department of Community Health Sciences
Faculty of Medicine, University of Manitoba

The entire report is available on this WWW site:
http://www.umanitoba.ca/centres/mchp/reports/child_inequalities

Education Indicators: S4 Standards Test by Manitoba RHA

The first graph presented here (Graph - Left Side) reflects what the schools see when they review the performance of students taking the standards tests: the percent of students who passed the exam ranged from almost 90% to just over 65%. But these numbers do not tell the whole story—they just report results for those who are in school, in Grade 12, and writing the standards tests. The larger question is: What happens when we focus on who should have been writing the standards test at that time? This very different story is told by the second graph (Graph - Right Side). To develop this graph we first identified all children who were born in Manitoba in 1984, and who remained in Manitoba until 2001/02 (84%), and who should have been writing the Grade 12 exam in the 2001/02 school year. The second graph shows this very different reality: the percent who passed now ranges from 60% to just above 20%. About 13% to almost 40% were behind at least one year (in Grade 11 (S3) or lower), and 10% to 27% had withdrawn from school (not enrolled in school for at least 2 years). Many of the students, especially those from less advantaged areas, had not yet made it to Grade 12, and many were not in school at all. Both graphs show the Manitoba areas ordered by SES, with the most advantaged areas at the top of the graph and the least advantaged areas at the bottom of the graph. Note that an estimated number of students expected to be enrolled in band-operated schools were removed from the analysis.¹

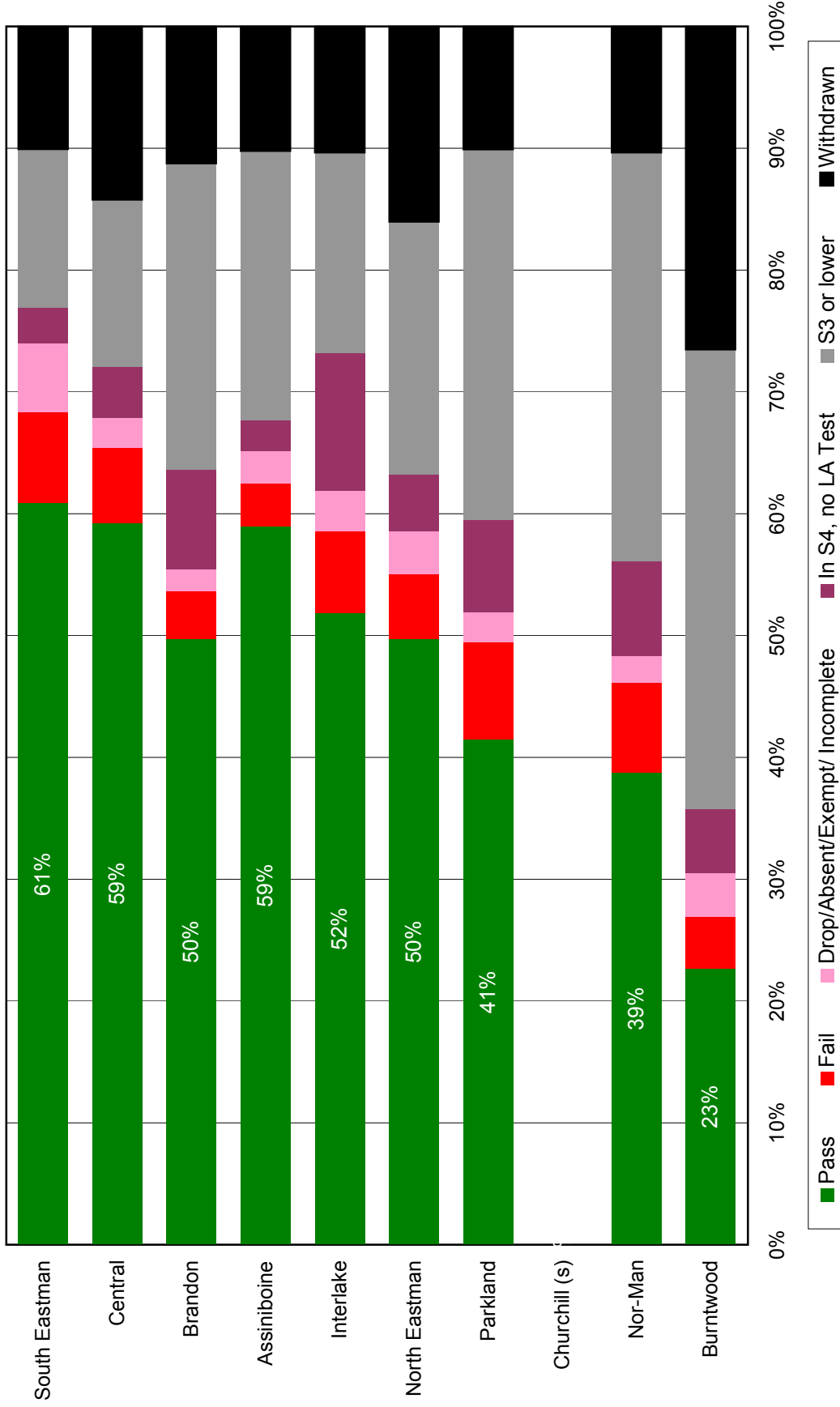
¹Some students in the 18 year cohort were enrolled in a band operated school in 2001/02. Enrollment data for band-operated schools is only partially reported to the provincial Education Information System (EIS). Students in band-operated schools and not in EIS enrollment data would be misclassified as withdrawn, so an estimated number of students expected to be enrolled in band-operated schools were removed from the analysis.

Left side of graph: Grade 12 (S4) Language Arts Standards Test Performance by Manitoba RHA, Pass/Fail rates of test writers, 2001/02



's' indicates data suppressed due to small numbers

Right side of graph: Grade 12 (S4) Language Arts Standards Test Performance, by Manitoba RHA, 18 year olds who should have written the test¹, 2001/02



¹s' indicates data suppressed due to small numbers

¹An estimated number of students expected to be enrolled in band-operated schools were removed from the total number of students in each SES group.

These definitions can be found in the Child Health Atlas Glossary:
http://www.umanitoba.ca/centres/mchp/reports/child_inequalities/glossary.shtml

[Standards Tests](#)

[Regional Health Authority \(RHA\)](#)

[Socioeconomic Status \(SES\)](#)