

MANITOBA CENTRE FOR HEALTH POLICY

Annual Report

2002/2003

July 2003

Department of Community Health Sciences
Faculty of Medicine, University of Manitoba

Prepared by Shannon Lussier

TABLE OF CONTENTS

DIRECTORS' LETTER.....	1
DELIVERABLES	2
Deliverables Completed	2
Deliverables In Progress	3
RESEARCH	6
Personnel Awards	6
Ongoing MCHP Research	6
Ongoing Associate Research	8
PUBLICATIONS.....	10
PRESENTATIONS.....	16
EDUCATION	22
Courses Taught in the Department of Community Health Sciences.....	22
Courses Taught in Other Departments	22
Other Teaching Activities.....	22
Graduate Student Supervision.....	23
MCHP COLLOQUIUMS IN THE DEPARTMENT OF COMMUNITY HEALTH SCIENCES.....	24
ADVISORY BOARD MEMBERS	25
FACULTY AND STAFF	27
ASSOCIATES.....	29
COMMITTEES	31
COMMUNICATION	34
KNOWLEDGE TRANSFER	34
Briefings.....	34
Communications	34
Media Interviews	34
Media Releases	35
Invited Consultations.....	36
RBC Financial Group Award for Research in Children's Health.....	36
Canadian Journal of Public Health Supplement	36
Healthcare Management Forum Supplement	36
MCHP CentrePiece Newsletter	37
Rural and Northern Health Care Days	37
WRHA/MCHP Health Care Day	37
The Need to Know Team Events	37
Training	38
Visitors.....	38
MCHP's Web site	39
Concept Dictionary.....	40
FINANCIAL INFORMATION.....	41



MISSION STATEMENT

The Manitoba Centre for Health Policy (MCHP) undertakes population-based health services research and policy analyses. MCHP relies upon the unique Population Health Research Data Repository to describe and explain patterns of care and profiles of health and illness. MCHP's mission is to provide accurate and timely information to health care decision-makers, analysts and providers, so they can offer services which are effective and efficient in maintaining and improving the health of Manitobans. The Centre is a research unit in the Department of Community Health Sciences, Faculty of Medicine, University of Manitoba.

DIRECTOR'S LETTER



The Annual Report is the time when I have the opportunity to highlight publicly the accomplishments of MCHP, its staff and associates, and to thank the many people who contribute to our success.

We are proud of Anita Kozyrskyj and Patricia

Martens who received New Investigator Awards from the Canadian Institutes of Health Research. They join two prior recipients, Marni Brownell and Verena Menec, bringing MCHP's total to four—a remarkable achievement for our small group. Evelyn Shapiro was recognized for a lifetime of work and service when she was awarded the Golden Jubilee Medal by the Governor General of Canada to celebrate the 50th anniversary of Her Majesty's accession to the throne. We congratulate three MCHP staff who completed graduate degrees: Natalia Dik received her Master of Science for her work on allergic rhinitis, Ruth-Ann Soodeen received her Master of Arts for her research on the meaning of home care to recipients and their spouses, and Carolyn De Coster received her PhD for her research on waiting times in cataract surgery.

Two commissions released reports in 2002 about the future of health care in Canada, and MCHP was able to influence both of them. I made a presentation to both the Standing Senate Committee on Social Affairs, Science and Technology, chaired by Senator Michael Kirby and to the Royal Commission on the Future of Health Care in Canada, led by Roy Romanow. In addition, Mr Romanow visited one of our Rural and Northern Health Care days where he spoke to and answered questions from the delegates. Furthermore, Anita Kozyrskyj analyzed pharmaceutical data to inform the catastrophic drug coverage recommendations, and papers by several MCHP authors were cited in Mr Romanow's final report.

MCHP's capabilities for research in children's health received a "shot in the arm" with the announcement of the RBC Clinical Child Health

Research Fellow award. This award is supported by a \$750,000 contribution over five years from RBC Financial Group. It came about through the University of Manitoba's Building on Strengths capital campaign. Beginning in July 2003, it will enable us to recruit visiting faculty, post-doctoral researchers or graduate students who have an interest in using the Repository for research into the determinants of children's health.

There are numerous people whom I wish to thank for their commitment and support; I apologize in advance for anybody that I might have overlooked:

- Members of our Advisory Board, especially our Chair, Brian Postl;
- Health Minister Dave Chomiak and Deputy Health Minister Milton Sussman, who maintain a strong interest in the policy implications of our work;
- Minister Drew Caldwell, Education, Training and Youth; Minister Diane McGifford, Advanced Education; Minister Tim Sale, Energy Science and Technology, formerly Minister of Family Services and Housing; Deputy Minister Ben Levin, Education; Deputy Minister Tannis Mindell, Family Services and Housing; and Deputy Minister John Clarkson, Energy Science and Technology, all of whom have encouraged and supported our research interests into the broader determinants of health;
- Dean of Medicine Brian Hennen and Department Head John O'Neil who have supported new initiatives undertaken by MCHP;
- Louis Barre, Chief Information Officer, Manitoba Health, our able and reliable liaison with Manitoba Health;
- numerous individuals who have provided input and feedback for our deliverables, especially those who have served on one of our Working Groups; and
- all the MCHP staff whose hard work and conscientious commitment is critical to the success of MCHP's activities.

Noralou P. Roos, PhD
Director and Professor

DELIVERABLES

Deliverables Completed

Estimating Personal Care Home Bed Requirements (Norman Frohlich, Carolyn De Coster and Natalia Dik)

As Manitoba's population ages, there is concern about how many nursing home beds we should have in the future. This study used historical data on nursing home use as well as population projections from the Manitoba Bureau of Statistics to develop estimates up to the year 2020. We estimated that Winnipeg would have a surplus of 500 nursing home beds in the year 2020. Regional estimates elsewhere in the province ranged between a deficit of 125 beds and a surplus of 150.

The Health and Health Care Use of Manitoba's Seniors: Have They Changed Over Time? (Verena Menec, Leonard MacWilliam, Ruth-Ann Soodeen and Lori Mitchell)

This study concluded that it is unlikely that the growing numbers of seniors will overwhelm the health care system. Since 1985, adults aged 65 or older have become healthier, and have experienced decreasing rates of hospitalization, physician visits and nursing home use. Even for those aged 85 or older, only about one-third lived in a nursing home. Nevertheless, seniors used the lion's share of hospital resources: in 1999, 38% of hospital inpatients were seniors, but they consumed two-thirds of the hospital days. Prescription use—and spending—increased dramatically. Rates of cancer and chronic illnesses also increased. The findings suggest there will be an increasing need for home care, supportive housing and other community-based resources to maintain seniors as long as possible at home.

Discharge Outcomes for Long-Stay Patients in Winnipeg Acute Care Hospitals (Anita Kozyrskyj, Charlyn Black, Elaine Dunn, Carmen Steinbach and Dan Chateau)

An earlier MCHP study found 5% of patients in Winnipeg hospitals use 40% of hospital days. This follow-up study asked which risk factors could predict which long-stay patients—those that stayed more than 30 days—were more likely to go home, to die, or to be discharged to another institution. Predictors of a non-home discharge were the previous use of home care, having a length of stay more than 90 days, and being a low-income senior. A cancer diagnosis was the strongest predictor of dying in hospital, while stroke and cognitive impairment both increased the chance of going to a nursing home. One year after a home discharge, approximately 40% of long-stay patients had remained at home, 34% were rehospitalized during the year, 8% had gone to a nursing home and 20% had died.

Why is the Health Status of Some Manitobans Not Improving? The Widening Gap in the Health Status of Manitobans (Marni Brownell, Lisa Lix, Okechukwu Ekuma, Shelley Derksen, Suzanne De Haney, Ruth Bond, Randy Fransoo, Leonard MacWilliam and Jennifer Bodnarchuk)

An earlier MCHP report found that the gap in health between the least and most healthy Manitobans was getting wider; this study investigates the reasons why. We explored changes in health over 15 years, comparing persons living in the areas with the most healthy, average health, and least healthy populations of either Winnipeg or the rest of Manitoba. In general, we found the widening gap in health was due to the most healthy getting healthier while the least healthy did not. This was not due to one or two specific diseases. Nor was it due to migration. However, changes in income and unemployment appeared to be associated with the widening gap.

The Manitoba RHA Indicators Atlas: Population-Based Comparisons of Health and Health Care Use (Patricia J Martens, Randy Fransoo, *The Need to Know* Team, Elaine Burland, Laurel Jebamani, Charles Burchill, Charlyn Black, Natalia Dik, Leonard MacWilliam, Shelley Derksen, Randy Walld, Carmen Steinbach, Matt Dahl and Bogdan Bogdanovic)

Our 1999 RHA health indicator report established a baseline; this report updates those indicators and adds several new ones, enabling RHA managers, planners and providers to track changes. Indicators are given for two time periods: the pre-RHA period between 1991 and 1996, and the RHA period

between 1997 and 2001. The report was the first of three deliverables to be produced by *The Need to Know* team, a CIHR-funded collaboration of MCHP, Manitoba Health and the non-Winnipeg Regional Health Authorities.

Supply, Availability and Use of Family Physicians in Winnipeg (Diane Watson, Bogdan Bogdanovic, Petra Heppner, Alan Katz, Robert Reid and Noralou Roos)

This project studied the changing patterns of use of urban primary care physicians over time. It examined how primary care practices have changed by looking at patient loads, average visit rates, patient characteristics, provision of care to patients in hospital settings, and other factors. It also examined how factors such as physician age, gender and scope of practice affect these patterns. A key finding is that workload patterns changed remarkably from 1991 to 2000, such that physicians who are now in their middle years have fewer patient visits compared to the same age group ten years ago, a trend that has implications for human resource planning.

Pharmaceuticals: Focussing on Appropriate Utilization (Colleen Metge, Anita Kozyrskyj, Matt Dahl, Marina Yogendran and Noralou Roos)

Analyses of trends over time reveal that pharmaceutical costs are rising very rapidly. To provide perspective to this issue, and to provide insight about potential strategies for influencing pharmaceutical use patterns, this project focussed on studying patterns of appropriate and inappropriate use of pharmaceutical agents. Using established guidelines, prescribing patterns were analyzed for appropriateness in the treatment of hypertension, in cholesterol reduction and following myocardial infarction.

Deliverables in Progress

Patterns of Health Care Use at the End of Life

Concerns about the 'high cost of dying' stem from the assumption that care to the terminally ill involves high technology and cure-oriented procedures in acute care settings. Several studies have investigated the patterns of health care use and costs before death, but their results are inconsistent. Many studies focus on one aspect of end-of-life care, for example hospital services, and miss other components, like home care. This project explores further what services are used before death, how they have changed over time, how they vary by age or region of residence, and what the cost implications are. We are incorporating not only use of hospitals, nursing homes and physicians before death, but also home care, pharmaceuticals, and special medical technologies such as MRI.

Radiologic Services Data: Incorporating these Data into a Population-Based Information System

The purpose of this project is to develop information capabilities to understand how radiology services are being delivered across the province. We are focussing on the use of ultrasound, bone densitometry, CT scan, and MRI. We compare how populations across the province use different types of radiologic tests, whether there are differences by age, gender and socioeconomic status, whether use has changed over time, and the impact of having clear protocols for use (e.g., bone densitometry).

Understanding the Potential of Introducing Reference-Based Pricing versus Utilization Management

Prescription drugs have been the fastest growing component of Canadian health expenditures for many years. Increases in costs are due to changes in both the price and mix of drugs prescribed. Newer medicines are typically far more expensive than older, off-patent medicines. Frequently the newer medicines provide benefits such as improved tolerability to only a select number of patients, yet tend to be prescribed broadly. Reference-based pricing is one method to control wide-spread prescribing practices; it restricts the prescribing of a particular product under the provincial drug plan to patients that have clinical reasons for using it. This project compares the cost implications of adopting reference-based

pricing versus aggressive drug use management techniques versus the status quo in managing one major class of drugs.

Using Administrative Data to Develop Indicators of Quality in Family Practice

This study is developing indicators of quality in family practice that are suitable for a quality improvement process, and measurable using administrative data available in the Population Health Research Data Repository. Potential indicators were identified by an initial review of literature and of accepted clinical practice guidelines. The proposed indicators were then reviewed by focus groups of family physicians (FPs) to assess their appropriateness and acceptability. A Quality Index is being created, summarizing FP performance over several indicators, and regression models developed to explain variation in the quality index between FPs. In future, it is hoped that these indicators may be used as part of a quality improvement program.

Patterns of Regional Mental Health Disorder Diagnoses and Service Use in Manitoba: A Population-Based Study

The goal of this project is to describe the use of mental health services by residents of rural and northern Manitoba RHAs. This has been identified as a high priority by the rural and northern RHAs, and by the Deputy Minister and Assistant Deputy Ministers at Manitoba Health. Rates of various mental illness diagnoses will be compared between regions, as well as use of health care services by persons with a mental health diagnoses. Comparisons between RHAs will be performed whenever possible, as well as analyses by gender, age categories and income level. This deliverable is the second of three committed to by Manitoba Health in support of the CIHR-funded *The Need to Know* project.

A Population-Based Description of High Cost and High Frequency Pharmaceutical Users in Manitoba

This deliverable will explore further a finding from a 2002 MCHP report that a minority of users account for a high proportion of total pharmaceutical costs, and that a very high proportion of these users were persistent high-cost users over time. It will look at, for example: Who are the high-cost and high-frequency pharmaceutical users in Manitoba (age, gender, location, demographics, types of illness, etc.)? Are these people using ambulatory care only, home care, hospitals, or are they PCH residents? What is the relationship between the highest-cost pharmaceutical users, and the drugs on which the province spends the most money?

Primary Prevention: An Examination of Data Capabilities in Manitoba

This project will explore data capabilities in the area of primary prevention. The objectives are to develop, in consultation with a working group and through a review of the literature, a list of surrogate measures (e.g., weight, height, HbA1c levels) and proximate factors (e.g., exercise activity, smoking) related to common chronic diseases, such as diabetes and heart disease, that will likely need to be tracked in the future as national prevention strategies are being implemented; to examine data capabilities to track these surrogates/proximate factors; to identify key information needs and gaps; and to recommend strategies for enhancing the availability of necessary data.

Profiling the Care Delivered by Primary Care Practices: A Baseline Measure

The focus of this research is on developing indicators appropriate for monitoring the delivery of primary care in the province, at the level of the primary care practice, not the individual patient. In other words, what is the overall pattern of care delivered to people by a particular group of general practitioners/family practitioners? Do the demonstration sites for primary care reform initiatives exhibit similar or different profiles than do non-demonstration site practices? Proposed indicators include the types of patients served, the volume of care delivered, continuity of care, and patterns of medication prescribing and diagnostic tests.

Patient Safety Issues: A Systems-Wide Approach for Manitoba

This project will frame quality of care, not as a medical error issue but as an issue of patient safety. Indicators of patient safety will be estimated for the province, as well as across hospitals and regions. Indicators of compromised patient safety will be developed, described, and compared across age groups, regions, hospitals in Winnipeg, while controlling for variables like case-mix. Examples of potential indicators are adverse events during hospitalization, in-hospital falls, adverse drug reactions, complications of medical care, 30-day post-surgical mortality, and hospital re-admissions within 30 days of discharge.

RESEARCH

Personnel Awards

Marni Brownell: CIHR New Investigator Award and Research Allowance, 2001 - 2006, \$385,485.

Anita Kozyrskyj: Canadian Institutes for Health Services Research New Investigator Award, 2003 - 2008, \$250,000.

Patricia Martens: Canadian Institutes for Health Services Research New Investigator Award, 2003 - 2008, \$250,000.

Verena Menec: CIHR New Investigator Award, 2001 - 2005, \$318,588.

Colleen Metge: Bristol-Myers Squibb Chair of the Evaluation of Drug Therapy Effectiveness, 1998 - 2003, \$250,000.

Sandra Peterson: CIHR, Doctoral Research Award, 2001 - 2004, \$58,590.

Noralou Roos: Canada Research Chair in Population Health, 2001 - 2007, \$1,225,000.

Ongoing MCHP Research

Canada Foundation for Innovation:

C Black, NP Roos. \$2,700,000, 1999 - 2003. "A Data Infrastructure for Improving Health and Human Capital."

NP Roos. \$250,000, 1/01 - 12/07. "Sustaining Canada's Lead in Health Information Infrastructure: Enhancing the Population Health Research Data Repository."

Canadian Institutes for Health Research:

LM Lix, G Deverteuil, LL Roos, R Robinson, JR Walker. \$216,506, 10/02 - 09/04 "Mental Health Service Utilization and Population Mobility in Manitoba: A Longitudinal Analysis."

LL Roos, RR Deber, EL Forget. \$182,594, 10/02 - 03/04. "Exploring Alternative Funding Models for Canadian Health Care."

V Menec. \$35,055, 2003. "Activity and Successful Aging Among the Oldest-Old: A Pilot Study."

V Menec. \$100,644, 2001 through 2002. "Continuity of Care: A Population Analysis of Prevalence and Correlates."

AL Kozyrskyj, AB Becker, P Ernst. \$219,050, 10/02 - 09/05. "Do Antibiotics in Early Life Contribute to the Development of Asthma in Children?"

Canadian Population Health Initiative:

LL Roos, NP Roos, AL Kozyrskyj, P Martens. \$675,200, 2/01 - 0/4. "Population and Communities: Understanding the Determinants of Health."

AL Kozyrskyj, T Klassen, B Law, G Mazowita. \$94,400, 07/01 - 12/02. "The Antibiotic Paradox: Identifying Communities at Risk."

M Brownell, NP Roos, D Watson and others. \$488,015, 07/03 - 06/06. "Inequalities in Child Health: Assessing the Roles of Family, Community, Education and Health Care."

Community Alliances for Health Research:

PJ Martens, C Black. \$2,257,396, 1/01 - 3/06. "The Need to Know: Collaborative Research by the CAHR, MCHP, Rural and Northern Regional Health."

Health Canada:

LL Roos, P Jacobs. \$100,000, 04/02 - 02/03. "Building Working Knowledge: Exchanging Web-based Concepts and Tools."

Health Policy Research Program: Metge C, Kozyrskyj AL and others. \$240,000, 08/02 - 07/04. "Evaluation of an Integrated Model and Iterative Loop Assessment of Drug Effectiveness in the Real World."

Manitoba Health:

C Black, NP Roos. \$9,250,000, 04/03 - 3/07. Manitoba Centre for Health Policy Agreement.

Manitoba Health Research Council:

PJ Martens. \$46,900, 07/00 - 07/02. "Evaluating the Effectiveness of Breastfeeding Promotion Strategies in Rural Manitoba – A First Nations Community and a Rural Health Authority."

PJ Martens. \$45,315, 09/02 - 08/03. "The Sagkeeng First Nation Follow-up Study #2. The Effect of prenatal interventions on breastfeeding initiation and duration."

Pharmacia Canada:

AL Kozyrskyj, D Collins, B Kvern. \$368,825, 07/01 - 06/03. "Newly-Approved Provincial Formulary Drugs: A Model to Assess Their Utilization."

Social Sciences and Humanities Research Council of Canada:

B Havens, C Black, V Menec, NP Roos, J Chipperfield. \$357,000, 2000 - 2002, "Determinants of Persistent Good Health and Chronic Ill-Health Based on the Aging in Manitoba Study Cohort."

N Frohlich. \$47,025, 2002 through 2004. "A Cognitive Model to Deal with Problems in Political and Economic Choice."

South Eastman Regional Health Authority through Health Canada Rural and Remote Initiatives:

PJ Martens. \$9,000, 04/01 - 08/03 for an evaluation of the project "Evaluating the Effectiveness of South Eastman's Baby-Friendly Initiative Process."

Thorlakson Foundation:

J Sareen, V Menec. \$7,000, 2001 through 2002. "Self-reported Barriers Towards Treatment of Psychiatric Disorders: Proposed Investigation of a Canadian Sample."

Winnipeg Inner-City Research Alliance:

LL Roos, KL Frohlich, D Pachal, S Forsyth. \$57,719, 2001 through 2004. "Winnipeg Quality of Life."

Ongoing Associate Research Utilizing the Population Health Research Data Repository

Note: These projects are not run (financially or administratively) through MCHP, and may access more than one data source.

Assembly of Manitoba Chiefs:

J O'Neil. \$371, 309, 11/99 - 11/06. "Manitoba First Nations Longitudinal Health Survey: Data Linkage Study."

Canadian Institutes for Health Research:

J O'Neil. \$131,760, 4/02 - 4/05. "Manitoba First Nations Regional Longitudinal Health Study."

S Bruce, V Menec. \$140,000, 2002 through 2004. "The Relation Between Stress and Diabetes in a First Nations Community."

K Hayglass, AL Kozyskyj. \$1,500,000, 06/02 - 05/08. "Allergy and Asthma: From Molecular Regulation to Population Health."

J Uhanova. \$211,732, 03/01 - 03/04. "Application of the Health Care System to First Nations vs Non-First Nations Patients with Chronic Hepatitis C Viral Infections and HCV Costing Study."

A Becker, A Kozyskyj. \$1,250,000, 03/02 - 03/07. "Origins of Asthma in Childhood: The Role of Gene: Environment Interaction."

with Canadian Health Services Research Foundation: E Forget. \$30,000, 01/01 - 01/03, "A Multi-level Test of the Relative Income Hypothesis."

Canadian Population Health Initiative:

J Berthelot. \$960,000, 01/02 - 01/05. "Canadian Burden of Disease, Injury and Risk Factors."

Health Canada:

B Havens. \$283,509, 10/00 - 12/04. "Aging in Manitoba, Thirty Years Later."

Manitoba Health:

Havens B. \$131,800, 10/00 - 10/04. "Aging in Manitoba, Thirty Years Later."

F Beaudoin, V Menec. \$160,000, 2002. "WHO Mental Disorders in Primary Care, Manitoba Project."

Manitoba Health Research Council:

C Metge. \$88,000, 06/00 - 06/03. "Evaluating Drug Therapy Effectiveness in the Population of Manitoba."

Manitoba Medical Services Foundation:

K Stannard, AN Prasad, A Kozyskyj. \$27,000, 01/03 - 12/03. "Health Care Utilization in Manitoba Children With Seizures: A Population-Based Longitudinal Study Using a Birth Related Cohort."

Medical Research Council of Canada:

J O'Neil, NP Roos. \$131,760, 1999 through 2002. "Manitoba First Nations Longitudinal Health Survey."

Merck Frosst Canada:

M Doupe. \$350,000, 10/00 - 10/03. "The Manitoba Appropriate Anti-Inflammatory Utilization Project."

Merck Frosst Canada:

C Metge. \$1,000,000, 11/00 - 11/04. "Maximizing Osteoporosis Management in Manitoba."

National Institute of Health:

M Kryger, LL Roos. \$88,428, 2001 through 2002, "Impact of Sleep Disorders on Health."

PUBLICATIONS

2003

Bernstein CN, Blanchard JF, Metge CJ, Yogendran J. The association between corticosteroid use and development of fractures among IBD patients in a population-based database. *Am J Gastroenterology*; In press.

Bernstein CN, Blanchard JF, Metge CJ, Yogendran M. Does the use of 5-aminosalicylates in inflammatory bowel disease prevent the development of colorectal cancer? *Gastroenterology*; In press.

Black C, Roos L. Linking, combining, and disseminating data for understanding population health. Hunter E, Gibson R, Friedman D (eds): *Health Statistics in the 21st Century: Implications for Health Policy and Practice*. Oxford, UK: Oxford University Press; In press.

Curtis LJ, Kozyrskyj AL. *From research to policy (or not): The case of "child policy" in Canada, the US and Norway*. In: Evans, RG, Hertzman C, Barer ML, Baird P, editors. Canadian Institute for Advanced Research; In press.

De Coster C, Cataract surgery waiting times in Manitoba. *Can J Aging* (Suppl); In press.

De Coster C, Bruce S, Kozyrskyj A. Use of acute care hospitals by long-stay patients: who, how much and why? *Can J Aging* (Suppl); In press.

De Coster C, Frohlich N, Dik N. Estimating personal care home bed requirements to 2020 in Manitoba. *Can J Aging* (Suppl); In press.

Finlayson M, Lix LM, Finlayson G, Fong T. Trends in the utilization of specific health care services among older Manitobans: 1985 to 2000. *Can J Pub Health*; In press.

Frohlich N, Oppenheimer J, Kurki A. Beyond a theory of self-interest: Modeling other-regarding preferences. *Public Choice*; In press.

Frohlich N, Oppenheimer J. Optimal policies and socially oriented behavior: Some problematic effects of an incentive compatible device. *Public Choice*; In press.

Gupta S, Roos LL, Walld R, Traverse D, Dahl M: Delivering equitable care: Comparing preventive services in Manitoba, Canada. *Am J Public Health*; In press.

Huzel L, Roos LL, Anthonisen NR, Manfreda J. Diagnosing asthma: The fit between survey and administrative database. *Can Respir J* 2003-05-09;9(6):407-412.

Keselman HJ, Wilcox RR, Lix LM. A generally robust approach to hypothesis testing in independent and correlated groups designs. *Psychophysiology*; 2003; In press.

Kozyrskyj AL. Romanow on pharmaceuticals: A strong case for access to quality medication therapy (editorial). *Can J Aging* 2003;22:25-28.

Kozyrskyj AL, Mustard CA, Becker AB. Identifying children with persistent asthma from health care administrative records. *Can Respir J*; In press.

Kozyrskyj AL, Mustard CA, Becker AB. Wheezing syndromes in childhood and health care data. *Ped Pulmonol* 2003;36:1-6.

Kozyrskyj AL, Mustard CA, Simons FER. Inhaled corticosteroids in children and household income. *Ped Pulmonol*; In press.

Kraut A, Walld R. Influence of lack of full time employment on attempted suicide in Manitoba. *Scand J Work Environ Health* 2003;29(1):15-21.

Lix LM, Algina J, Keselman HJ. Analyzing multivariate repeated measures designs: A comparison of two approximate degrees of freedom procedures. *Multivariate Behavioural Research*; In press.

Livingstone T, Lix LM, McNutt M, Morris E, Osei W, Rosenbluth D, Scott D, Watson F. An investigation of the impact of supplementary health benefits for low income families in Saskatchewan. *Can J Pub Health*; In press.

Menec VH. The relation between everyday activities and successful aging: A 6-year longitudinal study. *J Gerontol B Psychol Sci Soc Sci* 2003;58(2):S74-S82.

Menec VH, Bruce S, MacWilliam L. Of bed crises and bed blockers: Exploring reasons for bed pressures in Winnipeg acute care hospitals. *Can J Aging* (Suppl); In press.

Menec V, Black C, MacWilliam L, Aoki F. The impact of influenza-associated illnesses on hospitalizations, physician visits, emergency room visits and mortality. *Can J Public Health* 2003;94(1):59-63.

Menec VH, Lix L, MacWilliam L, Soodeen RA. Trends in the health status of older Manitobans, 1985 to 1999. *Can J Aging* (Suppl); In press.

Roos LL, Menec V, Currie RJ. Policy analysis in an information-rich environment. *Soc Sci Med* 2003; In press.

Roos LL, Soodeen RA, Bond R., Burchill C: Working More Productively: Tools for Administrative Data. *Health Serv Res*; In press.

Roos NP, Burchill C, Carriere KC. Who are the high hospital users? A Canadian case study. *J Health Serv Res Pol* 2003;8(1):5-10.

Shapiro E. The Romanow Commission report on home care (editorial). Perspectives on the Romanow Commission. *Can J Aging* 2003;22(1):13-17.

2002

Brownell M. Tonsillectomy rates for Manitoba children: Temporal and spatial variations. *Healthcare Manage Forum* 2002;Winter (Suppl):21-26.

Brownell M, Craven K. Improving children's health: How population-based research can inform policy - The Manitoba experience. *Can J Public Health* 2002;93(Suppl 2):S1-S80.

Brownell MD, Friesen D, Mayer T. Childhood injury rates in Manitoba: Socioeconomic influences. *Can J Public Health* 2002;93(Suppl. 2): S50-S56.

Brownell M, Kozyrskyj AL, Roos NP, Friesen D, Mayer T, Sullivan K: Health service utilization by Manitoba children. *Can J Public Health* 2002;93(Suppl 2):S57-S62.

Brownell M, Mayer T, Martens P, Kozyrskyj AL, Fergusson P, Bodnarchuk J. Using a population-based health information system to study child health. *Can J Public Health* 2002;93(Suppl 2):S9-S14.

Bruce S, DeCoster C, Trumble Waddell J, Burchill C. Patients hospitalized for medical conditions in Winnipeg, Canada: Appropriateness and level of care. *Healthcare Manage Forum* 2002;Winter (Suppl):53-57.

Deber, RB, Forget, EL, Roos LL, Shortt, S. Medical savings accounts: An idea that just won't die. *Globe and Mail* July 26, 2002, A15.

DeCoster C. Measuring and managing waiting times: What's to be done? *Healthcare Manage Forum* 2002;15(2):6-10. French translation: Mesurer et gérer les délais d'attente: que peut-on faire? p.46-50.

Einarson T, Metge C, Iskedjian M, Mukherjee J. Impact of CYP-450 drug interactions on healthcare utilization with HMG-CoA reductase inhibitors: A Canadian population-based study. *Clin Pharm Ther*, 2002;24(12):2126-2136.

Finlayson G, Watson D, Jacobs P. The relative cost of inpatient care in Manitoba's largest hospitals. *Healthcare Manage Forum* 2002;Winter (Suppl):47-52.

Forget EL, Deber R, Roos LL. Medical Savings Accounts: Will they reduce costs? *CMAJ* 2002;167(2):143-147.

Forget EL, Deber RB, Roos LL. Medical savings accounts, Let's not add to the costs of health care. Re: Squaring the circle on health care, by John Robson (31 July 2002). *Ottawa Citizen* August 7, 2002 ed.

Frohlich N, Fransoo R, Roos NP. Health service use in the Winnipeg Regional Health Authority: Variations across areas in relation to health and socioeconomic status. *Healthcare Manage Forum* 2002; Winter(Suppl):9-14.

Frohlich N. An impartial reasoning solution to the prisoner's dilemma: Rejoinder to a comment by Oded Stark. *Public Choice* 2002;113:241-243.

Frohlich N, Roos NP. Searching for El Dorado: The impossibility of finding the right rate. *CMAJ* 2002;167(8):880-881.

Frohlich N, Oppenheimer J. Empirical approaches to normative theory. *The Good Society* 2002;1(2):27-32.

Grymonpre RE, Charles JM, Metge C, Vercainge LM. The development of a remuneration scheme for community-based geriatric pharmaceutical care. *J Res Pharm Econ* 2002;11(1):51-61.

Huzel L, Roos LL, Anthonisen N, Manfreda J: Diagnosing asthma: The fit between survey and administrative databases. *Can Resp J*, 2002;9(6):407-412.

Jacobs P, Finlayson G, Faienza B, Brown M, Newson B, MacLean N. The development of a tool to assess the quality of cost estimates. *Dis Manage Health Outcomes*. 2002;10(2):127-132.

Kaul PR, Saunders LD, Roos LL, Kephart G, Ghali WA, Walld R, Warren J. Trends in utilization of Coronary Artery Bypass Surgery and associated outcomes: Alberta, Manitoba and Nova Scotia. *Am J Med Qual* 2002;17(3):103-112.

Kaul P, Saunders L, Roos L, Kephart G, Ghali W, Walld R, Warren J: Trends in utilization of CABG and associated outcomes: Alberta, Manitoba and Nova Scotia. *Am J Med Qual*; 2002;17(3)103-112.

Kozyrskyj A. Prescription medications in Manitoba children: Are there regional differences. *Can J Public Health* 2002;93(Suppl 2):S63-S69.

Kozyrskyj A, DeCoster C, St John P. Long stay patients in Winnipeg acute care hospitals. *Healthcare Manage Forum* 2002;Winter (Suppl):15-20.

Kozyrskyj A, Fergusson P, Bodnarchuk J, Brownell M. Community resources and determinants of the future health of Manitobans. *Can J Public Health* 2002;93(Suppl 2):S70-S76.

Kozyrskyj A, Hildes-Ripstein GE. Assessing health status in Manitoba children: Acute and chronic conditions. *Can J Public Health* 2002;93(Suppl 2):S44-S49.

Kozyrskyj A, Mustard C, Simons F: Development of a drug treatment-based severity measure in childhood asthma. *J Asthma*; 2002;5:421-428.

Kryger MH, Walld R, Manfreda J. Diagnoses received by narcolepsy patients in the year prior to diagnosis by a sleep specialist. *Sleep* 2002;25(1):36-41.

Leslie WD, Metge CJ, Salamon EA, Yuen CK. Bone mineral density testing in health postmenopausal women: The role of clinical risk factor assessment in determining fracture risk. *J Clinical Densitometry* 2002; May.

Lix L. Monitoring the acute care sector: assessing key measures and trends. *Healthcare Manage Forum* 2002;Winter (Suppl):4.

Lix LM, Newburn-Cook C, Roos NP, Derksen S. Trends in health and health care utilization in Manitoba. *Healthcare Manage Forum* 2002; Winter (Suppl):35-38.

MacDonald J, Katz A. Physicians perceptions of nurse practitioners. *Can Nurse* 2002;98(7):28-31.

Martens P. Will your breastfeeding intervention make a difference? What the lactation consultant needs to know about program evaluation. *J Hum Lact* 2002;18(4):379-381.

Martens PJ. Increasing breastfeeding initiation and duration at a community level: An evaluation of Sagkeeng First Nation's community health nurse and peer counsellor programs. *J Hum Lact*; 2002;18(3):236-246.

Martens PJ. First, do no harm: Evaluating research for clinical practice. *Curr Iss Clin Lact* 2002:37-47.

Martens P, Brownell M, Kozyrskyj A. The virtual classroom: A summary of child health indicators. *Can J Public Health* 2002;93(Suppl 2):S77-S80.

Martens P, Derksen S. A matter of life and death for Manitoba's children: An overview of birth rates and mortality rates. *Can J Public Health* 2002;93(Suppl 2):S21-S26.

Martens P, Derksen S, Mayer T, Walld R. Being born in Manitoba: A look at perinatal health issues. *Can J Public Health* 2002;93(Suppl 2):S33-S38.

Martens P, Frohlich N, Brownell M, Carriere KC, Derksen S, MacWilliam L, Mayer T. Embedding child health within a framework of regional health: Population health status and sociodemographic indicators. *Can J Public Health* 2002;93(Suppl 2):S15-S20.

Martens P, Mayer T, Derksen S. Factors affecting adolescent reproductive health in Manitoba. *Can J Public Health* 2002;93(Suppl 2):S39-S43.

Martens P, Romphf L, Peddelsden J. A call for evidence in alternative feeding methods. *J Hum Lact* 2002;18(4):333.

Martens P, Stewart D, Mitchell L, Black C. Assessing the performance of rural hospitals. *Healthcare Manage Forum* 2002;Winter (Suppl):27-34.

Menec VH, MacWilliam L, Aoki F. Hospitalizations and deaths due to respiratory conditions during influenza seasons: A comparison of community residents, senior housing residents, and nursing home residents. *J Gerontol: Med Sci* 2002;57A:M1-M7.

Menec VH, Roos NP, MacWilliam L. Seasonal patterns of hospital use in Winnipeg: Implications for managing winter bed crises. *Healthcare Manage Forum* 2002; Winter(Suppl):58-64.

Metge CJ, Vercaigne L, Carrie A, Sarveiya V, Zhanel GG. The new fluoroquinolones in community-acquired pneumonia: Clinical and economic perspectives. Ottawa: Canadian Coordinating Office for Health Technology Assessment; 2002.

Murray RP, Connert JE, Tyas SL, Bond R, Ekuma O, Silversides CK, Barnes GE. Alcohol volume, drinking pattern and cardiovascular morbidity and mortality: Is there a U-shaped function? *Am J Epidemiol* 2002;155(3):242-248.

Otake K, Delaive K, Walld R, Manfreda J, Kryger M. Cardiovascular medication use in undiagnosed obstructive sleep apnea patients. *Thorax*; 2002;57(5):417-422.

Reid RJ, Roos N, MacWilliam L, Frohlich N, Black C. Assessing population need using a claims-based ACG morbidity measure: A validation analysis in the province of Manitoba. *Health Serv Res*; 2002; 37(5):1345-1364.

Roberts J, Fransoo R, Black C, Roos L, Martens P. Research meets reality: Administrative data to guide planning for Canadian Regional Health Authorities. *Healthcare Manage Forum*; 2002;15(4):13-21.

Roos L, Walld R, Soodeen R, Roos N. Health reform and technological change in Manitoba: Treatment of acute myocardial infarction. McClellan M, Kessler D (eds): *A Global Analysis of Technological Change in Health Care: Heart Attacks*. Ann Arbor, MI: University of Michigan Press; pp. 106-120; 2002.

Shapiro E. Sharing the learning: The Health Transition Fund. Synthesis Series, Home Care, Health Canada, Minister of Public Works and Government Services Canada; 2002.

Smith R, Ronald J, Delaive K, Walld R, Manfreda J, Kryger MH. What are obstructive sleep apnea patients being treated for prior to this diagnosis? *Chest* 2002;121(1):164-172.

Tudiver F, Guibert R, Haggerty J, Ciampi A, Medved W, Brown Belle J, Herbert C, Katz A, Ritvo P, Grant B, Goel V, Smith P, O'Beirne M, Williams J, Moliner P. What influences family physicians cancer screening decisions when practice guidelines are unclear or conflicting? *J Fam Pract* 2002; 51(9):760-767.

Watson D, Finlayson G, Jacobs P. Comparing apples to apples: The relative performance of Manitoba's acute care hospitals. *Healthcare Manage Forum* 2002; Winter (Suppl):39-46.

Young TK, Martens P, Taback SP, Sellers EA, Dean H, Cheang M, Flett B. Type 2 diabetes mellitus in children: Prenatal and early infancy risk factors among native Canadians. *Arch Ped Adolesc Med* 2002;156(7):651-655.

PRESENTATIONS

2003

Brownell M. Inequalities in child health: Assessing the roles of family, community, education and health care. The Canadian Population Health Initiative Regional Workshop, Saskatoon SK, March.

Buchan S, Burland B, Martens PJ, Black C. The Need to Know: Collaborative Research by the Manitoba Centre for Health Policy, the Rural and Northern Health Authorities and Manitoba Health. The Canadian Centre for Analysis of Regionalization and Health's "2nd Annual Conference on Health Care Regionalization in Canada", Montreal, QC March.

Chateau D. Population and communities: Characterizing neighbourhood attributes and deprivation. The Canadian Population Health Initiative Regional Workshop on The Determinant of Healthy Communities, Saskatoon SK, March.

DeCoster C, West L. Committed to improving our health care: Findings and issues stemming from the Romanow Commission and the Kirby Senate Committee. The College of Registered Nurses of Manitoba, Winnipeg MB, March.

Katz A. Money in your bank, data in ours. Continuing Medical Education for family physicians. University of Manitoba, Winnipeg MB, February.

Martens PJ. Breastfeeding Research: A decade of "made-in-Manitoba" findings. The Manitoba Baby Friendly Initiative Provincial Committee. Tele-Health session for the province of Manitoba's health care providers, Winnipeg MB, March.

Martens PJ. Research and breastfeeding. The Winnipeg Regional Health Authority. Training day for health care workers, Winnipeg MB, March.

Martens PJ. Building a Sustainable Public Health Research Infrastructure in Canada. Invited guest to the CIHR-IPPH Meeting, Toronto ON, March.

Martens PJ. Coming full circle in primary prevention: Diabetes and breastfeeding. The 8th Annual Breastfeeding Education Day, New Westminster BC, February.

Martens PJ. The First Nation's Report: A discussion of the implications for the people of the Churchill Regional Health Authority. The Churchill Regional Health Authority Board of Director's meeting, Churchill MB, February.

Martens PJ. The health and health care use of First Nations Manitobans. The Deputy Minister of Health's First Nation Technical Working Group, Winnipeg MB, February.

Martens PJ, Katz A. Your billing claims: Money in your bank, research data in ours. The Continuing Medical Education for Family Physicians, Winnipeg MB, February.

Martens PJ. Coming full circle in primary prevention: Diabetes and breastfeeding. 8th Annual Breastfeeding Education Day. New Westminster BC, February.

Martens PJ. Coming full circle in primary prevention: Diabetes and breastfeeding. The First Nations and Inuit Health Branch Nurse-in-Charge/Physicians Conference, Winnipeg MB, January.

Martens PJ. Survey Research - ask a silly question? The Agriculture CapStone Course, University of Manitoba, Winnipeg MB, January.

Martens PJ. Coming full circle in primary prevention: Diabetes and breastfeeding. Saginaw Chippewa Tribal Council Sessions. Mount Pleasant Michigan, January.

Roos LL. Concept Dictionary lab session. The Socio-Economic Dimensions of Housing and Health Workshop, Winnipeg, MB, January.

Roos NP. An overview of the Manitoba Centre for Health Policy. Presented to representatives from the University of Calgary and Calgary Health Region, Winnipeg MB, February.

Soodeen R. Concept Dictionary lab session. Presented to the representatives from the University of Calgary and Calgary Health Region, Winnipeg MB, February.

2002

Bodnarchuk J, Forsyth S. A community program database: Benefiting community youth and advancing research. The National Conference on Child and Youth Friendly Communities, Vancouver BC, May.

Bowen S, Martens PJ. The Need to Know Team – evaluation report. RHA/CEO Network. Winnipeg MB, September.

Brownell MD, Lix LM, Ekuma O, Derksen S, DeHaney S, Bond R, Fransoo R, MacWilliam L, Bodnarchuk J. Why is the health of some Manitobans not improving? Social Determinants of Health Across the Lifespan Conference, Toronto ON, December.

Burchill C. Reflections on working with administrative data. The Canadian Health Services & Policy Research, University of British Columbia Vancouver BC, June.

Burchill C. The health and health care use of registered First Nations people living in Manitoba: A population-based study - SVS linkage process. Health Canada, First Nations Inuit Health Branch, Indian and Northern Affairs Canada, Ottawa ON, April.

Burland B, Martens P, Black C. The Need to Know: Collaborative research by the Manitoba Centre for Health Policy, the Rural and Northern Health Authorities and Manitoba Health (Presented at the Health Research in Rural and Remote Canada - Meeting Challenges, Creating Opportunities, Halifax NS, October.

Caetano P, Metge C, Leslie W. Population-based analysis of osteoporosis treatment and prevention using a combination of administrative databases, a clinical bone mineral density database and survey data [poster presentation], International Osteoporosis Foundation Meeting, Lisbon Portugal, May.

Doupe M, Katz A, Morrison L, Kvern B, Metge C, Thomson G. The Manitoba anti-inflammatory appropriate utilization initiative (MAAUI): Methodology to implement and test drug appropriateness interventions. The Canadian Association for Population Therapeutics Annual Conference, Toronto ON, April.

Fransoo R, Martens P. Which indicators and which borders? Population-based information for Manitoba's Regional Health Authorities. The Health Research in Rural and Remote Canada - Meeting Challenges, Creating Opportunities, Halifax NS, October.

Jacobs P, Finlayson G, Rapoport J. Harmonization of hospital costs. Poster session of the Pharmacoeconomics and Outcomes Research, 5th Annual European Congress, Rotterdam Netherlands, November.

Jacobs P, Finlayson G. Consensus group forms a national list of standard costs for Canada. Poster session, 18th Annual Meeting of the International Society of Technology Assessment in Health Care, Berlin Germany, June.

Katz A. A ten year perspective on the supply and use of family doctors in Winnipeg. North American Primary Research Group 30th Annual Meeting, New Orleans, November.

Katz A. Role of the Physician in teaching breast self examination. Breast Cancer Information and Support Network, Winnipeg MB, October.

Kozyrskyj A. Overview of the allergy and asthma epidemic. The Canadian Society of Allergy & Clinical Immunology Annual Meeting, Quebec City QC, November.

Kozyrskyj A, Law B, Becker AB. Antibiotic treatment of asthma exacerbations in children: What is the practice? The Canadian Society of Allergy & Clinical Immunology Annual Meeting, Quebec City QC, November.

Kozyrskyj AL, Morgan S, Dahl M. Prescription Costs for Manitobans; Analysis for the Romanow Commission. Manitoba Centre for Health Policy, Winnipeg MB, August.

Kozyrskyj A. Antibiotics, children and havens. The Pediatric Research Rounds, Department of Pediatrics and Child Health, Winnipeg MB, May.

Kozyrskyj A. Evidence from the Cochrane collaboration: How & what to tell patients. The Canadian Pharmaceutical Association Annual Meeting, Winnipeg MB, May.

Kozyrskyj A. Research databases. The Aventis Teachers of Pharmacy Administration Conference, Montreal QC, May

Livingstone T, Lix L, McNutt M, Morris E, Osei W, Rosenbluth D, Scott D, Watson F. Economic benefits of the Family Health Benefits program for rural children and families. The US Rural Health Conference, University of Alabama, April.

Lix L. Models here, models there: A comparison of approaches for the analysis of longitudinal data. The Department of Psychology Colloquium Series, University of Manitoba, Winnipeg MB, October.

Lix L. Models for health services research: Examining the impact of time and space. Department of Statistics, University of Manitoba, Winnipeg MB, July.

Lix LM, Brownell M, Ekuma O, Derksen S, Dehaney S, Bond R, Fransoo R, MacWilliam, L, Bodnarchuk J. A longitudinal analysis of regional disparities in health status in Manitoba, Canada. The 2nd annual conference of the International Society for Equity in Health, Toronto, June.

Martens PJ. The Romanow Report: What does it mean to medical education? Is it the cat's meow? The Grand Rounds for Family Practice, Winnipeg MB, December.

Martens PJ. Coming full circle In primary prevention - diabetes and breastfeeding. The First Nations and Inuit Health Branch Diabetes Conference, Winnipeg MB, November.

Martens PJ. The First Nations report: A discussion of the implications for the people of the Assiniboine Regional Health Authority. The Assiniboine and Brandon Regional Health Authorities, Souris MB, November.

Martens PJ. The health and health care use of Registered First Nations people living in Manitoba. The Board of Directors joint meeting. Brandon and Assiniboine Regional Health Authorities, Souris Manitoba, November.

Martens PJ. Tips and strategies for success: Ten ways to succeed in academic life, or at least give it a good shot! The Community Health Sciences Student Forum, Winnipeg MB, November.

Martens PJ. The Need to Know Team, and knowledge translation. Internal Management Committee Meeting and What do Interlake's people look like? Health and health care use patterns. 9th Annual Rural and Northern Health Care Day (MCHP) Winnipeg MB, October.

Martens PJ. A look at the health of First Nations people of Manitoba. Ninth Annual Rural and Northern Health Care Day (MCHP), Winnipeg MB, October.

Martens PJ, Jebamani L. Learning from linkages: Health and healthcare use patterns of Manitoba's registered First Nations people. The Canadian Rural Health Research Society's 3rd Annual Conference, "Health Research in Rural and Remote Canada: Meeting Challenges, Creating Opportunities", Halifax NS, October.

Martens PJ. An overview of diabetes in Manitoba: From prevalence to prevention. The First Nations report, the adolescent Type II diabetes research, and the story of Sagkeeng. The First Nations and Inuit Health Branch Southeast Resource Development Council Diabetes Working Group meeting, Sagkeeng MB, October.

Martens PJ. The health of First Nations people in Manitoba. Medical Rehabilitation second year students. Winnipeg MB, September.

Martens PJ. Community breastfeeding research. Breastfeeding: A great start for baby, Manitoba Baby Friendly Co-ordinating Committee Conference, Brandon MB, September.

Martens PJ. Breastfeeding: A great start for baby. The Manitoba Baby Friendly Co-ordinating Committee conference, Brandon MB, September.

Martens PJ. An overview of diabetes in Manitoba: From prevalence to prevention (The First Nations report, the adolescent Type II diabetes research, and the story of Sagkeeng). The First Nations and Inuit Health Branch Diabetes Working Group meeting, Winnipeg MB, September.

Martens PJ. The Need to Know Team - an overview for Manitoba Health personnel. Manitoba Health, Winnipeg MB, September.

Martens PJ, Bowen S. The Need to Know Team - What is this and how does this involve Boards of Directors of Manitoba's RHAs? Regional Health Authority Board Chairs Network, Winnipeg, MB, September.

Martens PJ, Hedberg Nyqvist K, Riordan J. Designing lactation research: The good, the bad and the ugly. The Blueprint for Clinical Excellence, International Lactation Consultant Association Conference, Boca Raton FL, July.

Martens PJ Bowen S. Introduction and evaluation report. The Need to Know: Canadian Community Health Survey Training Workshop by Statistics Canada and Manitoba Health, Winnipeg MB, June.

Martens PJ. The First Nations report. The Burntwood Regional & Central Regional Health Authority Board and Executive meetings, Portage la Prairie, MB also Swampy Cree Tribal Council, The Pas MB and, MKO/Independent First Nations North, Thompson, June.

Martens PJ. The Need to Know Team, The First Nations Report – collaborative research with policy planners and decision makers. Doing interdisciplinary partnered health research. CIHR Institute of Population and Public Health. Talisman Resort, north of Toronto ON, June.

Martens PJ. The Need to Know Team Days. Winnipeg MB, June.

Martens PJ. Research design and statistics – back to the basics. Lactation Consultant Study Group. Winnipeg, April.

Martens PJ, Black C, Burland E. The Need to Know Team: A Manitoba knowledge transfer model. The Canadian Institute for Health Research meeting of the Community Alliances for Health Research projects, Ottawa ON, April.

Martens PJ. The Health and health care use of Registered First Nations people living in Manitoba: A population-based study. Health Canada, Ottawa ON, April.

Menec VH. The relation between ethnic background and self-rated health. Gerontological Society of America conference. Symposium title: The Study of Self-rated Health in the Context of Different Cultures I: The West and Middle East Boston, November.

Menec VH, MacWilliam L, Soodeen RA, Mitchell L. Trends in health care use among seniors in Manitoba. Canadian Association on Gerontology Conference, Montreal QC, October.

Menec VH, MacWilliam L, Soodeen RA, Mitchell L. A minority of seniors use a majority of hospital resources: A study of hospital use in Manitoba. Canadian Association on Gerontology Conference, Montreal, October.

Metge C. Drug utilization in Canada: Current policy initiatives. Teachers of Pharmacy Administration Annual Meeting, Mont-Tremblant QC, May.

Metge C, Yuen CK, Leslie W, Yogendran M, Kvern B, Manness LJ. Using a population-based evidence-based disease management program to prevent and treat osteoporosis in postmenopausal women. The Canadian Association for Population Therapeutics Annual Conference, Toronto ON, April.

Roos LL, Forsyth S, Chateau D, Bodnarchuk J, Soodeen R, Lix L. Place and health in Winnipeg. The Spatialisation and Health: Characterising Place: A problem-solving workshop held in Banff AB,

November 29 - December 1.

Roos LL. Western Regional Training Centre for Health Services Research, Winnipeg MB, April.

Roos LL. Data Linkages. The Western Regional Training Centre for Health Services Research, Spring Workshop, Manitoba Centre for Health Policy, Winnipeg MB, April.

Roos NP. Panel speaker: Advancing Quality in the Name of Patient Safety Conference, Fort Garry Place, Winnipeg MB, April.

Sareen J, Stein M, Campbell D, Hassard T, Menec V. Self-reported perceived need for care correlates with poor quality of life and family dysfunction in adults with mental disorders. Canadian Psychiatric Association Conference, Banff AB, October.

Shapiro E. What works, what doesn't: Federal and Provincial imperatives for elder health. Elder Care: Are We Ready for the Future? The Public, Policy Makers & Caregivers Speak to Caring Realities & Policy Imperatives International Conference by the Registered Nurses Association of Ontario Toronto, ON, September.

Shapiro E. The future of Medicare: A real or imagined crisis? The Boomers Come of Retirement Age: What are the Prospects? 13th Annual John K. Friesen Conference, Simon Fraser University, Vancouver BC, June.

Shapiro E. Medicine: Real or imagined crisis? The Grant Park Ward, Winnipeg MB, May.

Sirski M, Menec VH. The relation between continuity of care and health care use in Manitoba, Canada. International Epidemiology Association World Congress on Epidemiology, Montreal QC, August.

Soodeen R. Concept Dictionary Lab Session. The Spatialisation and Health: Characterising Place: A problem-solving workshop. Banff AB, November 29-December 1.

Uhanova J. The impact of socioeconomic status on clinical features and outcomes of acute myocardial infarction. Poster session of the Social Determinants of Health Across the Life-Span Conference, York University, Toronto ON, November 29 - December 1.

EDUCATION

Courses Taught in the Department of Community Health Sciences

Number	Title	Instructor
93.735	Research Methods in Health Care	Verena Menec
93.749	Empirical Perspectives on Social Organization and Health	Anita Kozyrskyj
93.757	Managing Health Systems	Anita Kozyrskyj
93.747	Biostatistics I-tutorials	Patricia Martens
93.748	Biostatistics II-tutorials	Patricia Martens
93.742	Pharmacoepidemiology	Colleen Metge
93.731	Epidemiology of Health Care	Les Roos

Courses Taught in Other Departments

Department	Course title	Instructor
Pharmacy	Principles of Professional Practice	Anita Kozyrskyj
Political Studies	Introduction to Politics and Government	David Stewart

Other Teaching Activities

Activity	Instructors	Contact hours
Lectures	Patricia Martens, Anita Kozyrskyj, Verena Menec, Colleen Metge, Leslie Roos, Carolyn DeCoster	38
Tutorials	Carolyn DeCoster, Anita Kozyrskyj, Patricia Martens, Verena Menec, Lisa Lix	44
Supervision	Leslie Roos, Noralou Roos	55
Exam set-up and marking	Anita Kozyrskyj, Patricia Martens	32
Colloquium Coordination	Patricia Martens, Lisa Lix	114
CHSRF Career Renewal	Leslie Roos	50
Award Mentorship		

Graduate Student Supervision

Student Name	Degree Sought	Advisor	Committee Member	Faculty Name
Cleary, Eilish	MSc	Yes		Patricia Martens
Daley, Pat	PhD	Yes		David Stewart
DeCoster, Carolyn	PhD	Yes		Noralou Roos
			Yes	Norm Frohlich
Franklin, Jonathon	PhD	Yes		Anita Kozyrskyj
Dow, Gordon	MSc	Yes		Charlyn Black
Fransoo, Randy	PhD	Yes		Noralou Roos
Hiebert, Shirley	PhD		Yes	Patricia Martens
Johnson, Charlotte	MSc	Yes		Charlyn Black
Kelly, Karen	PhD	Yes		Leslie Roos
Kleysen, Rob	PhD		Yes	Norm Frohlich
Kara McDonald	MSc	Yes		Anita Kozyrskyj
McMaster, Romy	MSc	Yes		Anita Kozyrskyj
Koene, Miriam	PhD	Yes		David Stewart
Pidlubny, Shannon	MSc	Yes		Anita Kozyrskyj
Lee, Sandra	MSc	Yes		Charlyn Black
Libich, William	MSc	Yes		Anita Kozyrskyj
McDonald, Kara	MSc	Yes		Patricia Martens
Mitchell, Lori	PhD	Yes		Charlyn Black
Neufeld, Hannah	MSc		Yes	Patricia Martens
Peterson, Sandra	PhD	Yes		Charlyn Black
Ross, Susan	MA		Yes	Evelyn Shapiro
Schultz, Linda	MSc	Yes		Charlyn Black
Siemens, Barbara	MSc	Yes		Anita Kozyrskyj
Turner, Nancy	MSc (U of Regina)		Yes	Lisa Lix
Uhanova, Julia	MSc	Yes		Leslie Roos
Weiss, Elise	MSc		Yes	Patricia Martens

MCHP COLLOQUIUMS IN THE DEPARTMENT OF COMMUNITY HEALTH SCIENCES

2003

The Politics and Predictors of HIV Related Stigma in the Context of International Research Ethics: The Example of Yunnan, China. By Sumit Gupta, University of Toronto, January 2

Keeping Abreast of the Issues: Results from the Manitoba Breast Cancer Outcomes Initiative. By Teresa Mayer, Department of Community Health Sciences, University of Manitoba; Steven Latosinsky, Surgical Oncologist, Department of Surgery, University of Manitoba; and Donna Turner, Epidemiologist, CancerCare Manitoba, January 24.

Determinants of Inappropriate Antibiotic Use in Children: Individual or Area Level Analysis. By Anita Kozyrskyj, Faculty of Pharmacy, University of Manitoba, MCHP, February 28.

2002

Getting Your Research Results Noticed: The Boomerang Effect. By Carolyn DeCoster and Randall Fransoo, MCHP, May 17.

Requirement for Registered Nurses to Provide Clinical Care to Inpatients: The Case of Alberta. By Ron Wall, Senior Economist and Head, Health Human Resources Section, Microsimulation Modelling and Data Analysis Division, Applied Research and Analysis Directorate, Health Canada, Ottawa, September 27.

Menorrhagia: Not Just a Medical and Social Problem. Philip Jacobs, Institute of Health Economics, University of Alberta, October 10.

ADVISORY BOARD MEMBERS

The role of the Advisory Board is to develop a broad perspective on problems confronting our health system and potential solutions, advise and assist MCHP to determine an appropriate set of activities to meet its goals and objectives, and to assure the long-term viability of MCHP. The Board meets twice a year. The following people served as members of MCHP's Advisory Board for all or part of the fiscal year ending March 31, 2003.

CHAIR:

Brian Postl, MD, Chief Executive Officer, Winnipeg Regional Hospital Authority

MEMBERS:

Ken Brown, MD, MBA, Registrar, College of Physicians and Surgeons, Manitoba chapter (retired)

Tom Carson, Former Deputy Minister of Culture, Heritage and Tourism, Province of Manitoba

Rick Dedi, Assistant Deputy Minister, Insured Benefits, Pharmacare and Labour Market Services, Manitoba Health

Daniel J Friedman, PhD, Assistant Commissioner, Bureau of Health Statistics, Research and Evaluation, Massachusetts Department of Public Health

Brian Hennen, MD, CCFP, Dean, Faculty of Medicine, University of Manitoba

Alan Katz, MD, Associate Professor, Family Medicine, University of Manitoba

Ben Levin, Deputy Minister of Education, Manitoba Education and Training

Arthur V. Mauro, CM, OC, Chairman of the Board, Investors Group Inc.; Chancellor, University of Manitoba

John S Millar, MD, Vice-President, Canadian Institute for Health Information

Tannis Mindell, Deputy Minister, Family Services and Housing, Government of Manitoba

J. Fraser Mustard, MD, PhD, OC, Founding President, Canadian Institute for Advanced Research

John O'Neil, PhD, Acting Head, Department of Community Health Sciences, University of Manitoba

Don Potter, Deputy Minister, Government Services, Province of Manitoba

Leslie L. Roos, PhD, Director, Manitoba Health Research Data Repository, Manitoba Centre for Health Policy; Professor, Department of Community Health Sciences, Faculty of Medicine, University of Manitoba

Noralou P. Roos, PhD, Co-Director, Manitoba Centre for Health Policy; Professor, Department of Community Health Sciences, Faculty of Medicine, University of Manitoba

Penny Sorenson, CEO, South Westman Regional Health Authority

Milton Sussman, Deputy Minister of Health, Province of Manitoba

Mark Taylor, MD, Deputy Head, Surgery, St Boniface General Hospital; Assistant Professor, Surgery, University of Manitoba

FACULTY AND STAFF

Researchers and Senior Researchers

Ruth Bond, Research Co-ordinator
Marni Brownell, Researcher
Dan Chateau, Post-Doctoral
Carolyn De Coster, Senior Researcher and Communications Coordinator
Greg Finlayson, Researcher
Randy Fransoo, Research Coordinator
Norm Frohlich, Senior Researcher
Alan Katz, Visiting Faculty
Anita Kozyrskyj, Researcher
Lisa Lix, Researcher
Patricia Martens, Researcher
Verena Menec, Researcher
Colleen Metge, Researcher
Lori Mitchell, Research Coordinator
Linda Romphf, Research Coordinator
Leslie Roos, Senior Researcher and Director of Data Repository
Noralou Roos, Director and Senior Researcher
Evelyn Shapiro, Senior Researcher
Ruth-Ann Soodeen, Research Coordinator
David Stewart, Researcher

Systems Development, Programming, Security and Technical Support

Bogdan Bogdanovic, Systems Analyst
Charles Burchill, Senior Systems Analyst and Security Coordinator
Don Fotti, Programmer
Matthew Dahl, Senior Programmer
Suzanne De Haney, Programmer
Shelley Derksen, Systems Analyst
Natalia Dik, Programmer Analyst
Oke Ekuma, Programmer Analyst
Loreley Greenslade, Programmer
Leonard MacWilliam, Systems Analyst
Rod McRae, Senior Systems Analyst
J Patrick Nicol, Systems Consultant
Sandra Peterson, Programmer Analyst
Monica Sirski, Programmer Analyst
Carmen Steinbach, Programmer Analyst
Ken Turner, Senior Programmer
Randy Walld, Systems Analyst
Marina Yogendran, Systems Analyst

Finance and Research Support

Jo-Anne Baribeau, Research Support
Louise Ferris, Research Support
Janine Harasymchuk, Research Support
Darlene Harder, Research Support
Linda Henderson, Finance Support
Phyllis Jivan, Research Support

Linda Kostiuk, Finance and Research Support
Carola Lange, Finance Support
Shannon Lussier, Research Support
Eileen Pyke, Research Support and Education Coordinator
Betty Taras, Research Support

Administration

Paulette Collins, Senior Administrator
Debbie Molina, Financial Officer
Carole Ouelette, Executive Assistant

Student Research Assistants

Continuing

Dhiwya Attawar, Jennifer Bodnarchuk, Elaine Burland, Laurel Jebamani, Jennifer Magoon, Paul Willetts,
Sam Kovnats

Summer

Anita Carrie, Sumit Gupta, Anna Dyck

ASSOCIATES

The designation of Associate of the Manitoba Centre for Health Policy and was created to recognize the valuable contribution made to its research by external participants. Associates are involved in collaborative research with an MCHP Researcher, have an ongoing commitment to health services research, have previous research involvement with scholarly publications, and/or have clinical/policy expertise that is of assistance to MCHP Researchers in framing research questions, interpreting results of particular analyses and advising on the policy implications of the findings. The following were Associates for all or part of the fiscal year ending March 31, 2003.

Nick Anthonisen, MD, PhD, Professor, Department of Internal Medicine, University of Manitoba

Fred Aoki, MD, Professor, Department of Medical Microbiology, University of Manitoba

Black, Charlyn, MD, ScD, Director, Centre for Health Services and Policy Research; Professor, Department of Health Care and Epidemiology, University of British Columbia

Shelley Buchan, MD, FRCP, Medical Officer of Health, Regional Health Authority-Central Manitoba Inc.

Keumhee Chough Carrière, PhD, Professor, Department of Mathematical Sciences, University of Alberta

Tom Carson, Former Deputy Minister of Culture, Heritage and Tourism, Province of Manitoba

Eilish Cleary, MD, Chief Medical Officer of Health, North Eastman Health Association Inc.

Raisa Deber, PhD, Professor, Department of Health Policy, Management and Evaluation, Faculty of Medicine, University of Toronto

Albert DeVilliers, MB.Ch.B, Regional Medical Officer of Health, Burntwood Regional Health Authority

Evelyn Forget, PhD, Professor, Department of Community Health Sciences, Faculty of Medicine, University of Manitoba

Betty Havens, DLitt, Professor and Senior Scholar, Department of Community Health Sciences, University of Manitoba; Research Fellow, Statistics Canada

Maureen Heaman, RN, PhD, Associate Professor, Faculty of Nursing, University of Manitoba

Philip Jacobs, D Phil, CMA, Professor, Public Health Sciences, Faculty of Medicine, University of Alberta

Meir Kryger, MD, FRCPC, Professor and Director, Sleep Disorders Centre, Faculty of Medicine, University of Manitoba; Division Head, Education, World Health Organizations World-Wide Project on Sleep Disorders

Barbara Law, MD, FRCPC, Associate Professor, Department of Pediatrics and Child Health, and Department of Medical Microbiology, University of Manitoba; Section Head, Pediatric Infectious Diseases, Children's Hospital, Health Sciences Centre

William Leslie, MD, FRCPC, Section of Nuclear Medicine, St. Boniface General Hospital; Associate Professor, Internal Medicine and Radiology, Faculty of Medicine, University of Manitoba

Jure Manfreda, MD, Associate Professor, Departments of Community Health Sciences and Internal Medicine, University of Manitoba

Blake McClarty, MD, FRCPC, Associate Professor, Department of Radiology, University of Manitoba; Clinical and Research Director, Magnetic Resonance Imaging Unit, St. Boniface General Hospital

Nazeem Muhajarine, PhD, Associate Professor and Research Faculty, Department of Community Health and Epidemiology, University of Saskatchewan

Robert P Murray, PhD, Associate Professor and Director, Alcohol and Tobacco Research Unit, Department of Community Health Sciences, University of Manitoba

Cameron Mustard, ScD, Professor, Department of Public Health Sciences, University of Toronto; President and Scientific Director, Institute for Work and Health, Toronto

John O'Neil, PhD, Head, Department of Community Health Sciences, University of Manitoba

Robert Reid, MD, PhD, Associate Director, Department of Preventive Care; Investigator, Center for Health Studies, Group Health Cooperative of Puget Sound, Seattle Washington.

Jan Roberts, MD, PhD, Medical Officer of Health, South Eastman Region, Manitoba; Assistant Professor, Department of Community Health Sciences, University of Manitoba

Phil St. John, MD, MPH, Assistant Professor, Department of Internal Medicine, University of Manitoba

Estelle Simons, MD, FRCPC, Bruce Chown Professor and Head, Section of Allergy and Clinical Immunology, Department of Pediatrics and Child Health, University of Manitoba

Leonie Stranc, PhD, Senior Statistical Analyst, Decision Support Services, Manitoba Health

Diane Watson, PhD, Assistant Director, Institute of Health Services and Policy Research; Research Associate, Centre for Health Services and Policy Research, University of British Columbia

COMMITTEES

Marni Brownell

- Internal Advisory Committee, Manitoba Health Injury Surveillance Report
- Peer Review Committee, Canadian Initiative on Social Statistics (CISS), Strategic Joint Initiative of SSHRC and Statistics Canada.
- Planning committee member, International Child Health Services Research Meeting
- Peer Review Committee, Canadian Population Health Initiative
- Core member, Canadian Institute for Advanced Research, New Investigators Network

Carolyn De Coster

- Review Panel, Knowledge Translation Strategies for Health Research, Canadian Institutes of Health Research,
- Steering Committee, Winnipeg Regional Health Authority-WCWL Implementation
- Steering Committee, Western Canada Waiting List Project, Phase 2
- Research Committee, Western Canada Waiting List Project, Phase 2
- Ophthalmology Headship Search Committee, Faculty of Medicine, University of Manitoba
- National Advisory Group, McMaster University Survey: Towards Best Practices in Research Transfer
- Hospital Abstract Users Group
- Health Information Technologist Advisory Committee, Red River College
- Joint WRHA/Manitoba Health Bed Inventory Advisory Group
- Manitoba Health Hospital Abstracting Advisory Group

Norm Frohlich

- Member Panel of SSHCR Research Grants Division
- Member Dean's Advisory Council
- Member, Search Committee for the Warren Chair in Actuarial Studies
- Community Health Sciences Search Committee for two tenure track appointments
- National Tri-Council Panel of Research Ethics

Alan Katz

- Chair, Health Research Ethics Board, Faculty of Medicine, University of Manitoba
- Senate Committee on the Ethics of Research Involving Human Subjects, University of Manitoba
- Faculty Committee on the Use of Human Subjects in Research, Faculty of Medicine, University of Manitoba (Research Ethics Board)

Anita Kozyrskyj

- Manitoba Director, Western Regional Training Program in Health Services Research
- Admissions Review Committee, National Training Program in Allergy and Asthma
- Human Ethics Research Board, Faculty of Medicine, University of Manitoba
- Research Review Committee, Heart and Stroke Foundation
- Board Member, Canadian Association for Population Therapeutics
- Research Review Committee, Heart and Stroke Foundation
- Canadian Association for Immunization Research and Evaluation
- Canadian Institute for Advance Research, Population Health Group
- Canadian Pharmacists Association
- Manitoba Pharmaceutical Association

Lisa Lix

- Health Information Standards Committee, Manitoba Health
- Manitoba Health Information Privacy Committee

- Health Services Utilization and Research Commission, Socio-Health Grants Review Committee, Saskatoon
- Canadian Institutes for Health Research, Health Services Evaluation and Interventions Research – A, Grants Review Committee
- Graduate Committee, Department of Community Health Sciences, University of Manitoba
- Visiting Scholar Series, Department of Community Health Sciences, University of Manitoba
- American Statistical Association
- Canadian Society for Epidemiology and Biostatistics
- Statistical Society of Canada
- Journal of Modern Applied Statistical Methods Editorial Board
- Canadian Psychology Editorial Board

Patricia Martens

- ACADRE Review/Advisory Committee (2002-2004) (Aboriginal Capacity and Developmental Research Environments), through the Manitoba First Nation Centre for Aboriginal Health Research
- Expert Review Panel for the Canadian Health Services Research Foundation (CHSRF) 2001 Open Grants Competition
- Expert Review Panel for the Manitoba Health Research Council
- Individual Expert Member on the Breastfeeding Committee for Canada
- Expert Advisor to the Baby Friendly Coordinating Committee of Manitoba, Manitoba Health and Regional Health Authorities
- Collaborative Perinatal Project Team, Manitoba Health
- Advisory Committee for Rural and Remote Health Innovations Initiative, Health Promotions and Programs Branch, Manitoba/Saskatchewan Region of Health Canada
- Provincial Advisory Committee for the Canada Prenatal Nutrition Program (CPNP)
- International Lactation Consultant Association (ILCA)
- Providence Theological Seminary Doctoral Program Research Ethics Board
- Editorial Board (research design/statistics advisor) of the journal, “Current issues in Clinical Lactation”
- Research and Evaluation Technical Advisory Group, Child and Youth Secretariat, Government of Manitoba
- Breastfeeding Promotion Steering Committee of Manitoba, Co-Chair

Verena Menec

- Undergraduate Education Committee, Department of Community Health Sciences
- Executive Committee, Department of Community Health Sciences
- Graduate Student Committee, Department of Community Health Sciences
- Health Research Ethics Board, Faculty of Medicine, University of Manitoba
- Subcommittee to examine options re non-thesis based Masters
- Centre on Aging Liaison Committee
- Centre on Aging Advisory Committee
- Canadian Longitudinal Study on Aging, Working Group
- Canadian Association on Gerontology
- Gerontological Society of America

Colleen Metge

- Chair, Osteoporosis Society of Canada, National
- Chair, National Drug Scheduling Advisory Committee, Advisory to the Provinces
- National Drug Utilization Advisory Group
- Canadian Institute for Health Information Expert Advisor
- Drug Effectiveness/Outcomes Research Workshop, Bureau of Licensed Product Assessment
- International Society for Pharmaceutical Outcomes Research

- Canadian Association for Population Therapeutics
- Canadian Pharmacists Association

Leslie Roos

- Associate Emeritus, Population Health Program, Canadian Institute for Advanced Research
- Research Advisory Committee, Institute for Health Economics, University of Alberta
- Tenure Promotion Review, University of Toronto

Noralou Roos

- Associate, Population Health Program, Canadian Institute for Advanced Research
- Medical Research Council
- Institute of Health Services & Policy Research Advisory Board
- Health Research Ethics Board, Faculty of Medicine, University of Manitoba
- Department of Community Health Sciences, University of Manitoba Search Committee

Evelyn Shapiro

- Member, Quebec's FRSQ peer-review committee to review proposals for study programs on hospital emergency services, Montreal
- Consultation, Health Canada's E-Health group, Ottawa
- Planning Committee for Workshop on Capitation, Montreal
- National Council on Ethics in Human Research
- Gerontological Advisory Committee, Department. of Veterans Affairs
- Department of Community Health Sciences, University of Manitoba Search Committee

KNOWLEDGE TRANSFER

Briefings

Prior to the release of a deliverable, Manitoba Health, including the Deputy Minister and Minister receives briefings which highlight the outcomes and recommendations of the particular report.

Additional briefings on the 2002/03 reports were provided to the WRHA and other specialty groups within the WRHA such as Senior Management, Program Team Managers, Family Medicine, Internal Medicine, Medical Nursing Team, Allied Health, and Emergency Medicine Team. Other groups include: Health Canada, Indian and Northern Affairs, Statistics Canada, Assembly of Manitoba Chiefs Health Committee, Assembly of Manitoba Chiefs Health Information and Research Committee, First Nation Groups in surrounding areas of The Pas and Thompson, Northern and Central RHA Board of Directors and First Nation and Inuit Health Branch.

Communications

Part of MCHP's mandate is to broaden and inform the debate about health, the health care system, and the determinants of population health. MCHP researchers are interviewed by journalists not only when a deliverable report is released, but also when there are other topics of interest. The following is a sample of such interviews.

Media Interviews

2003

De Coster C. Waiting lists Elena Cheney, *Wall Street Journal*, Toronto, January 8.

De Coster C. Decreasing length of stay in surgical patients. Sarah Yates, *Good Times*, February 6.

Kozyrskyj A. Asthma Study. *Winnipeg Sun*, January.

Kozyrskyj A. BC engage in major asthma study. Alexandra Paul, *Winnipeg Free Press*, January 9.

Martens PJ. CBC North Radio interview for Yellowknife NWT (taped in Winnipeg, MB) on diabetes, breastfeeding and First Nations community initiatives, March 13

Roos NP. Beds in hallway. Tom Walkom, *Toronto Star*, March.

2002

Forget EL. Interview on medical savings accounts with Vancouver radio station, July 23.

Frohlich N. Personal Care Home Report. Geoff Currier, CJOB radio December 11.

Kozyrskyj A. Romanow Commission findings on pharmaceuticals. Suzanne Dufresne, CBC news, November 28.

Martens P. Canada report on off-reserve aboriginal people. Comment on comparison to Centre report. Karen Pauls, CBC radio, August 27.

Martens P. Factors in early onset Type II diabetes in Manitoba's First Nations children. CBC Saskatoon Radio interview, Terry Mcleod, CBC Winnipeg Radio, October 30 and October 31.

Martens P. Manitoba scene about health care. Damien Wall, CBC Radio and CBC National TV, November.

Menec, V. Is getting the flu shot a good idea? Country Canada, CBC, November 6.

Menec V. Seniors and the Health Care System. CBC radio morning program, September 26.

Roos NP. The Canadian health care system. The Economist, October 1.

Roos NP. The Provinces Health Indicators report. Channel 5 CKY, September 23.

Roos NP. The Kirby report. Margaux Watt, CBC radio, October 25.

Roos NP. The Romanow Report. Shereen El Feki, The Economist, November 29.

Roos NP. The Romanow Report, Terry Macleod, CBC radio, November 26.

Roos NP, DeCoster C. Waiting Times (editorial). Gerald Flood, Winnipeg Free Press, November 26.

Roos NP. The Kirby Report. Reginald Star, CKNW - B.C. and Ontario Saturday Radio show, October 26.

Shapiro E. WRHA Accreditation Report. Alexandra Paul, Winnipeg Free Press, May 7.

Shapiro E. Home Care – Romanow Report. Damien Wall, CBC National radio, November 28.

Shapiro E. Home Care – Romanow Report. Suzanne Dufresne, CBC Winnipeg radio, November 28 & 29.

Shapiro E. Home Care – Romanow Report. Margaux Watt, CBC National radio, November 29.

Shapiro E. Price Waterhouse Cooper Consulting Survey. Tina Lemay, comments on CIHI 2002 report on the Health of Canadians, August 23.

Media Releases

2002

Estimating Personal Care Home Requirements. MCHP deliverable, December 2.

RBC Financial Group to Make Major Gift to Manitoba Centre for Health Policy, Oct 4.

The Health and Health Care Use of Manitoba's Seniors: Have they Changed Over Time? MCHP deliverable, Sept 25.

Profile of Medical Patients who were Assessed as Requiring Observation-level Services at Winnipeg Acute Care Hospitals in 1998/99. MCHP deliverable, August 12.

Projecting Hospital Bed Needs for 2020. MCHP deliverable, June 26.

The Health and Health Care Use of Registered First Nations People Living in Manitoba: A Population-Based Study. News Conference for release of deliverable, University of Manitoba, Winnipeg, MB, April 19.

Invited Consultations

In March 2003, Evelyn Shapiro was invited to provide consultation on long term care for the Parliamentary Sub-Committee of the Department of Veterans Affairs in Ottawa, ON.

RBC Financial Group Award for Research in Children's Health

MCHP is very pleased to announce the RBC Financial Group Award for Research in Children's Health. Over the next five years, RBC Financial Group will donate \$750,000 to MCHP for child health research. The Centre will focus this research on the broader determinants of child health such as discovering factors that reduce inequalities in health and educational success during two important periods of development: on entry to and approaching completion of school; and assessing how individuals/society can benefit from improved family socioeconomic circumstances.

This generous funding will allow us to recruit senior child health research fellows for one- to two-year periods. We hope to attract and recruit some of the leading scientists in the field of children's health.

Canadian Journal of Public Health Supplement, "Improving children's health: How population-based research can inform policy – The Manitoba experience." November, 2002

As there has been a growing interest in child health and well-being over the past several years, the Ministry of Health asked MCHP to provide a report on child health in the province of Manitoba. Together with an advisory group made up of clinicians, researchers, policy makers and government representatives, MCHP produced an encyclopedic report on child health in Manitoba, on which the papers in this supplement are based.

The Healthcare Management Forum Supplement, "Monitoring the acute care sector: Key measures and trends." Winter 2002

MCHP, along with the Canadian College of Health Services and the University of Manitoba worked cooperatively to produce the Winter 2002 Supplement Issue of the Healthcare Management Forum.

This supplement was a composite of recent work by researchers at MCHP that examines the use and delivery of hospital care in the province of Manitoba. The theme of the supplement, *Key Measures and Trends*, reflects the growing interest of health services managers and researchers in monitoring healthcare use for quality improvement processes and public accountability.

MCHP CentrePiece Newsletter

Our newsletter, CentrePiece is published twice annually. Read our latest edition, Issue # 13, released in Spring 2003.

Rural & Northern Health Care Days

MCHP hosts an annual Rural and Northern Health Care Day, designed specifically to highlight MCHP research of relevance to the rural and northern Regional Health Authorities of Manitoba. The format for the day is workshop-oriented, whereby reports are highlighted and then further explored in facilitated round-table discussions by each RHA. The 9th annual day was held on October 8, 2002 and chaired by Dr. Patricia Martens. The focus was on two MCHP reports – the First Nations health report (P. Martens), and a report on examining differences in health of various regions over time (M. Brownell). We had an all-time record attendance, well over 100 people with representation from every RHA of the province! Moreover, for the first time the RHA Team members of *The Need To Know* project were involved with the facilitation of the research discussions. The highlight of the afternoon was a plenary speech by Steven Lewis, on “how do you know if you’re an evidence-based decision-maker”, followed by a panel discussion involving Noralou Roos (Director, MCHP), Reg Toews (CEO, South Eastman RHA), and Jackie Halliburton (Board member, Central RHA). The audience was then treated to brief overviews of two deliverables in progress at the time – estimating PCH bed requirements (C. DeCoster), and the health of Manitoba’s seniors (V. Menec), as well as a concurrent computer session on navigating MCHP’s Web site (R. Fransoo and E. Burland).

WRHA/MCHP Health Care Day

MCHP, jointly with the WRHA, planned the first ever WRHA/MCHP Health Care Day April 29, 2003, chaired by Dr. Patricia Martens. This was patterned after the extremely successful MCHP Rural and Northern Health Care Days’ workshops, which are in their tenth year. The workshop was held at Deer Lodge Facility’s Learning Centre, with the highlight being the First Nations health report (P. Martens) followed by round-table facilitated discussions led by MCHP staff (researchers, research coordinators, research assistants, and programmers). Before lunch, each group shared their insights and the graphs which pointed out a health or health care issue of interest from their planning and policy perspective. Attendance was around 40, with many First Nations representatives present to enrich the discussion. The afternoon included brief overviews of two upcoming deliverables – patterns of health care use at the end of life (V. Menec), and supply, availability and use of family physicians in Winnipeg over time (A. Katz).

The Need To Know Team Events

The Need To Know project involves collaborative research by MCHP, the ten non-Winnipeg RHAs, and Manitoba Health. High level planners and decision-makers from each RHA are chosen to attend these meetings. This is funded through the Canadian Institutes of Health Research (the Community Alliances for Health Research Program 2001-2006: PI P. Martens and C. Black). The goals of this project are (a) to create new knowledge directly relevant to the rural and northern RHAs; (b) to develop useful models for health information infrastructure, training, and interaction that will increase and improve capacity for collaborative research; and (c) to disseminate and apply health services research so as to increase the effectiveness of health services, and ultimately the health of RHA populations.

The team meets three times a year, for two-day sessions in Winnipeg. These meetings are designed to respond to the goals by including relevant activities. Because of the enthusiasm of all participants and the CEOs of the RHAs, the team is expanding from one to two persons per RHA for the year 2003. In the past year, the team has been working on a deliverable – *The Manitoba RHA Indicators Atlas: Population-Based Comparisons of Health and Health Care Use* – which was released in June 2003. The second collaborative research project has already begun – a deliverable focussing on mental health issues. The two-day meetings also incorporate a variety of sessions designed to encourage two-way learning between researchers and planners/policy-makers. This has included a huge variety of sessions, such as “Statistics 101”, using research in organizations, computer training sessions for bulletin board use, using library resources, planning for disseminating deliverable information throughout the RHAs, and how to conduct survey research. A key element of the project is the evaluation component by Sarah Bowen. Through in-person interviews and surveys of the team members and key stakeholder groups (including the RHA CEOs), Sarah is trying to examine how knowledge transfer takes place, what works and what does not, and what improvements can be made to the project itself. Despite the intensity of the meetings, *The Need To Know* team also finds time to have fun and learn creatively at the lunch and dinner meetings. The team has been spreading the word of its success through oral and poster presentations at such diverse research forums as Halifax, Saskatoon, and Montreal. People throughout Canada are beginning to take note of the success of a collaborative research approach, and how it is being fine-tuned in Manitoba!

Training

SAS Tutorial Feb 2003

The SAS Tutorial ranged from a beginning to an intermediate level and consisted of four half-day sessions. Students came from a wide variety of areas such as Western Regional Training Centre, Community Health Sciences and Manitoba Health. This tutorial was taught by Shelley Derksen and Charles Burchill.

Visitors

2002

In October, Mr. Bruce MacKenzie, Vice President, Prairies, RBC Royal Bank made the announcement of a major gift to MCHP for Child Health Research.

2003

MCHP welcomed several visitors in February. On the 3rd and 4th, we were pleased to welcome four representatives from the Quality Improvement and Health Information (QIHI) Unit of the Calgary Health Region: Ward Flemons, Medical Director; Edwin Enns, Senior Analyst and Economist; Stafford Dean, Leader, Health Systems Analysis Unit; and Hude Quan, Epidemiologist, QIHI and Assistant Professor, University of Calgary.

On the 6th, Victor Glickman, Director of Edudata Canada presented a talk about the challenges and opportunities in supporting policy and education research.

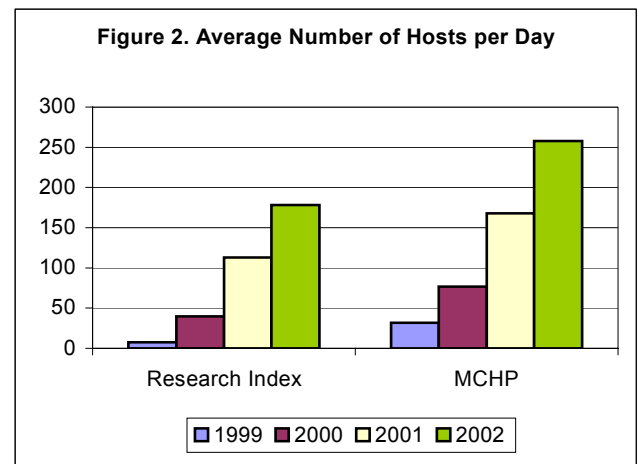
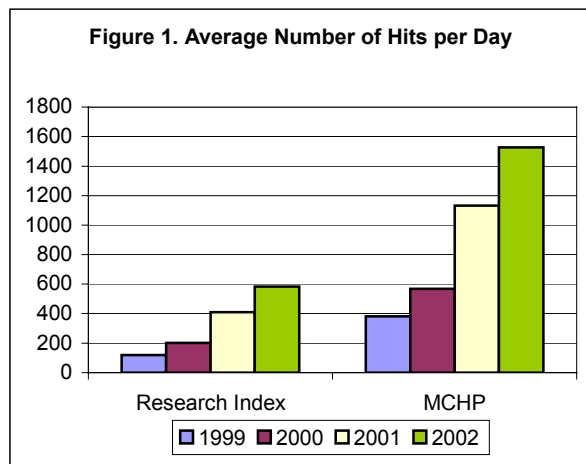
Also during the month of February, we received a visit from senior research and systems and security staff from the Centre for Health Services and Policy Research, Vancouver to view our new site as a model for their future CFI funded site. (Feb 11, 12).

MCHP's Web site

To date, MCHP has generally emphasized content over technology in Web site development by combining functions cost-effectively in an external web site. Documentation and dissemination overlap to keep marginal costs low. Given the high cost of developing Internet-based educational materials (emphasized in a recent Canadian Association of University Teachers bulletin), the integration of this material into lectures and courses has been particularly cost-effective.

MCHP began monitoring Web site use in January 1998 using access logs from the University of Manitoba Apache WWW server. This approach permits counting the number of "hits" and unique hosts accessing and loading information from specified Web site locations. A hit is counted once for every time a browser goes to the server and requests a new Web page. A host represents a unique internet ID, either the ip (internet protocol) number or the resolved host name.

Care is required when interpreting information generated by automated computer monitoring. Hits, for example, are counted once for each graphic file within a web page and once for every time internet crawlers or "bots" are automatically sent by search engines as they update their own sites. Graphic files have been excluded from the counts in the graphs below (Figures 1 and 2), but internet crawlers are not always easily identified. As well, certain hosts may represent a network of firewalled users who are not distinguishable using this method (for example, one host may represent 50 different users). On the other hand, because of the Concept Dictionary use at Monash University in Australia and "mirroring" of Epidemiology Supercourse lectures in approximately 39 servers worldwide, these figures probably substantially represent an underestimate of international interest.



Figures 1 and 2 track the average number of hits and hosts per day for the last four years for both the entire Web site and for the Research Resources Index, which includes the Concept Dictionary. The total average number of unique hosts accessing the MCHP Web site has basically doubled for each consecutive year and suggest this trend may continue for 2003. The total average number of hosts per day increased to 402 in February 2003, up from 354 the previous month and a substantial increase over the 242 hosts per day documented for February the previous year. Average total number of hits for February rose to 2,098, an increase of about 22% from the 1,714 tracked the previous month, and almost 50% higher than the 1,415 hits in February of the previous year.

Concept Dictionary

Aiming for a consistent approach to research design, MCHP has created a publicly-accessible, web-based knowledge repository (the Concept Dictionary and accompanying glossary and protocols) <http://www.umanitoba.ca/centres/mchp/concept/>, comprising various concepts, methods, and tools appropriate for working with administrative data. The potential for error and for “re-inventing the wheel” is reduced, helping the Centre to carry out its mandate to provide accurate and timely information to health care decision-makers, analysts and providers. By making explicit the assumptions associated with use of each research measure, the repository encourages the use of standard terminology and methodology, helps to preserve institutional knowledge and prevent duplication of effort, facilitates collaboration, and aids project management.

Concepts were developed from discussions with MCHP programmers about what they felt researchers and fellow programmers needed to know for research continuity. The concepts contain answers to frequently asked questions, programming tips/cautions and descriptions of database analysis topics. Content has been designed to provide ongoing operational support to researchers and programmers. The Dictionary also includes the names of people who can provide more information about a research concept.

Standard data dictionaries typically describe the structure of a given database system, including “standard names for variables, formats, interpretation of the variables, and an overview of known problems and recommendations”. The Concept Dictionary goes well beyond the Data Dictionary model by providing operational definitions of analytical concepts developed and used by local health researchers and programmers, describing in detail new variables and frameworks for analysis. Researchers have called for “metadata” - “data about data” - to describe the content, source, vintage, accuracy, quality, and other characteristics of data. Organized alphabetically, the Concept Dictionary responds to this need by currently including descriptions for well over 200 concepts, with SAS programs to implement the concept where appropriate, and discussions of alternate formulations and associated problems. Local expertise and references are noted and links to related terms are incorporated from groups in other provinces. Concepts have also been incorporated as hyperlinks in other research aids (such as research protocols) and in teaching materials (both site-specific courses and the Epidemiology Supercourse).

FINANCIAL INFORMATION

In addition to the \$1.85 million in funding received from Manitoba Health as described below, MCHP researchers continued to be successful in receiving career awards and research grants in peer-reviewed competitions. MCHP operating funds from these other sources for 2002/03 totalled approximately \$1.87 million.

Manitoba Centre for Health Policy Annual Budget – 2002/2003	
Salaries	
Staff	910,000.00
Support Staff	324,000.00
Benefits	174,000.00
Payroll Levy	26,500.00
External Contracts	70,000.00
Salaries Subtotal	\$1,504,500.00
Other Expenditures	
Office Expenses	190,500.00
Equipment	
Purchases	111,000.00
Maintenance	4,000.00
Other Expenditures Subtotal	\$345,000.00
TOTAL	\$1,850,000.00