



# Annual Report 2018-19

Manitoba Centre for Health Policy

Data | Insight | Informing Solutions



**University  
of Manitoba**

**Rady Faculty of  
Health Sciences**

# BRODIE CENTRE

727

The University of Manitoba





# Contents

<b>About the Manitoba Centre for Health Policy</b>	<b>2</b>
<b>Mission and Objectives</b>	<b>3</b>
<b>Highlights of MCHP Activities for 2018-19</b>	<b>4</b>
<b>Research</b>	<b>5</b>
<b>New Research</b>	<b>7</b>
<b>In Focus: Relationships for Success</b>	<b>8</b>
<b>Education</b>	<b>9</b>
<b>Managing our Data Repository</b>	<b>10</b>
<b>Providing Access to Data</b>	<b>11</b>
<b>Knowledge Translation</b>	<b>11</b>
<b>People</b>	<b>12</b>
<b>Financial Report</b>	<b>14</b>
<b>Advisory Board</b>	<b>16</b>

# Director's Message

Annual Reports serve a variety of purposes. While external funders often require them, they also serve an internal function by stimulating reflection. I am extremely proud of the achievements of our staff at MCHP over the past year. The Centre has continued to grow in a number of areas and continues to build on past achievements. We are working to improve current external relationships and build new ones. Many of our staff have developed new skills that help us achieve our goals while maintaining a remarkable workload. In addition, we strive to maintain a healthy, enjoyable workplace during challenging times of fiscal restraint.

This year we are reflecting on the relationships that make the work we do at the Centre possible. The foundations of the Centre were built on collaborative relationships between data providers and research. We have made significant progress forming collaborative connections since those early years.

Today MCHP has many relationships not only with data providers but also our research users. This year MCHP held its very first Public Engagement Group meeting. The Public Engagement Group enables MCHP to partner directly with Manitobans, ensuring the work we do is always beneficial for those we serve.

As we enter the next year with exciting opportunities to build new collaborative relationships both in Manitoba and across Canada, I know we shall all work hard to address the Centre's mission.

**“We have made significant progress forming collaborative connections since those early years.”**



Dr. Alan Katz MBChB, MSc, CCFP, FCFP

Director

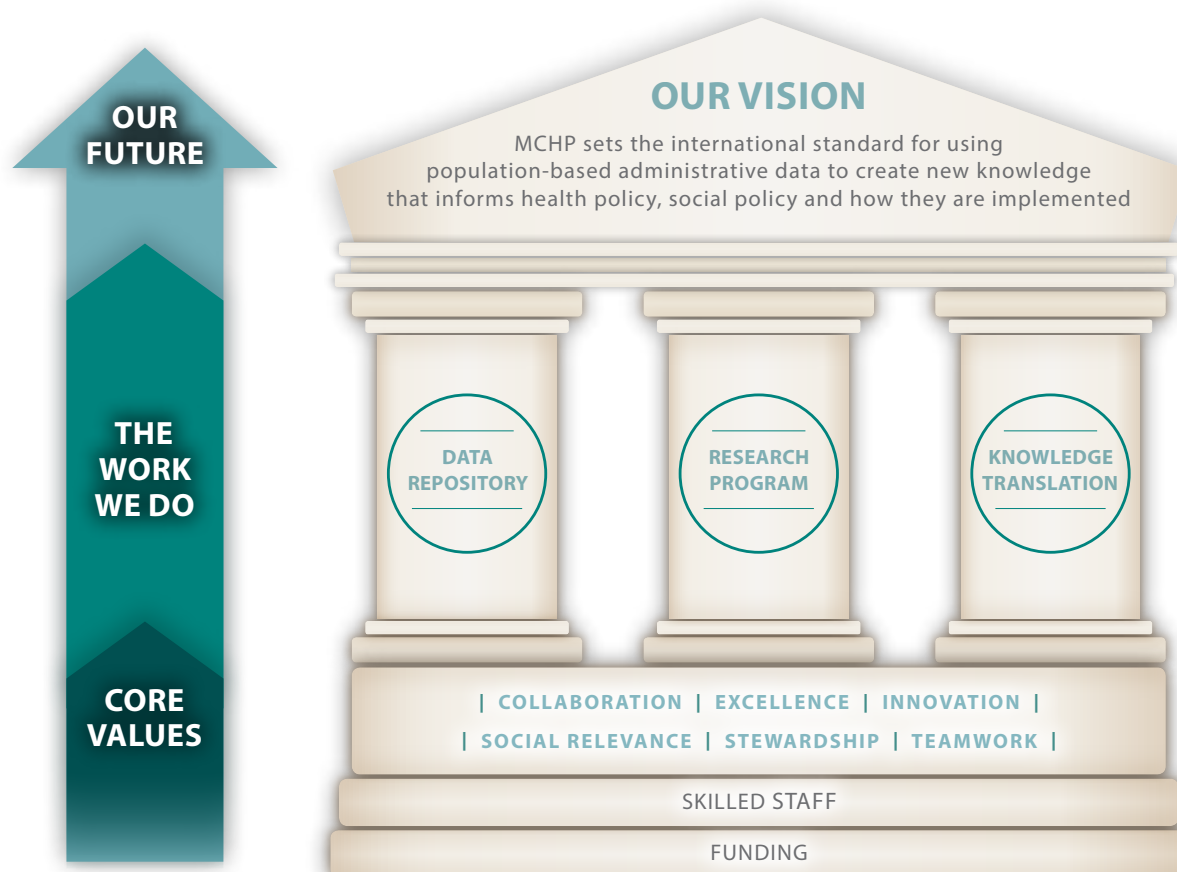
# About the Manitoba Centre for Health Policy

What makes Manitobans healthy?

The Manitoba Centre for Health Policy (MCHP) is a research unit within the Department of Community Health Sciences, Max Rady College of Medicine, Rady Faculty of Health Sciences at the University of Manitoba. Our work focuses on the health and the determinants of health of Manitobans. The Centre was set up in 1990 to manage a Population Data Repository and to use it for research into how factors like healthcare, health programs and policies impact health outcomes.

The Manitoba Population Research Data Repository is a comprehensive collection of administrative, registry, survey, and other databases primarily comprising residents of Manitoba. It was developed to describe and explain patterns of healthcare and profiles of health and illness, and, more recently, to facilitate inter-sectoral research in areas such as healthcare, education, and social services. The administrative health database, for example, holds records for virtually all contacts with the provincial healthcare system (the Manitoba Health Services Insurance Plan), including physicians, hospitals, personal care homes, home care, and the pharmaceutical prescriptions of all registered individuals.

The Repository data are de-identified. Research is subject to a rigorous approval process to ensure compliance with the Personal Health Information Act and other applicable legislation. MCHP provides the infrastructure to support researchers' access to the data and analytic services. MCHP has approximately 50 full-time staff: researchers, data managers, data analysts, research coordinators and support staff. Our researchers benefit from collaboration with peers across Canada, the United States, Europe, and Australia. We also have an advisory board bolstered by high-profile representatives from research, healthcare, business, and government. MCHP acts as a steward of the data.



# Mission and Objectives

The University of Manitoba's mission is to create, preserve, communicate and apply knowledge, contributing to the cultural, social and economic well-being of the people of Manitoba, Canada and the world. MCHP works within the 'Integrative Research in Health and Well-being' theme within the University of Manitoba's Strategic Research Plan, and is a key component of the signature area on 'Population and Global Health'.

**Our strategic objectives, detailed in our strategic operational plan, cover the following areas:**

1

To maintain and enhance a population-based data repository (Repository) that meets the needs of researchers, graduate students, and analysts in a privacy-compliant environment;

2

To advance the research capacities of the Centre and its affiliated researchers, to support research which is relevant, and uses the most appropriate methodologies;

3

To integrate knowledge translation within our work, to measure the impact of our research on policy and practices, and engage the public in our research, where relevant;

4

To maintain the strong foundation needed for a centre of excellence by securing adequate funding, supporting skilled staff, and being accountable for our funding.

# Highlights of MCHP Activities for 2018-19

## In Numbers

98

Publications



2

Post-doctoral  
Fellows

17

PhD  
Students

22

MSc  
Students

Manitoba Population  
— Research Data —  
Repository supports

283

Studies

22

MSc  
Theses

17

PhD  
Theses

MCHP is contracted to work on five deliverables each year for Manitoba Health, Seniors and Active Living which take on average approximately 2 years to complete. Over the past year, we released the six government deliverables, discussed below. MCHP researchers lead these projects, with input from clinicians, policy makers, and other partners as co-investigators or on advisory groups. This engagement has enriched the reports we produce. Our researchers are also highly successful in getting grants for their own individual programs of research, and they (and their students) have published 98 peer-reviewed publications this year (17 as first author) and contributed to more than 100 presentations (50 as first author/presenter). Over the past year, MCHP has built some new partnerships that have resulted in new research and brought in exciting new data to the Manitoba Population Research Data Repository, for example, with Food and Human Nutritional Sciences and Winnipeg Harvest on food and nutrition security. In addition, Centre researchers looked at diabetes medication prescribing patterns for the Health Research Foundation, and Dr. Alan Katz has developed a new partnership with the RehFit Centre and Wellness Institute to explore the impact of their programs on health outcomes.

New researchers Drs. Marcelo Urquia and Nathan Nickel are growing their research programs. Dr. Urquia began his term as Canadian Research Chair (Tier II) in Applied Public Health, focusing on immigrant health and well-being, gender-based health inequalities, and refugee settlement. Dr. Nickel is building his program looking at breastfeeding and advancing maternity practices with partners across North America.

MCHP recruited a new researcher, Dr. Alyson Mahar who is building her research program focused particularly on groups such as military service personnel and their families and veterans and others who experience disrupted and discontinuous access to healthcare. Her research program will expand the research of the Centre and the data in the Repository, and bring in new partners.

# Research

Under the ongoing contract to Manitoba Health, MCHP released six deliverables this year:

## Strategies for Developing a Personal Care Home Report Card in Manitoba

**Doupe M, Brownell M, McDougall C, Koseva I, Dik N, McCulloch S, Sarkar J**

Personal care homes (PCHs) provide care to people who face significant and multiple challenges. Strategies are needed to help care providers continually improve the quality of the medical and social care in PCHs, and to help Manitobans identify facilities where they may like to live. The purpose of this study was two-fold. First, we identified clinical quality indicators (QIs) that providers and planners feel are most appropriate to use in PCHs. We compared these QIs across facilities in ways that help stakeholders identify residents for whom quality of care is good and also where improvements may be needed. Second, by reviewing existing websites and the academic literature, we developed a list of recommendations for developing a PCH report card website in Manitoba. This website should be designed to help people identify PCHs where they or their loved ones would like to live, and to facilitate discussions between residents and providers about the goals PCH care.

## Exploring Tuberculosis Treatment, Management, and Prevention in Manitoba's Administrative Health Data

**Lix LM, Plourde PJ, Larcombe L, Kinew KA, Basham CA, Derksen S, Srisakuldee W, Schultz J, McCulloch S**

This report, produced in collaboration with First Nations partners, linked the Manitoba Tuberculosis (TB) Registry to other administrative health databases to investigate the health, healthcare use, and outcomes of people with active TB disease. In addition, we examined the health and outcomes of people receiving treatment for a latent (i.e., sleeping) TB infection; these people were identified from Manitoba's prescription drug data. We looked at all active TB cases and treated latent TB cases in Manitoba spanning 15 years (1999-2014). People with active TB had high rates of health service use around the time of diagnosis. Persons with latent TB demonstrated treatment completion rates that may not be high enough to prevent TB from spreading, suggesting a need for better treatments that make it easier for patients to complete their treatment. The data tell us that there is still room for improvement in many areas to help identify persons with active and latent TB across Manitoba as early as possible. As well, funding for new technology and research is essential to help with monitoring new TB cases, so that healthcare providers can act quickly to curb the spread of TB. Manitoba has the highest rate of TB of all Canadian provinces. With adequate funding and the support of partners in TB monitoring and care, the goal of TB elimination in Manitoba is realistic.

## Mental Illness Among Adult Manitobans

**Chartier M, Bolton J, Mota N, MacWilliam L, Ekuma O, Nie Y, McDougall C, Srisakuldee W, McCulloch S**

Mental illness is prevalent across Manitoba and Canada. Statistics Canada reports that 20% of Canadians will experience a mental illness in their lifetime. This Manitoba report provides valuable background information on the burden of mental illness in the province and some insight into the longer-term associations between childhood/adolescent mental illness and adverse adult outcomes. Specifically, we examined the diagnostic prevalence of mental illness among adults in Manitoba, as well as the healthcare use and justice system involvement of adults with mental illness. To address the mental health needs of certain populations who may be at higher risk of mental illness, this report presents the prevalence in specific populations of Manitoba. A cohort of Manitobans born in the province was also developed to examine the relationship between childhood/adolescent mental disorders and adverse adult outcomes. The findings of this report will be important for planning services and programs to diagnose and treat mental illness. Coordinating services among government departments, including health, social services, education and justice, will also go a long way towards ensuring better care for Manitobans at risk for and suffering from mental illness. Finally, supporting mental health research is an essential part of understanding what works and what is needed to strengthen mental health services for Manitobans.



## Outpatient Oral Anticancer Agents in Manitoba

**Raymond C, Leong C, Fransoo R, Geirnaert M, Dragan R, Yogendran M, Thomson T, Rajotte L, Koseva I, Schultz J, Burchill S**

Most Manitobans who receive treatment for cancer do so with intravenous therapy at Cancer Care Manitoba. However, in recent years, the use of oral anticancer agents has increased. Traditionally, prescriptions for these medications are filled at community pharmacies through the usual system of prescription drug coverage, including a deductible for eligible Pharmacare prescriptions. In 2012, the Home Cancer Drug (HCD) Program was launched. This is a program for Manitobans diagnosed with cancer that allows access to eligible outpatient oral cancer and specific supportive care drugs at no cost to the patient (with no deductible). This research project sought to determine usage of oral medications in Manitoba, changes in patterns of use and prescription filling over time, and the impact of the HCD program on prescription filling patterns. Using prescription drug data for outpatients we examined prescription utilization trends, costs associated with such therapies and patterns of health services use.

## Health and Social Outcomes Associated with High-Risk Alcohol Use

**Nickel NC, Bolton J, MacWilliam L, Ekuma O, Prior H, Valdivia J, Leong C, Konrad G, Finlayson G, Nepon J, Singal D, Burchill S, Walld R, Rajotte L, Paille M**

Alcohol is enjoyed by many Canadians and has special social and cultural significance in Canadian society. However, over-consumption of alcohol is linked with many, far-reaching harms. Recent data suggest that one in five Canadian drinkers exceed Canada's low-risk drinking guidelines. This study examined high-risk drinking behaviours and associated outcomes among Manitobans. We used linked data housed in the Manitoba Population Research Data Repository to answer the following questions: (1) How many Manitobans are drinking more alcohol than is recommended by Canada's low-risk drinking guidelines and has this number changed over time? (2) How many Manitobans have been diagnosed with an Alcohol Use Disorder over the past 20 years? (3) What are the patterns in healthcare utilization, social service use, and interactions with the justice system among individuals with a diagnosed Alcohol Use Disorder? Our analyses suggest several opportunities where supports can be put in place sooner to help Manitobans who are dealing with harmful consequences of high-risk drinking.

## The PAX Program in Manitoba: A Population-Based Analysis of Children's Outcomes

**Brownell M, Chartier M, Au W, Schultz J, Stevenson D, Mayer T, Young V, Thomson T, Towns D, Hong S, McCulloch S, Burchill S, Jarmasz J**

PAX was piloted in almost 200 schools with close to 5000 Grade 1 students across the province in the 2011/12 school year in a cluster randomized controlled trial implemented by Healthy Child Manitoba. The first part of this deliverable involved transferring the PAX datasets to the Manitoba Population Research Data Repository where these data were assessed through the standard Data Quality Programs. The metadata (e.g. data model, data dictionary) for the databases were developed and an assessment of the content of fields completed. The second part of the deliverable involved linking the PAX datasets with other data in the Repository to evaluate the impact of PAX on outcomes at the end of grade 1, in grade 3 and up to grade 4. The results suggested that students had fewer hyperactive and aggressive behaviours, fewer mood problems and more helping behaviours in the classroom as a result of PAX.

## Knowledge Translation (KT)

The Manitoba Centre for Health Policy brings government departments and rural health agencies together to exchange information about research in the province. In the past, MCHP has had separate KT days for Health Authorities and a day for Government. On September 25, MCHP brought everyone together for a single 'Evidence to Action' Workshop. MCHP staff facilitated at tables where staff from different government departments mixed with staff from health authorities. The focus of the day was a whole government approach, considering multi-sectoral impacts of social programs, and system coordination.

# New Research

Researchers at MCHP carry out research into the health and wellbeing of Manitobans across a broad spectrum of issues. Some of the newer research areas are highlighted below:

## Immigrant Health

Dr. Marcelo Urquia's research program focuses on the health and social wellbeing of immigrants to Canada. MCHP developed partnerships with Immigration, Refugees and Citizenship Canada as well as the Immigration Team in Government of Manitoba to bring in data to identify immigrants in Manitoba to support a growing research program that should support programs to assist settlement.

## Alcohol, Smoking, Cannabis and Meth

Following successful deliverable research for Manitoba Government into the impacts of alcohol and smoking on health using MCHP Repository data, Dr. Nathan Nickel has expanded his research into smoking and drug use with projects on Cannabis and methamphetamine use through a number of projects.

## Veteran and Military Family Health

In 2018, Dr. Alyson Mahar joined the MCHP researcher team. Her research program includes research on the health and welfare of veterans and military families, groups of individuals who often lack continuity of care due to deployment, as well as complex health and psychological trauma from active service.

## Indigenous Health

Over the past few years, Dr. Alan Katz has led MCHP to develop programs of research that build partnerships with Indigenous researchers and organizations. MCHP researchers collaborate with First Nation, Metis and Inuit organizations and partners. For example, Dr. Mariette Chartier leads a project working with a number of First Nations communities to implement a First Nation Good Behaviour Game, and to evaluate the benefits for mental health and educational outcomes, and Drs. Nathan Nickel and Marni Brownell are leading new projects that use Justice Data in partnership with Metis and First Nations.

## SPECTRUM (Social Policy Evaluation Collaborative Team Research at Universities in Manitoba)

Under the leadership of Drs. Marni Brownell and Randy Fransoo, MCHP is participating in a partnership development project funded by SSHRC (Social Sciences and Humanities Research Council). The aim of the partnership is to build relationships that support research to address difficult to solve problems ('wicked problems'), which cross government department and community agency responsibilities. Partners include researchers from multiple faculties (Arts, Education, Law, Social Work, Health Sciences) from University of Manitoba and University of Winnipeg, Senior government staff and policy leads from multiple government departments and representatives from a broad range of community organizations.

# In Focus:

## Relationships for Success

The foundation of the Manitoba Centre for Health Policy is the rich repository of health and social datasets that can be linked together for research into the health and well-being of Manitobans. This Repository began to be developed in the 1970s by Drs. Noralou and Leslie Roos, who built their research programs using electronic hospital and physician records to answer questions of interest to the Manitoba Health Services Commission and later Manitoba Health.

Building the Repository has meant building relationships. Bringing in new data means identifying data providers, building trust through appropriate and safe handling of data, and exploring the potential uses and benefits that can result from the research that MCHP, and associated researchers conduct with it.

Such rich datasets need expertise to link and develop robust methodologies for analysis. They need clinical and epidemiology expertise, and as the data were expanded to social data, they needed social science expertise. MCHP is founded on the strong relationships Drs. Roos built with the Minister of Health to understand the Government's need for evidence and their effective practices for communicating the findings. A long-term contract with steady funding and annually agreed research projects ("deliverables") began in 1992.

Since then, MCHP has grown exponentially, annually bringing in new datasets, and supporting new researchers using linked data. One of the annual projects is done in collaboration with the Need to Know Team established by former Director Dr. Patricia Martens in 2001. This interactive Team involves MCHP researchers and data analysts with decision-makers and planners from Regional Health Authorities and Government, who together develop research projects from beginning to end. Building capacity to understand the need for research and to interpret and use the results has been a fundamental function of this team that has benefited all participants. This principle has become a core in MCHP's knowledge translation activities, and one that has helped MCHP make an impact in policy development and delivery in Manitoba.

In the past year, MCHP has focused on building relationships in a number of different areas:

- We have strengthened our relationships with government departments to increase our non-health related work through a number of Quick Turnaround projects. MCHP has provided data and supported capacity-building among analysts in government departments to use and interpret the information in their data.
- MCHP was a founding member of a partnership with data centres across Canada that have now come together through a \$39M project to develop the SPOR-Canadian Data Platform to support multi-province and cross-jurisdictional research.
- Over the past few years, MCHP has worked with successive teams at Immigration Refugees and Citizenship Canada to bring in the Permanent Residents database to support research about the health and wellbeing of immigrants. We received the data in 2018 and the first projects have already begun.
- We have built some new partnerships with community organizations to do research including Winnipeg Harvest.
- We are strengthening our partnerships with researchers from multiple disciplines, government policy makers from Families, Education & Training, Justice, and Healthy Child Manitoba, and community agencies through SPECTRUM (Social Policy Collaborative Team Research at Universities in Manitoba). SPECTRUM is a partnership focused on using the MCHP Repository data to conduct applied research and evaluation on existing social services, programs and policies.
- We have looked beyond health and social datasets to environmental data and MCHP is part of the Canadian Urban Environmental Health Research Consortium (CANUE) project to establish a platform of environmental data across Canada.

Looking to the future, MCHP is strengthening relationships in a number of areas:

- The importance of data management and analytical techniques has been recognized by the University of Manitoba. The University is supporting the recruitment of four Canada Research Chairs to the Rady Faculty of Health Sciences in 2019-20, and one of these will be at MCHP.
- MCHP has strengthened its relationships with other health research groups at the University of Manitoba and will come together with the Centre for Healthcare Innovation, the Manitoba Training Program, and the TREC program to form the Manitoba Learning Health System Network next year.
- MCHP is a core part of the Manitoba Government's Provincial Data Management Strategy that will improve the use of data for policy use and research over the next few years.
- MCHP researchers have established strong partnerships with Indigenous organizations and are delivering a number of research projects in partnerships with researchers from the First Nations Health and Social Secretariat of Manitoba (FNHSSM), the Manitoba Metis Federation, and the Manitoba First Nation Education Resource Centre (MFNERC) over the next few years.
- MCHP is building relationships with the public through the initiation of a public engagement strategy. A stakeholder group is sharing ideas and interests so we can evolve a more mutually beneficial relationship.

Building and nurturing relationships has become a fundamental component of MCHP's activity. Noting this, we are grateful for the many that, over the years, have enabled and strengthened the organization.

# Education

MCHP researchers teach a number of courses in Rady College of Medicine. Drs. Dan Chateau, and Alan Katz teach courses in the undergraduate population health program; Drs. Marni Brownell, Malcolm Doupe, Randy Fransoo, Nathan Nickel, Leslie Roos and Noralou Roos all teach graduate courses in Community Health Sciences. MCHP staff support educational and technical tutorials and workshops. We offer online tutorials through our website, and provide workshop materials as well as detailed explanations of structural equation statistical modeling techniques. Charles Burchill also delivers in-person 20-hour SAS tutorials for beginner to intermediate SAS-users.

MCHP researchers are supervising, co-supervising or on committees for 2 post-doctoral fellows, 17 doctoral and 22 Master's students. Over the past year the MCHP Student Engagement Committee has actively worked to grow the MCHP student body and to optimize the graduate school experience for MCHP students. Along with increasing student participation in MCHP research and social activities, we held an MCHP Student Open House in November and an MCHP Student Town Hall in March.

MCHP offers a number of awards to graduate students, including the Evelyn Shapiro Award for Health Services Research and the Roos Prize for Best Publication in Population Health.

## ***Evelyn Shapiro Award for Health Services Research***

Financial support up to \$5,000 is provided through this award to students who are enrolled in the graduate program at the University of Manitoba (preferably in the Faculty of Health Sciences) and whose thesis research uses the Manitoba Population Research Data Repository. To qualify, applicants must demonstrate academic achievement (min. cumulative 3.75 GPA) and show strong research potential in the field of health services. This award was established by the late Dr. Evelyn Shapiro, a renowned health services researcher, and founding member of MCHP, whose contributions include the development of Manitoba's home care program. Winners of this award in 2019 were: Shannon Struck and Margherita Cameranesi.

## ***Roos Prize for Best Publication in Population Health***

The Roos Prize is given to a recent full or part-time graduate student (min. 3.5 GPA) who published a paper incorporating research results using the Manitoba Population Research Data Repository. This prize was created to honour the pioneering work of Drs. Leslie and Noralou Roos in the use of administrative data for research, their extensive publication and knowledge sharing reputations, and their role in the creation of the Manitoba Centre for Health Policy (MCHP). Amani Hamad received the 2019 prize. Her study examines early childhood antibiotics use and autism spectrum disorders using a population-based cohort.



# Managing our Data Repository

Managing the Manitoba Population Research Data Repository and providing current, usable data in compliance with privacy and ethics regulations is our core business at MCHP. In recent years, we have been successful in receiving grants to support the expansion of our data repository. We brought in six new datasets this year:

## Manitoba First Nations Research File

The Manitoba First Nations Research File is a dataset created by the federal government's Indian and Northern Affairs Canada (INAC). It represents a snapshot of individuals who are Registered (also known as Status) First Nations in Manitoba, as of 2016. The file also contains a residence code variable that determines those living on reserve and off reserve. Control and ownership of the file is under the authority of the First Nations Health and Social Secretariat of Manitoba (FNHSSM).

## Public Health Information Management System (PHIMS) – Immunizations

The immunizations component of PHIMS collects information on immunizations and vaccines provided to all Manitobans throughout the province, including the type of immunization (coded and described using SNOMED), service date and provider/location. PHIMS is a replacement for the Manitoba Immunization Monitoring System (MIMS) that was previously used to collect and report immunization data.

## Canadian Neonatal Network (CNN)

The CNN data contains a wealth of clinical and administrative data about services provided in the two neonatal intensive care units (NICU) located at the Health Sciences Centre and St. Boniface Hospital in Winnipeg. The Manitoba data is part of a national database that collects standardized data for NICUs across Canada that allows for collaborative research across the country and internationally.

## Cadham Provincial Labs (CPL) – Laboratory Information Management System (LIMS)

CPL provides public health laboratory services that include Microbiology, Virology, Parasitology, Serology, Newborn Screening, Public Health Chemistry and Quality Assurance. Reference services for identification and typing of microorganisms are available to all medical and veterinary laboratories in the Province. The LIMS database contains patient demographic and laboratory related data on the sample, test performed and the test result.

## Canadian Urban Environmental (CANUE)

A collection of data from the CANUE Health Research Consortium. Contains measures related to the environment and neighborhood / urban living that will be of interest for a wide range of studies investigating the impact of environmental and urban factors on health. The data are categorized as: 1) Air Quality, 2) Greenness, 3) Weather and Climate and 4) Neighborhood. All data are available at the individual Canadian postal code level.

## Winnipeg Fire & Paramedic Services (WFPS) electronic patient care record (ePCR)

The WFPS ePCR is an electronic record that serves as the permanent care report documenting patient condition, treatment, and all associated circumstances pertaining to a WFPS response. In Winnipeg, the system is available in all first responder vehicles. In addition to response and dispatch information, it includes vital signs, assessments, trauma descriptions /scores and all interventions provided.

# Providing Access to Data

Our Repository Access Unit manages and tracks the approval processes for all research projects that make use of the Repository.

The access unit provides support for researchers to navigate the required project approval processes. Our process mapping project showed that researchers and students who attended our accreditation session prior to submitting proposals complete their research projects significantly faster. We have made further time savings for MCHP by working with the Health Research Ethics Board who now send automated reminders and updates for researchers, which is work MCHP previously had to do. This year, 57 people attended accreditation sessions (186 people currently have active accreditation), we reviewed the feasibility of 75 new projects, and set up 40 new Researcher Agreements.

Remote access sites (RAS) enable data analysts and researchers access to the Repository from locations outside of the physical MCHP environment. These sites only provide terminal access to specific applications within MCHP.

## Knowledge Translation

In keeping with our integrated approach to KT, we want to make sure that our research is focused on addressing problems that Manitoba's policy planners and service providers need answers to. Close involvement of policy staff in our project teams and advisory groups helps us to shape the questions early on and keeps our research focused on providing answers that can lead to improvements on the ground.

Our Need to Know Team, led by Dr. Randy Fransoo, with membership from Manitoba Health, Seniors and Active Living, Regional Health Authorities and other partners, has been meeting for more than 15 years, and continues to evolve. This group is essential for planning our interactive workshop days with staff of key organizations in Manitoba.

Over the past year, we have worked hard to communicate beyond our usual contacts, to share the knowledge of the data repository and the potential uses of the data with other faculties and government departments. Our Executive team and MCHP researchers have been busy making presentations to social scientists, environmental scientists and deputy ministers across the provincial government.

This year we also formed our first Public Engagement Group. The group meets regularly and acts in an advisory capacity, working in partnership with MCHP researchers to ensure that the needs and priorities of the public are considered in our research.

### Government and Stakeholder Workshops

MCHP continues its practice of hosting an interactive workshop day with staff of key organizations in Manitoba. These workshops allow detailed discussion of research findings and discussions about their potential implications and application. In September 2018, MCHP hosted its second 'Evidence to Action' Workshop, a single day focused on sharing research with multiple government departments and discussing how it could be used. This is a rare opportunity for staff to share ideas with others from different departments. The day went well and is fast becoming a new annual event.

### Social Media and Publication Tools

Over the past few years, MCHP has been promoting the release of its government research reports using a range of social media and publication tools. This includes making key message graphics to post findings on social media in an easy to share format.

We share public and media friendly infographics through press briefings, our website, Facebook and Twitter.

# People

MCHP is fortunate to have a team of about 50 highly skilled staff who all contribute to the work of the Centre, including:

**Research Scientists** who design and implement research projects, including deliverables for Manitoba Health, Seniors and Active Living and for the Healthy Child Committee of Cabinet, as well as studies funded through peer reviewed research grants. Our research scientists also teach undergraduate and graduate courses and mentor students.

**Research Coordinators** who coordinate deliverable project activities.

**Research Assistants** who are students carrying out a variety of support tasks for research coordinators and our research support team.

**Data, Documentation and Access** team who support the development and use of the Population Research Data Repository

**Data Analysts** who provide data analysis and statistical support for research projects

**Information Technology** specialists who manage all our information technology services within MCHP and for researchers accessing our Remote Access Sites.

**Graphic Designer** who designs layouts for reports, ensures outputs look professional and polished, and creates infographics to support interpretation of data.

**Knowledge Broker** who plans and implements communications and knowledge translation strategies for research projects.

**Finance Grant Accountants** who set up and administer grants, ensure we all get paid on time, and monitor our finances.

**Research Support** who provide administrative, research and clerical support to researchers in the completion of deliverables and peer-reviewed journal articles.

Below is a list of all staff who worked at MCHP at any point between April 1, 2018 and March 31, 2019. Those who joined us during the year or were promoted are listed in *italics*, and those who we said goodbye to are underlined.

## Executive

**Dr. Alan Katz, Director**, Professor, Senior Research Scientist

**Charles Burchill**, Associate Director (Data Access and Use)

**Dr. Marni Brownell**, Associate Director (Research), Professor, Senior Research Scientist

**Dr. Selena Randall**, Associate Director (Planning and Development)

**Mark Smith**, Associate Director (Repository), Research Scientist

**Kara Dyck**, Executive Assistant / Office Manager

**Dr. Mariette Chartier**, Assistant Professor, Research Scientist

**Dr. Dan Chateau**, Assistant Professor, Research Scientist/ Statistician

**Dr. Malcolm Doupe**, Associate Professor, Senior Research Scientist

**Dr. Randy Fransoo**, Assistant Professor, Senior Research Scientist

**Dr. Lisa Lix**, Professor, Senior Research Scientist

**Dr. Alyson Mahar**, Assistant Professor, Research Scientist

**Dr. Nathan C. Nickel**, Assistant Professor, Research Scientist

**Dr. Leslie Roos**, Founding Director, Distinguished Professor, Senior Research Scientist

**Dr. Noralou Roos**, Founding Director, Professor, Senior Research Scientist

**Dr. Chelsea Ruth**, Assistant Professor, Research Scientist

**Dr. Marcelo Urquia**, Assistant Professor, Research Scientist

## Researchers

**Dr. Alan Katz, Director**, Professor, Senior Research Scientist

**Dr. Marni Brownell**, Associate Director, Research; Professor; Senior Research Scientist

**Dr. Elaine Burland**, Research Manager  
**Dr. Jennifer Enns**, Post-doctoral Fellow  
**Dr. Deepa Singal**, Post-doctoral Fellow

## Research Coordinators

**Ruth-Ann Soodeen**, Lead Research Coordinator  
**Ina Koseva**, Research Coordinator  
**Chelsey McDougall**, Research Coordinator  
**Scott McCulloch**, Research Coordinator  
**Farzana Quddus**, Research Coordinator  
**Jennifer Schultz**, Research Coordinator  
**Dale Stevenson**, Research Coordinator

## Data Acquisition

**Say Hong**, Data Management Analyst  
**Sathi Rani Saha**, Data Management Analyst  
**Dave Towns**, Data Acquisition Officer

## Repository Access and Documentation

**Theresa Daniuk**, Repository Access Assistant  
**Kara Dyck**, Repository Access Coordinator  
**Emily Jones**, Repository Access Assistant  
**Ken Turner**, Repository Data Analyst

## Program and Analysis Systems

**Heather Prior**, Lead Data Analyst  
**Alexandrea (Lexy) Anderson**, Data Analyst  
**Wendy Au**, Data Analyst  
**Hui Chen**, Data Analyst  
**Matt Dahl**, Data Analyst  
**Shelley Derksen**, Data Analyst  
**Natalia Dik**, Data Analyst  
**Roxana Dragan**, Data Analyst  
**Oke Ekuma**, Data Analyst & Statistical Consultant  
**Leonard MacWilliam**, Data Analyst  
**Joykrishna Sarkar**, Data Analyst  
**Monica Sirski**, Data Analyst  
**Angela Tan**, Data Analyst  
**Carole Taylor**, Data Analyst  
**Randy Walld**, Data Analyst  
**Marina Yogendran**, Data Analyst

## Graphic Design and Communications

**Cara Jonasson**, Graphic Designer  
**Jennifer Pepneck**, Knowledge Broker

## Information Technology

**Rod McRae**, Information Technology Manager  
**Darrin Halabuza**, Information Technology Support

## Finance

**Sophie Buternowsky**, Senior Grants Accountant  
**Ariel Bautista**, Grants Accountant  
**Jeannie Chen**, Grants Accountant

## Research Support

**Eileen Boriskewich**, Research Support

## Research Assistants

**Susan Burchill**, Research Assistant  
**Jessica Jarmasz**, Research Assistant  
**Nkiru Eze**, Research Assistant



# Financial Report

MCHP is generously supported by Manitoba Government through a five-year funding agreement with Manitoba Health, Seniors and Active Living (MHSAL). The budget given below shows how we spend these funds. In addition to the \$2,325,000 received from MHSAL, MCHP researchers secure funding from individual and multi-project grants and career awards. MCHP also generates revenue in the form of repository access and remote access fees paid by externally administered research grants. In 2018/19, new funds from these sources totaled approximately \$5.6M.

## Manitoba Centre for Health Policy Budget (Manitoba Health, Seniors and Active Living)

April 1, 2018 – March 31, 2019

### Salaries

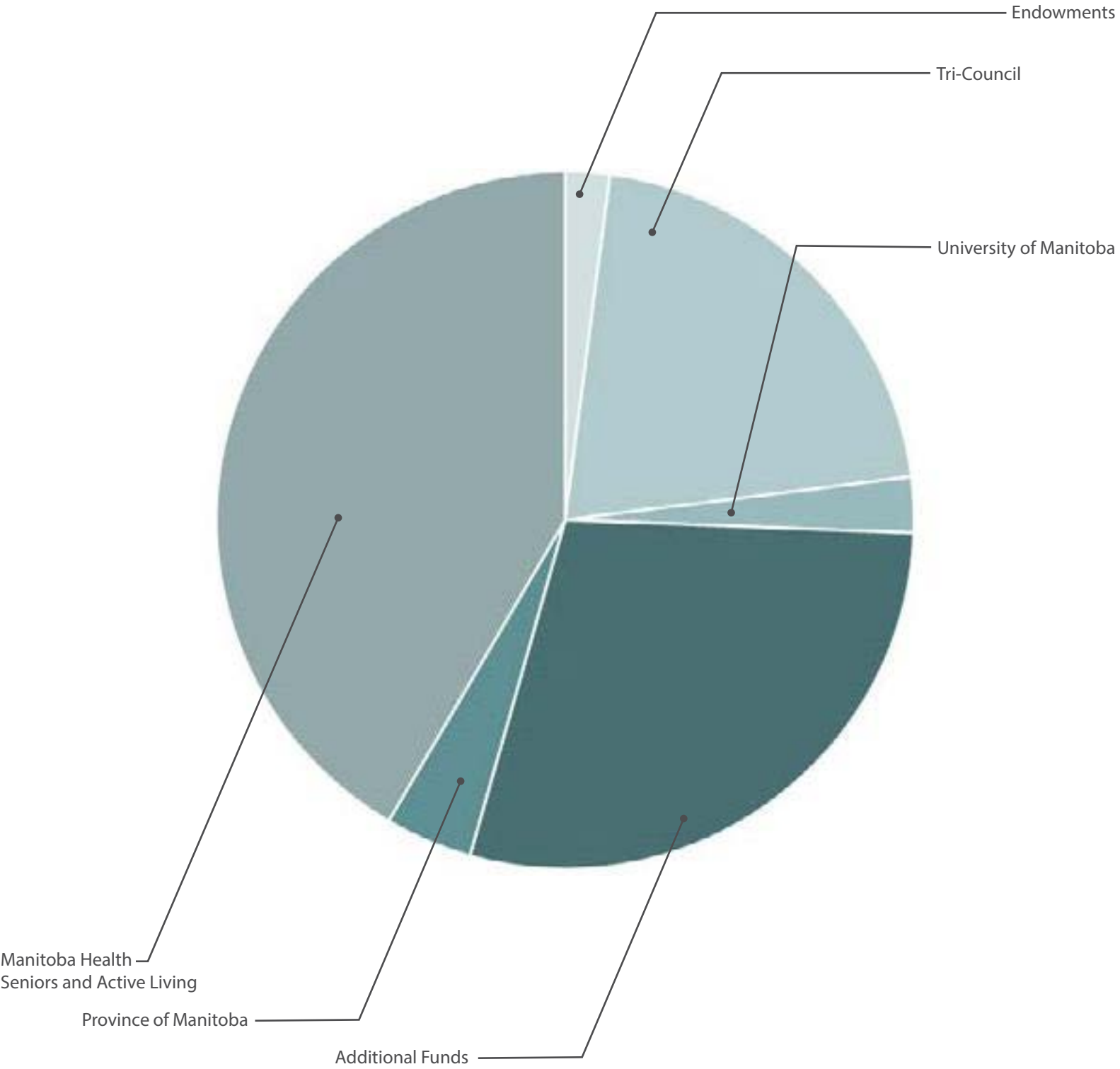
Staff	1,763,190.87
Staff Benefits	326,616.97
Payroll Levy	42,049.20
External Contracts	3,239.60
<b>Salaries Subtotal</b>	<b>\$2,135,096.64</b>

### Other Expenditures

General Office Expenses	100,596.70
Equipment Purchases	23,946.09
Equipment Maintenance	57,701.55
Travel	7,659.02
<b>Other Expenditures Subtotal</b>	<b>\$189,903.36</b>

<b>Total Expenditures</b>	<b>\$2,325,000.00</b>
---------------------------	-----------------------

MCHP Funding Sources



# Advisory Board

MCHP is supported by an advisory board representing:

- MCHP
- Seven members appointed by Manitoba Health, Seniors and Active Living (deputy ministers from departments sharing data with us)
- Seven members appointed by University of Manitoba (university administrative staff and external advisors).

The advisory board meets twice a year to hear about the Centre's activities and to provide advice on areas of development for the Centre.

Below, are the current members of the Advisory Board, we thank departing members Dr. Stephen Moses, Angie Bruce, Julie Fredrickson, Bramwell Strain, Dr. Randy Fransoo and Shannon Turczak for their service to the Advisory Board over the past few years.

## Members by Position:

- Dr. Peter Nickerson (Board Chair): Vice-Dean Research, Rady Faculty of Health Sciences, University of Manitoba
- Dr. Alan Katz: Director of the Manitoba Centre for Health Policy
- Ms. Karen Herd: Deputy Minister of Health, Seniors and Active Living
- Drs. Noralou Roos and Leslie Roos: Founding Directors
- Dr. Brian Postl: Dean of the Rady Faculty of Health Sciences, University of Manitoba

## Appointed Members:

Up to seven appointees of Manitoba Health Seniors and Active Living, Seniors and Active Living

1. Mr. Dave Wright, Deputy Minister, Justice and Deputy Attorney General
2. Mr. Jay Rodgers, Deputy Minister, Families
3. Mr. David Dyson, Deputy Minister, Growth, Enterprise and Trade
4. Mr. Jim Slater, Provincial Lead, Health Support Services and COO, Shared Health
5. Dr. Rob Santos on behalf of Mr. James Wilson, Deputy Minister, Education and Training, & Indigenous Relations
6. Mr. Jim Hrichishen, Deputy Minister, Finance
7. Mr. Scott Sinclair, Acting Deputy Minister, Infrastructure

## Appointed Members:

Up to seven appointees of the University of Manitoba

1. Dr. David Collins, Vice Provost of Integrated Planning and Academic Programs, University of Manitoba
2. Dr. Digvir Jayas, Vice President of Research and International, University of Manitoba
3. Dr. Terry Klassen, Academic Director, George and Fay Yee Centre for Healthcare Innovation
4. Mr. Reg Toews, Member of the Community
5. Ms. Connie Walker, President and CEO, United Way of Winnipeg
6. Mr. Réal Cloutier, Acting President and Chief Executive Officer, Winnipeg Regional Health Authority
7. Dr. Michael Schull, President and CEO, Institute for Clinical Evaluative Sciences

## Ex Officio Members:

- Ms. Deborah Malazdrewicz, Executive Director of Information Management & Analytics, MHSAL
- Mr. Dan Skwarchuk, CFO & ADM, Administration & Finance, MHSAL
- Dr. Marni Brownell, Associate Director of Research, MCHP
- Dr. Selena Randall, Associate Director of Planning and Development, MCHP
- Mr. Mark Smith, Associate Director of Repository, MCHP
- Mr. Charles Burchill, Associate Director of Data Access and Use, MCHP

## MCHP Staff Support to Advisory Committee

- Ms. Kara Dyck, Executive Assistant



