



Annual Report 2019-20

Manitoba Centre for Health Policy

Data | Insight | Informing Solutions



**University
of Manitoba**

Rady Faculty of
Health Sciences

Contents

Highlights of MCHP Activities for 2019-20	1
Director's Message.....	2
About the Manitoba Centre for Health Policy	3
Mission and Objectives.....	4
In Focus.....	5
Research at MCHP.....	6
Education	11
Managing our Data Repository.....	12
Providing Access to Data.....	13
Knowledge Translation.....	13
People.....	14
MCHP Funding Sources.....	16
Advisory Board.....	17

Highlights of MCHP Activities for 2019-20

In Numbers

146

Publications



10

Public Engagement
Group members

3

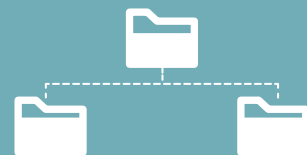
Post-doctoral
Fellows

19

PhD
Students

24

MSc
Students



Manitoba Population
— Research Data —
Repository supports

292

Studies

18

MSc
Theses

17

PhD
Theses

Director's Message

As we enter our 30th year, the MCHP staff and leadership need to look back on where we came from and where we are going. Are we addressing our mission and are our activities moving us towards the achievement of our vision? What else do we need to do for us to achieve that vision? The following pages of this report present the evidence of a high functioning organization that is successfully evolving as it works to address its mission.

As I write this I cannot ignore the current challenges we face. The details of how we are coping with the COVID-19 pandemic and the social turmoil in North America with the belated and almost universal recognition of the prevalence of systemic racism in our society will be in next year's report.

The graphic of the MCHP mission, vision and values accurately reflects the three pillars that support our work. The uniquely data rich repository continues to grow and provide the raw material for our talented analysts and researchers to provide the information to support our knowledge translation activities. Maintaining a current data repository requires ongoing relationships with data providers. We appreciate the willingness of those providers to share their data with us and value our relationships with them. We have begun a review of our current repository technology structure to ensure that we can support new analytic techniques as they become available.

This report provides ample evidence of the success of MCHP core scientists in generating research support from peer reviewed funding agencies. We have an outstanding team of scientists whose work leads to high quality publications. Our scientists have continued to build on our positive relationships with the First Nations Health and Social Secretariat of Manitoba and the Manitoba Metis Federation to ensure that we meet the highest ethical standards when studying the health and wellbeing of Manitoba's Indigenous communities.

The Manitoba health care system has continued on its journey of transformation over the past year. This provides new opportunities for knowledge translation. MCHP is committed to supporting research that will improve the lives of Manitobans, as well as those beyond our borders. We look forward to working with both policy makers and system leaders as our health care system changes.

Our ability to support comparative research with those in other Canadian jurisdictions has been improved with our involvement in Health Data Research Network Canada, and its Canadian Institutes for Health Research (CIHR) funded initiative, the SPOR-Canadian Data Platform.

Finally, I am grateful for the opportunity to work with the outstanding MCHP team. My ability to perform my role has benefitted immeasurably by the support of an outstanding executive team, a strong committed leadership group, and highly engaged staff.



Dr. Alan Katz MBChB, MSc, CCFP, FCFP

Director

“I am grateful for the opportunity to work with the outstanding MCHP team.”

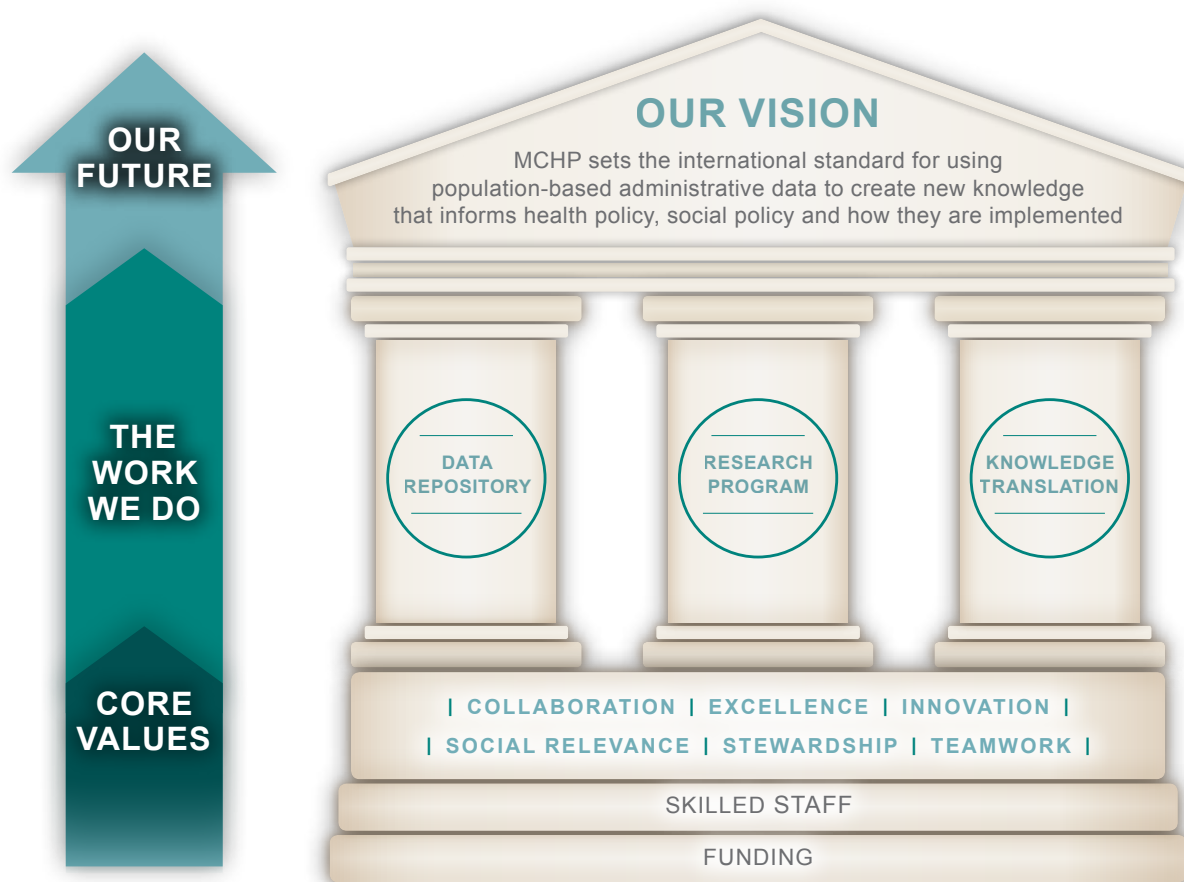
About the Manitoba Centre for Health Policy

What makes Manitobans healthy? The Manitoba Centre for Health Policy (MCHP) is a research unit within the Department of Community Health Sciences, Max Rady College of Medicine, Rady Faculty of Health Sciences at the University of Manitoba. Our work focuses on the health and the determinants of health of Manitobans. The Centre was set up in 1990 to manage a Population Data Repository and to use it for research into how factors like healthcare, health programs and policies impact health outcomes.

The Manitoba Population Research Data Repository is a comprehensive collection of administrative, registry, survey, and other databases primarily comprising residents of Manitoba. It was developed to describe and explain patterns of healthcare and profiles of health and illness, and, more recently, to facilitate inter-sectoral research in areas such as healthcare, education, and social services. The administrative health database,

for example, holds records for virtually all contacts with the provincial healthcare system (the Manitoba Health Services Insurance Plan), including physicians, hospitals, personal care homes, home care, and the pharmaceutical prescriptions of all registered individuals.

The Repository data are de-identified. Research is subject to a rigorous approval process to ensure compliance with the Personal Health Information Act and other applicable legislation. MCHP provides the infrastructure to support researchers' access to the data and analytic services. MCHP has approximately 50 full-time staff: researchers, data managers, data analysts, research coordinators and support staff. Our researchers benefit from collaboration with peers across Canada, the United States, Europe, and Australia. We also have an advisory board bolstered by high-profile representatives from research, healthcare, business, and government. MCHP acts as a steward of the data.



Mission and Objectives

The University of Manitoba's mission is *to create, preserve, communicate and apply knowledge, contributing to the cultural, social and economic well-being of the people of Manitoba, Canada and the world*. MCHP works within the 'Integrative Research in Health and Well-being' theme within the University of Manitoba's Strategic Research Plan, and is a key component of the signature area on 'Population and Global Health'.

Our strategic objectives, detailed in our strategic operational plan, cover the following areas:

1

To maintain and enhance a population-based data repository (Repository) that meets the needs of researchers, graduate students, and analysts in a privacy-compliant environment;

2

To advance the research capacities of the Centre and its affiliated researchers, to support research which is relevant, and uses the most appropriate methodologies;

3

To integrate knowledge translation within our work, to measure the impact of our research on policy and practices, and engage the public in our research, where relevant;

4

To maintain the strong foundation needed for a centre of excellence by securing adequate funding, supporting skilled staff, and being accountable for our funding.

In Focus

At MCHP we have a number of researchers who use the rich administrative data in the Manitoba Population Research Data Repository to research aspects of child health and development. These researchers are highly successful and currently hold more than \$3.3 million in research grants and awards collectively. Some examples of what they are currently working on are included here.

Child Development

Leveraging Linked Administrative Data to Advance FASD Research and Inform Evidence Based Policy in Manitoba and Beyond

is a study led by Dr. Marni Brownell. It was developed in partnership with Healthy Child Manitoba with the objective of using the Population Research Data Repository held at MCHP to 1) evaluate the Manitoba government's FASD strategy and determine the success of reducing the incidence of alcohol consumption during pregnancy; and, 2) describe the burden of physical and mental health co-morbidities experienced by individuals with FASD with the aim of guiding clinical management of FASD in pediatric and primary care settings.

Neonatal and Childhood Neurodevelopment, Health and Educational Outcomes of Children Exposed to Antidepressants and Maternal Depression During Pregnancy.

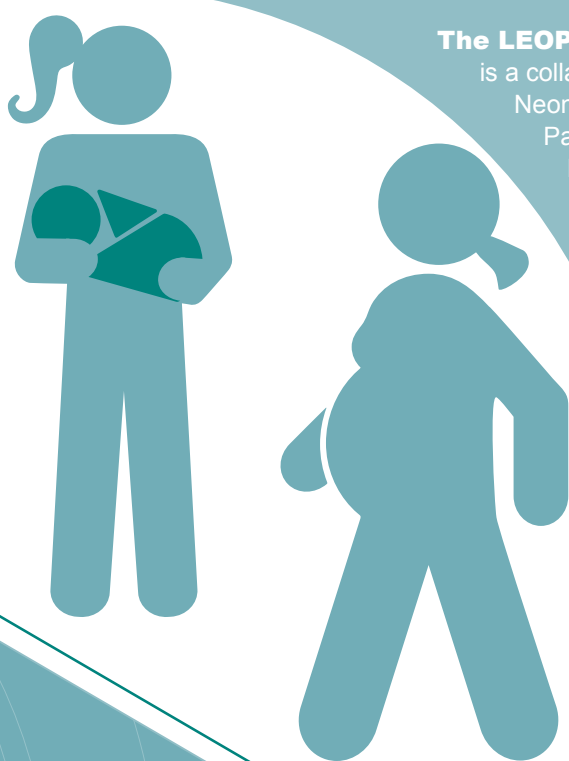
This study, led by Drs. Marni Brownell, Dan Chateau and Deepa Singal is examining neonatal health, early childhood physical and mental health, and educational outcomes for children whose mothers took antidepressants during pregnancy. The population-wide data held at MCHP has allowed us to generate a comparison group of children whose mothers were diagnosed with depression during pregnancy but who did not take antidepressants. Results provide clinicians and their patients' information on which to base decisions about antidepressant use during pregnancy.



Antenatal, Newborn and Maternal Health

Maternal and Newborn Perinatal Outcomes of Girls aged <18

is a project led by Dr. Marcelo Urquia that aims to quantify the prevalence and distribution of child marriage and its associations with adverse perinatal outcomes, based on nationwide Canadian data and from other countries.



The LEOPARD study led by Dr. Chelsea Ruth is a collaborative study between Perinatology, Neonatology and Developmental Paediatrics which is building a multi-year birth based cohort to look at the effects of antenatal, perinatal and early life risk and protective factors on educational outcomes and child development. It is in the early stages of cohort formation with three study questions ready to go looking at the effects of antenatal steroids, complex congenital heart disease and gestational age at birth on our outcomes.

Indigenous Child Health and Development

Dr. Marni Brownell is leading a program of research called **STRENGTH: SupportiNg Resiliency in iNdiGenous child HeaTH** and development

In this program of research we are partnering with researchers from the First Nations Health and Social Secretariat of Manitoba to evaluate the Healthy Baby program for First Nation women and their infants, and with the Manitoba First Nations Education Resource Centre to evaluate full-day kindergarten, Boys & Girls Club of Winnipeg programs, and Roots of Empathy for First Nation children. We are also partnering with researchers from the Manitoba Metis Federation to evaluate home visiting programs, and early childhood and school-based programs for Metis children and families.

PAX-Good Behavior Game (PAX) in First Nations Communities: Enhancing and Adapting a School-Based Mental Health Promotion and Suicide Prevention Strategy

is an evidence-based, childhood mental health promotion strategy that creates a nurturing school environment for children and has been shown to decrease suicidal ideation and attempts. With Swampy Cree Tribal Council communities, Dr. Mariette Chartier's research team aims to understand how PAX is working from First Nations perspectives in order to adapt and enhance it to be culturally grounded in their values, beliefs and traditions. With this knowledge, adaptations were made to improve the implementation of the PAX program in First Nations communities. Using data linkage to administrative data as well as interviews and focus groups, evaluation of these adaptations are ongoing

Partnering with researchers Dr. Marni Brownell's team has evaluated the Families First Home Visiting Program for First Nation children and families living off-reserve and is currently evaluating the Strengthening Families-Maternal Child Health Home Visiting Program for First Nation children and families living on reserve, in a project known as **ENVISION: EvaluatiNg home VISiting InterventiONs in First Nation families**.

Towards Flourishing (TF): Improving the Mental Health among Families in the Manitoba Families First Home Visiting Program

is an innovative mental health promotion strategy that focuses on improving the mental well-being of mothers and their infants in the postpartum period. TF has yet to be evaluated and so there remains a paucity of evidence on whether it is effective at improving maternal and child outcomes and whether further investment is warranted. Thus, in this study, Dr. Mariette Chartier's team will determine the effectiveness of TF by examining the health and social outcomes of mothers and infants who received TF by using data linkage to administrative data.

Dr. Nathan Nickel is leading a team to study **REMAIN: REsilience after MAternal INcarceration: A Whole-Population Administrative Data Cohort Study of Children whose Mothers Experienced Incarceration**. This study brings together researchers from the First Nations Health and Social Secretariat, the Manitoba Metis Federation, and the Manitoba Centre for Health Policy to understand children's outcomes after their mother is incarcerated. This study is looking at the experiences of First Nations and Metis families separately, adopting a distinctions based approach. We aim to identify factors that support success and positive outcomes for these children.

Dr. Marni Brownell is leading research that is **Quantifying Social Disparities in Youth Justice System Trajectories - Evidence to Inform Policy Change**. Partnering with researchers from FNNHSSM and from MMF, this project is exploring whether more severe and/or frequent penalties are applied to Indigenous youth as they move through the justice system. We are following several cohorts of youth charged with crimes through six separate decision points in the justice system; at each decision point we will compare rates of outcomes (e.g., charge proceeds vs. charge does not proceed) among First Nation and non-First Nation youth, and separately compare Metis youth and non-Metis youth.



Research at MCHP

MCHP carries out two different types of research using the Manitoba Population Research Data Repository: contracted research for agreed deliverables and grant funded research.

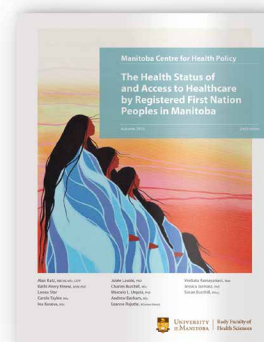
Contracted research

MCHP is contracted to work on five deliverables each year for Manitoba Health, Seniors and Active Living (MHSAL) which take on average approximately two years to complete, and result in published reports and peer-reviewed publications. Over the past year, we released the three government deliverables, discussed below. MCHP researchers lead these projects, with input from clinicians, policy makers, and other partners as coinvestigators or on advisory groups. This engagement has enriched the reports we produce.

The Health Status of and Access to Healthcare by Registered First Nation Peoples in Manitoba

Katz A, Avery Kinew K, Star L, Taylor C, Koseva I, Lavoie J, Burchill C, Urquia M, Basham A, Rajotte L, Ramayanam V, Jarmasz J, Burchill S

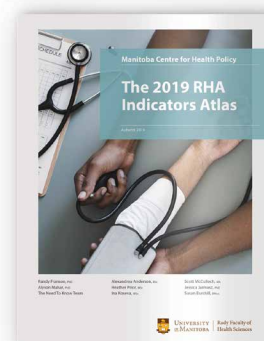
This deliverable was the product of a strong and developing relationship between MCHP and the First Nations Health and Social Secretariat of Manitoba. It looked at health and healthcare use patterns of First Nations people living in Manitoba. The analyses provided comparisons between First Nations and all other Manitobans, comparisons between on and off reserve First Nations, and regional comparisons by Regional Health Authority and by Tribal Council Areas. It was the first study to use the Regional Health Survey which includes on-reserve First Nation peoples. The results demonstrate the widening gap between the health of First Nations and all other Manitobans and point to inequities in service provision.



The 2019 RHA Indicators Atlas

Fransoo R, Mahar A, The Need to Know Team, Anderson A, Prior H, Koseva I, McCulloch S, Jarmasz J, Burchill S

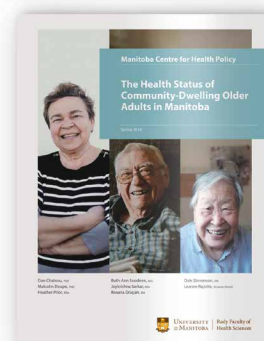
All Regional Health Authorities in Manitoba worked together to complete the 2019 cycle of comprehensive community health assessment reports. To produce their reports, the RHAs required region- and district-specific data on a range of key indicators of health status and health care use. This deliverable updated and refined key indicators from the 2013 RHA Atlas and incorporated new indicators from other reports, including a number of indicators of maternal and child health.



The Health Status of Community-Dwelling Older Adults in Manitoba

Chateau D, Doupe M, Prior H, Soodeen RA, Sarkar J, Dragan R, Stevenson D, Rajotte L

This report focused on the health status and health care use patterns for community-dwelling older adults in Manitoba (i.e., not a resident of a nursing home). Using both health system data and self-report data from the Canadian Community Health Survey, a large number of indicators were examined that addressed physical health and wellbeing, mental health status, health care use, drug use, and numerous social indicators (e.g., living in social housing, receipt of income assistance, victim of crime). The baby boom generation have started to become



senior citizens, and this report looked at the changes they may have brought with them to the population of older adults. The youngest of the older adults (age 65-74) saw a dramatic growth in size during the study period (2005-2014), boosting the population of older adults in Manitoba by over 20,000 in just five years. Above and beyond the increased demand on services that would be expected from population growth, we can expect changes in the health status of this population, and in how older Manitobans might interact with the health care system. Results were reported by three age groups (65-74, 75-84, 85+), and at regional and sub-regional levels. This will allow planners and all Manitobans to understand what is happening at a local level, and to focus primary care resources and other services and resources to meet the changing demands of this population.

Quick Turn-around Projects

In addition to deliverables for MHSAL, over the past two years, MCHP analysts have supported Government of Manitoba to access and analyse their own datasets to support policy analysis and program decision-making. This work has supported programs delivered by departments of Education, Families and Justice, as well as supporting the development of new methods which will be useful for future research, but this area of work does not result in published reports.

Industry-funded Research

Over the past three years, MCHP has developed processes to support research using the Manitoba Population Research Data Repository to support industry-funded research. These projects involve some analyses and support to researchers on interpreting the data findings. These projects look at treatment patterns, prevalence of conditions, and more.

Annual Direct Burden of Illness for Heart Failure in Manitoba, Canada (Dr. Alan Katz)

Administrative Database Analysis of Ambulatory and Inpatient Care.

Determining Immunization Coverage and Burden of Vaccine Preventable Diseases among Children of Refugees and Migrants in New Zealand and Manitoba (Dr. Alan Katz)

Comparing children's immunization status in Canada and New Zealand between children born to mothers born in Canada (NZ), mothers who are immigrants and children who immigrated to Canada (NZ) before age 5.

Grant-funded research

Our researchers are also highly successful in getting grants for their own individual programs of research, and they (and their students) have published 146 peer-reviewed publications this year (23 as first author) and contributed to more than 12 presentations (6 as first author/presenter).

Researchers at MCHP carry out research into the health and well being of Manitobans across a broad spectrum of issues, funded through a variety of sources including federal and provincial funding bodies, foundations and research trusts.

Pan-Canadian

- **Canadian Network for Observational Drug Effect Studies (CNODES) (Dr. Dan Chateau)**, a network of more than 100 scientists study the safety and effectiveness of medications using administrative data, and provide evidence for policy-makers, healthcare providers, regulators and patients.
- **Prevalence and Social Determinants of Developmental Outcomes Among 5-Year Old Children with Health Disorders: A Pan Canadian Study (Dr. Marni Brownell)** Using comparable information from three provinces (Manitoba, Ontario, BC), this study is examining the developmental outcomes at school entry for children with any of seven of the most common health disorders in childhood, and the interplay between socioeconomic status and developmental outcomes.
- **Evaluating Older Adult Care Continuums in Alberta and Manitoba: A comparative Analysis (Dr. Malcolm Doupe)** Older people are the main users of publicly funded care continuums comprised of home care, various types of community-based housing with health services care options (called supportive housing in this research), and nursing homes. This research compares the strengths and weaknesses of care models in Manitoba and Alberta.
- **Does Primary Care Reform Make a Difference? (Dr. Alan Katz)** Cross jurisdictional study linking administrative and international survey data. We will compare the reforms in different jurisdictions and the associated outcomes in each jurisdiction (Ontario, BC, MB).
- **assets in community-based primary and integrated health care, to foster a new alliance between research, policy and practice to create dynamic and responsive learning systems across the country that develop, evaluate and scale up new approaches to the delivery services.** Dr. Alan Katz is the research lead in the Manitoba network.
- **The SPOR Canadian Data Platform, network of data and research centers**, aims to unlock the potential of Canada's unique data assets and expertise to address the most pressing health research challenges facing the public and policymakers, was funded in 2019 after many years of development, from an idea spawned in MCHP. It is pioneering a single stop for researchers to request access to health and social data from a variety of sources across the country. Dr. Alan Katz serves on the executive and Dr. Lisa Lix leads the data Harmonization initiative of the platform.
- **Assessing Emergency Department-to-Home Transitions for Frail Older Adults (Dr. Malcolm Doupe)** An international team of researchers, doctors, health system planners, and patients will identify promising practices to support frail older adults in the community after visits to Emergency Departments.
- **iSTEP: An International Student Training and Exchange Project in Transitional Care (Dr. Malcolm Doupe)** This collaboration between Norway and Canada will give students the skills to help improve these transitions between nursing homes (NH) and emergency departments (ED) &/or hospitals (H) (i.e., NH ↔ ED/H).
- **iNET: An International Network to Enhance Older Adult Transitions between Emergency Departments & Communities (Dr. Malcolm Doupe)** iNET will enhance older adult transitions between emergency departments (EDs) and communities by establishing a world-leading network of academics and healthcare stakeholders (e.g., decision-makers & providers) from Norway and Canada.

Building Networks

- **The pan-Canadian SPOR Network in Primary and Integrated Health Care Innovations** is a key CIHR initiative under the Strategy for Patient-Oriented Research and the Community-Based Primary Health Care Signature Initiative. It is a Network of networks that builds on regional and national

Social Science Research

- **SPECTRUM** (Social Policy Evaluation Collaborative Team Research at Universities in Manitoba). The goal of SPECTRUM is to establish a collaborative partnership that will build research capacity amongst participants for conducting social policy research and evaluation.
- **STRENGTH: SupportiNg Resiliency in iNdiGenous child Health and development (Dr. Marni Brownell)** is a partnership with First Nation, Metis and local social and educational partners to evaluate home visiting programs, and early childhood and school-based programs for Metis children and families.

Health Inequities

- **Understanding the Burden and Outcomes of Cancer for Canadians Living with Intellectual and Developmental Disabilities (Dr. Alyson Mahar)** The goal of this project is to determine whether or not Canadians living with intellectual and/or developmental disabilities (IDD) are more likely than Canadians who do not have IDD to be 1) diagnosed with cancer; 2) diagnosed with incurable cancer; 3) not receive the right cancer treatment; and 4) to die of their cancer.
- **Addressing Gender-Based Health Inequities Among Children and Youth in Immigrant Families in Manitoba (Dr. Marcelo Urquia)** This project aims to identify whether there are sex differences in developmental outcomes among children and youth in various immigrant groups.

Children

Research into the health and wellbeing of children is a big area of research at MCHP, involving multiple researchers. For more information, see our 'In Focus' page 5.

Health Inequities

- **Understanding the Burden and Outcomes of Cancer for Canadians Living with Intellectual and Developmental Disabilities (Dr. Alyson Mahar)** The goal of this project is to determine whether or not Canadians living with intellectual and/or developmental disabilities (IDD) are more likely than Canadians who do not have IDD to be 1) diagnosed with cancer; 2) diagnosed with incurable cancer; 3) not receive the right cancer treatment; and 4) to die of their cancer.

Family Medicine

- **A Retrospective Review of Membership within the Wellness Institute and Reh-Fit Centre's Medical Fitness Model (Dr. Alan Katz)** Comparing health outcomes of members of the two medical fitness centres with matched controls using administrative data.
- **The BedMed Initiative - Making Better Use of Existing Therapies (Dr. Alan Katz)** Using administrative data to monitor health outcomes of patients in a clinical trial comparing patients who take anti-hypertensive medication at bedtime vs in the morning.

Older Adults

- **Evaluating Subacute Care Hospital Transitions for Older Adults: Understanding How, Why, and for Whom a Planned Intervention Works (Dr. Malcolm Doupe)** A team of expert researchers has partnered with planners in charge in this process and with patients who have been through a new type of subacute care to rehabilitate frail older adults after hospital admission before release home, to study how it is working.
- **Using Evidence to Inform Health Policy: Supportive Housing as a Case Study (Dr. Malcolm Doupe)** This study will investigate how evidence can be used to enhance supportive housing policies in Manitoba to ensure that Manitobans use supportive housing and nursing homes appropriately and at the right time in their lives.

Data Quality, Data Use, Developing New Analytical Methods

- **Accuracy of Risk Factor Diagnoses in Administrative Health Databases (Dr. Lisa Lix)** This validation study will investigate misclassification biases in health risk factor diagnoses in administrative databases for diagnoses of obesity and chronic obstructive pulmonary disease (COPD) as a proxy measure of smoking in Manitoba by evaluating the validity of the ICD diagnosis codes from hospital discharge abstracts and physician billing claims.
- **Evaluating the Coverage and Comparability of Electronic Health Data for Chronic Disease Research and Surveillance (Dr. Lisa Lix)** This research aims to compare the assess how representative the populations captured in electronic medical records (EMRs) are to the Manitoba population and compare behavioral risk factors and chronic health conditions measured in EMRs with those measured in administrative health data to assess their comparability.

- **Harnessing Population-Based Electronic Healthcare Records to Construct Family Health Histories for Accurate Disease Risk Prediction and Heritability Estimation (Dr. Lisa Lix)** The research purpose is to measure lifetime chronic disease histories for parents and their offspring using record linkage techniques and test the utility of these lifetime histories for predicting disease risk and estimating disease heritability.
- **Comparing hospitalization rates, outcomes, and treatment intensity for elderly patients across OECD countries (Dr. Lisa Lix)** The purpose of this study is to compare treatment and outcomes for older adults (>66 years) from 5 OECD countries (US, Canada (two provinces), Netherlands, Israel and England) hospitalized with one of five conditions: 1) hip fracture, 2) acute myocardial infarction, 3) ischemic stroke, 4) elective abdominal aortic aneurysm repair, and 5) congestive heart failure.
- **A Data Infrastructure for Monitoring the Impact of Cannabis Legalization: Data Collection and Linkage Strategies to Inform Health and Social Policy (Dr. Nathan Nickel)** This study is validating a data collection tool that will record cannabis use information among Manitoba residents. This information can be linked with the administrative data housed in the repository for future research projects examining the health and social outcomes associated with legalizing non-medical cannabis use.
- **Identification of Frailty Using Administrative and Electronic Medical Records Data (Dr. Alan Katz)** We are linking EMR and administrative data trying to develop a definition of frailty for the administrative data using Machine learning
- **Beyond Structured Administrative Data project (BEST DATA) (Dr. Alan Katz)** Exploring the use of Natural Language Processing to analyze free text that is recorded in Electronic medical records.
- **Derivation of risk prediction models and a computer microsimulation model in type 2 diabetes (Dr. Alan Katz)** Using Manitoba data to validate the prediction models developed in Ontario
- **Implementation of the Risk Factor Identification Tool (RFIT) (Dr. Alan Katz)** Testing an algorithm based tool for patients to identify their behavioral health risk factors which is then uploaded into the EMR in family practice clinics.



Education

MCHP researchers teach a number of courses in Rady College of Medicine. Drs. Dan Chateau, and Alan Katz teach courses in the undergraduate population health program; Drs. Marni Brownell, Malcolm Doupe, Randy Fransoo, Nathan Nickel, Leslie Roos and Noralou Roos all teach graduate courses in Community Health Sciences. MCHP staff support educational and technical tutorials and workshops. We offer online tutorials through our website, and provide workshop materials as well as detailed explanations of structural equation statistical modeling techniques. Our data analysts also deliver in-person 20-hour SAS tutorials for beginner to intermediate SAS-users.

MCHP researchers are supervising, co-supervising or on committees for 2 post-doctoral fellows, 19 doctoral and 24 master's students. Over the past year the MCHP Student Engagement Committee has actively worked to build the MCHP student body and to optimize the graduate school experience for MCHP students. Along with increasing student participation in MCHP research and social activities, we held an MCHP Student Open House in November and an MCHP Student Town Hall in March.

MCHP offers a number of awards to graduate students, including the Evelyn Shapiro Award for Health Services Research and the Roos Prize for Best Publication in Population Health.

Evelyn Shapiro Award for Health Services Research

Financial support up to \$5,000 is provided through this award to students who are enrolled in the graduate program at the University of Manitoba (preferably in the

Faculty of Health Sciences) and whose thesis research uses the Manitoba Population Research Data Repository. To qualify, applicants must demonstrate academic achievement (min. cumulative 3.75 GPA) and show strong research potential in the field of health services. This award was established by the late Dr. Evelyn Shapiro, a renowned health services researcher, and founding member of MCHP, whose contributions include the development of Manitoba's home care program. Winners of this award in 2020 were: Susan Burchill for her research on the role music education plays on the educational attainment and mental health of adolescents; Janelle Boram-Lee for her research on the developmental outcomes of children whose mothers have been victims of partner violence; George Okoli for his research on the factors affecting seasonal influenza vaccine uptake; and Krista Wilkinson for her research looking at pertussis vaccine effectiveness in Manitoba.

Roos Prize for Best Publication in Population Health

The Roos Prize is given to a recent full or part-time graduate student (min. 3.5 GPA) who published a paper incorporating research results using the Manitoba Population Research Data Repository. This prize was created to honour the pioneering work of Drs. Leslie and Noralou Roos in the use of administrative data for research, their extensive publication and knowledge sharing reputations, and their role in the creation of the Manitoba Centre for Health Policy (MCHP). Krista Wilkinson received the 2020 prize, for her research into pertussis vaccine effectiveness in Manitoba.



Susan Burchill Thesis Proposal

Managing our Data Repository

Managing the Manitoba Population Research Data Repository and providing current, usable data in compliance with privacy and ethics regulations is our core business at MCHP. In recent years, we have been successful in receiving grants to support the expansion of our data repository.

Over the past year we have added some new datasets to the Manitoba Population Data Repository. When we bring data in, there is a lot of preparatory work to be done before data are ready for use by our analysts, researchers and students accessing the Repository. Our data management experts carry out a data quality check, compile a user manual and develop knowledge of the content of the new data.

Winnipeg Fire & Paramedic Services (WFPS) electronic patient care record (ePCR)

The WFPS ePCR is an electronic record that serves as the permanent care report documenting patient condition, treatment, and all associated circumstances pertaining to a WFPS response. In Winnipeg, the system is available in all first responder vehicles. In addition to response and dispatch information, it includes vital signs, assessments, trauma descriptions /scores and all interventions provided.

Children's disABILITY Services (CDS) and Community Living disABILITY Services (CLDS)

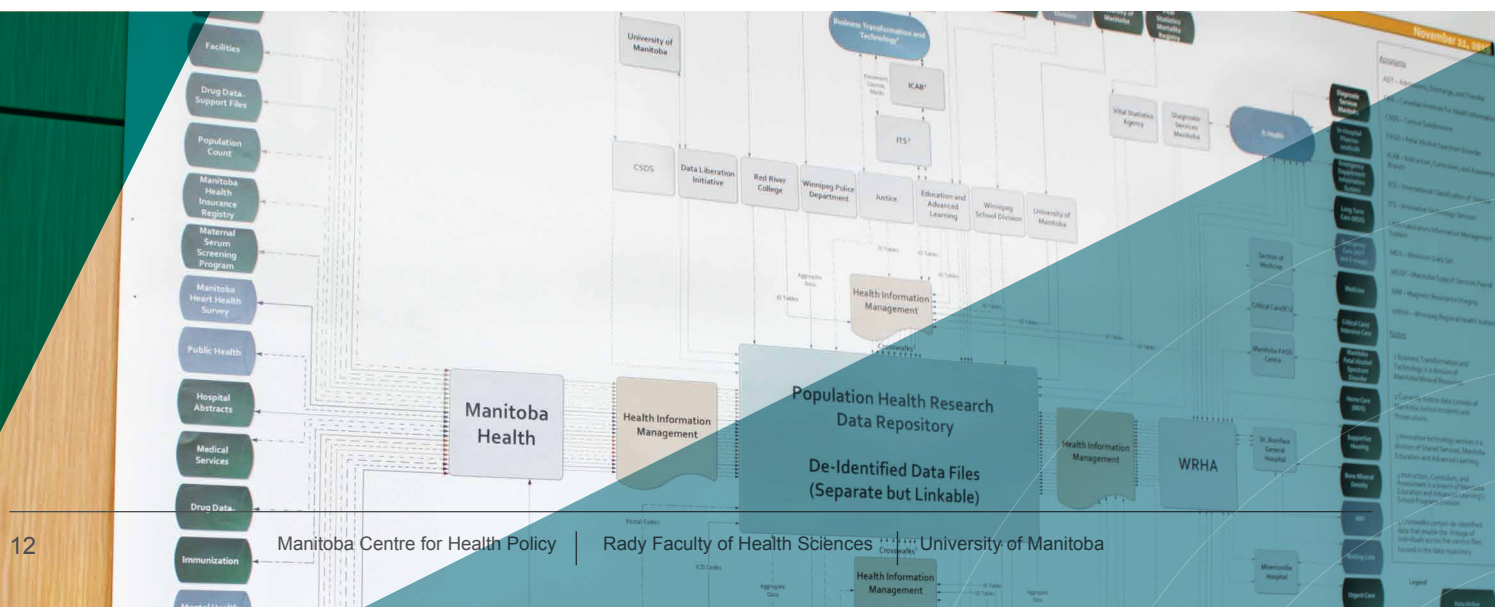
Children's disABILITY Services offers a variety of resources and supports to parents to assist them to care for their children at home in their own communities, where children grow and thrive.

Community Living disABILITY Services supports eligible adults with intellectual disabilities in Manitoba to live good and satisfying lives in their communities.

Data from both of these programs provides personal and family demographics, individual abilities assessment, family assessment, support programs/services being provided, plan related payment details, other government related programs being received, eligibility results, and other evaluation details.

IRCC Immigration Data (Immigration, Refugees and Citizenship Canada)

The Immigration data contain information on immigrants to Canada who become permanent residents. The data come from the Immigration, Refugees and Citizenship Canada (IRCC) Permanent Residents system. The type of immigration data in the files includes: demographic data (e.g. birth date, sex, marital status, language spoken); country of birth, country of citizenship and country of residence data; education level; occupation data; admission category (derived from existing variables); and landing date / age at landing information.



Providing Access to Data

Our Repository Access Unit manages and tracks the approval processes for all research projects that make use of the Repository.

The access unit provides support for researchers to navigate the required project approval processes. Our process mapping project showed that researchers and students who attended our accreditation session prior to submitting proposals complete their research projects significantly faster. We have made further time savings for MCHP by working with the Health Research Ethics Board who now send automated reminders and updates

for researchers, which is work MCHP previously had to do. This year, 62 people attended accreditation sessions (292 people currently have active accreditation), we reviewed the feasibility of 84 new projects, and set up 62 new Researcher Agreements.

Remote access sites (RAS) enable data analysts and researchers access to the Repository from locations outside of the physical MCHP environment. These sites only provide terminal access to specific applications within MCHP.

Knowledge Translation

In keeping with our integrated approach to knowledge translation, we want to make sure that our research is focused on addressing problems that Manitoba's policy planners and service providers need answers to. Close involvement of policy staff in our project teams and advisory groups helps us to shape the questions early on and keeps our research focused on providing answers that can lead to improvements on the ground.

Our Need to Know Team, led by Dr. Randy Fransoo, with membership from Manitoba Health, Seniors and Active Living, Regional Health Authorities and other partners, has been meeting for more than 15 years, and continues to evolve. This group is essential for planning our interactive workshop days with staff of key organizations in Manitoba.

Over the past year, we have worked hard to communicate beyond our usual contacts, to share the knowledge of the data repository and the potential uses of the data with other faculties and government departments. Our Executive team and MCHP researchers have been busy making presentations to social scientists, environmental scientists and deputy ministers across the provincial government.

This year we have been growing our new Public Engagement Group, begun last year. The group meets regularly and acts in an advisory capacity, working in partnership with MCHP researchers to ensure that the needs and priorities of the public are considered in our research.

Government and Stakeholder Workshops

The Manitoba Centre for Health Policy brings government departments and rural health agencies together to exchange information about research in the province. These have grown over the years from focused days for health authorities, Department of Health, other government departments to a multi-department, multi-organization, multi-sectoral single Evidence to Action Workshop attended by in excess of 250 people in on September 25th this year. MCHP staff facilitated at tables where staff from different government departments mixed with staff from health authorities. The focus of the day was a whole government approach, considering multi-sectoral impacts of social programs, and system coordination. In addition, our report **The Health Status of and Access to Healthcare by Registered First Nation Peoples in Manitoba** was released, with a panel made up of MCHP and Indigenous researchers, and First Nation Band Leaders who gave a presentation and answered questions.

Social Media and Publication Tools

Over the past few years, MCHP has been promoting the release of its government research reports using a range of social media and publication tools. This includes making key message graphics to post findings on social media in an easy to share format.

We share public and media friendly infographics through press briefings, our website, Facebook and Twitter.

People

MCHP is fortunate to have a team of about 50 highly skilled staff who all contribute to the work of the Centre, including:

Research Scientists who design and implement research projects, including deliverables for Manitoba Health, Seniors and Active Living and for the Healthy Child Committee of Cabinet, as well as studies funded through peer reviewed research grants. Our research scientists also teach undergraduate and graduate courses and mentor students.

Research Coordinators who coordinate deliverable project activities.

Research Assistants who are students carrying out a variety of support tasks for research coordinators and our research support team.

Data, Documentation and Access team who support the development and use of the Population Research Data Repository.

Data Analysts who provide data analysis and statistical support for research projects.

Information Technology specialists who manage all our information technology services within MCHP and for researchers accessing our Remote Access Sites.

Graphic Designer who designs layouts for reports, ensures outputs look professional and polished, and creates infographics to support interpretation of data.

Knowledge Broker who plans and implements communications and knowledge translation strategies for research projects.

Finance Grant Accountants who set up and administer grants, ensure we all get paid on time, and monitor our finances.

Research Support who provide administrative, research and clerical support to researchers in the completion of deliverables and peer-reviewed journal articles.

Below is a list of all staff who worked at MCHP at any point between April 1, 2019 and March 31, 2020. Those who joined us during the year or were promoted are listed in *italics*, and those who we said goodbye to are underlined.

Executive

Dr. Alan Katz, Director, Professor, Senior Research Scientist

Charles Burchill, Associate Director (Data Access and Use)

Dr. Marni Brownell, Associate Director (Research), Professor, Senior Research Scientist

Dr. Selena Randall, Associate Director (Planning and Development)

Mark Smith, Associate Director (Repository), Research Scientist

Kara Dyck, Executive Assistant / Office Manager

Researchers

Dr. Alan Katz, Director, Professor, Senior Research Scientist

Dr. Marni Brownell, Associate Director, Research; Professor, Senior Research Scientist

Dr. Mariette Chartier, Assistant Professor, Research Scientist

Dr. Dan Chateau, Assistant Professor, Research Scientist/Statistician

Dr. Malcolm Doupe, Associate Professor, Senior Research Scientist

Dr. Randy Fransoo, Assistant Professor, Senior Research Scientist

Dr. Lisa Lix, Professor, Senior Research Scientist

Dr. Alyson Mahar, Assistant Professor, Research Scientist

Dr. Nathan C. Nickel, Assistant Professor, Research Scientist

Dr. Leslie Roos, Founding Director, Distinguished Professor, Senior Research Scientist

Dr. Noralou Roos, Founding Director, Professor, Senior Research Scientist

Dr. Chelsea Ruth, Assistant Professor, Research Scientist

Dr. Marcelo Urquia, Assistant Professor, Research Scientist

Dr. Jennifer Enns, Research Associate

Dr. Thekla Brunkert, Post-doctoral fellow

Dr. Andree-Ann Faford St Germain, Post-doctoral fellow

Dr. Heather Finnigan, Post-doctoral fellow

Research Lab Support

Dr. Elaine Burland, Research Manager

Lindsey Dahl, Research Project Coordinator

Dr. Amy Freier, Research Project Coordinator

Farzana Quddus, Research Project Coordinator

Lisa Zhang, Research Project Coordinator

Research Coordinators

Ruth-Ann Soodeen, Lead Research Coordinator

Nkiru Eze, Research Coordinator

Ina Koseva, Research Coordinator

Scott McCulloch, Research Coordinator

Jennifer Schultz, Research Coordinator

Dale Stevenson, Research Coordinator

Data Acquisition

Say Hong, Data Management Analyst

Sathi Rani Saha, Data Management Analyst

Dave Towns, Data Acquisition Officer

Repository Access and Documentation

Theresa Daniuk, Repository Access Assistant

Kara Dyck, Repository Access Coordinator

Emily Jones, Repository Access Assistant

Ken Turner, Repository Data Analyst

Program and Analysis Systems

Heather Prior, Lead Data Analyst

Alexandrea (Lexy) Anderson, Data Analyst

Wendy Au, Data Analyst

Hui Chen, Data Analyst

Matt Dahl, Data Analyst

Shelley Derksen, Data Analyst

Gilles Detillieux, Data Analyst

Roxana Dragan, Data Analyst

Oke Ekuma, Data Analyst & Statistical Consultant

Joykrishna Sarkar, Data Analyst

Monica Sirski, Data Analyst

Angela Tan, Data Analyst

Carole Taylor, Data Analyst

Randy Walld, Data Analyst

Marina Yogendran, Data Analyst

Graphic Design and Communications

Cara Jonasson, Graphic Designer

Jennifer Pepneck, Knowledge Broker

Information Technology

Rod McRae, Information Technology Manager

Darrin Halabuza, Information Technology Support

Finance

Sophie Buternowsky, Senior Grants Accountant

Richard Salas, Finance and HR Assistant

Jeannie Chen, Grants Accountant

Ariel Bautista, Grants Accountant

Research Support

Eileen Boriskewich, Research Support

Research Assistants

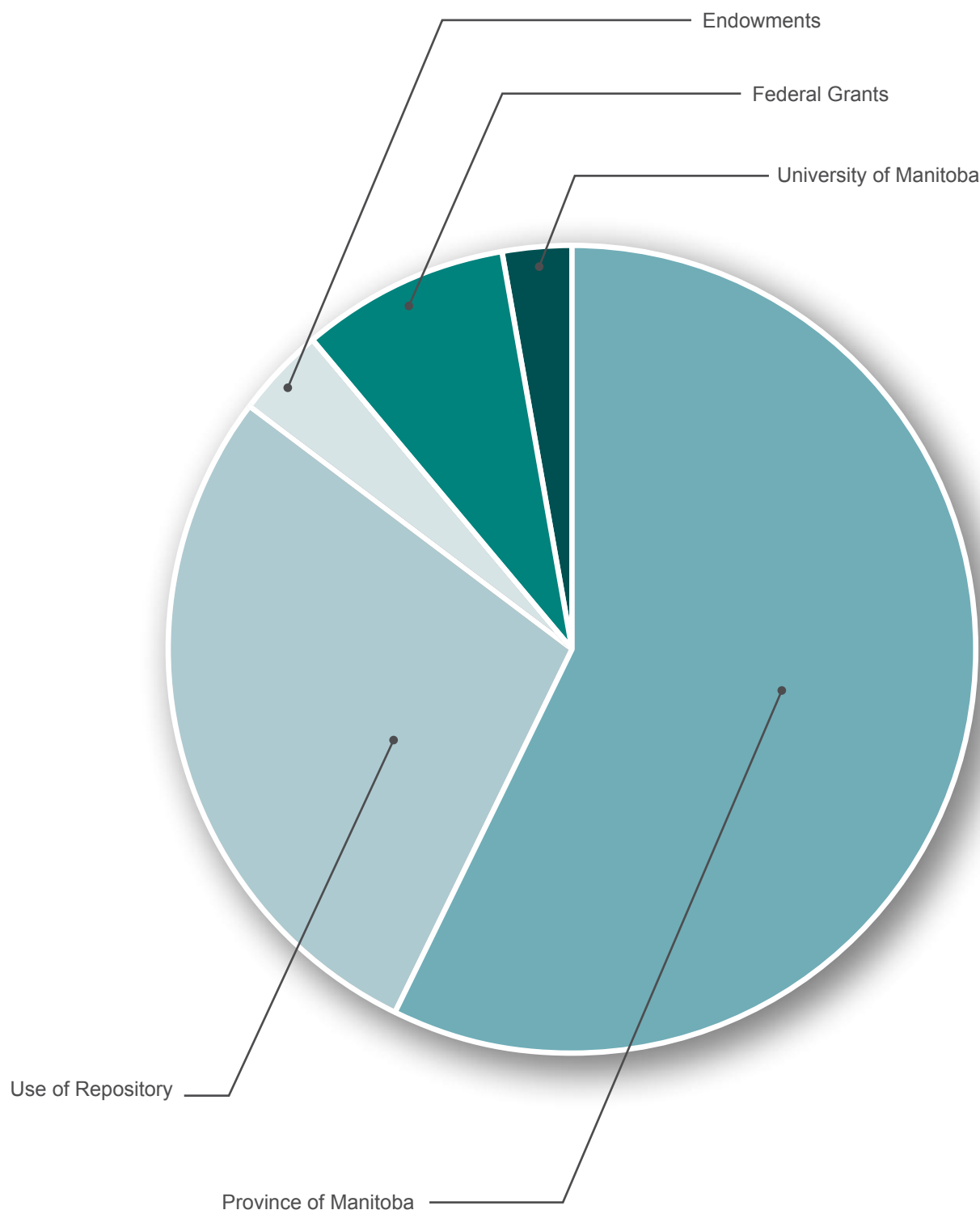
Susan Burchill, Research Assistant

John-Michael Bowes, Research Assistant



MCHP Funding Sources

MCHP has a number of different funding sources that directly support the maintenance of the Manitoba Population Research Data Repository, and the delivery of research that uses it. These include Manitoba Government, Peer Reviewed Grants, University of Manitoba, Endowments and Awards and Revenue from use of the Repository. In 2019-20, these funds amounted to almost \$6Million.



Advisory Board

MCHP is supported by an advisory board representing:

- MCHP
- Seven members appointed by Manitoba Health, Seniors and Active Living (deputy ministers from departments sharing data with us)
- Seven members appointed by University of Manitoba (university administrative staff and external advisors).

The advisory board meets twice a year to hear about the Centre's activities and to provide advice on areas of development for the Centre.

Below, are the current members of the Advisory Board, we thank departing members David Dyson, Jim Hrichishen, Jay Rodgers, Dr. Rob Santos, Scott Sinclair, Jim Slater, Dr. David Collins, Réal Cloutier, and Deborah Malazdrewicz for their service to the Advisory Board over the past few years.

Board Chair

- Dr. Peter Nickerson, Vice-Dean, Research, Rady Faculty of Health Sciences

Members by Position

- Dr. Alan Katz, Director, Manitoba Centre for Health Policy (MCHP)
- Ms. Karen Herd, Deputy Minister, Manitoba Health, Seniors and Active Living (MHSAL)
- Drs. Noralou Roos and Leslie Roos, Founding Directors
- Dr. Brian Postl, Dean and Vice-Provost, Rady Faculty of Health Sciences

Appointed Members: Up to seven appointees of Manitoba Health Seniors & Active Living

1. Mr. Dave Wright, Deputy Minister, Justice and Deputy Attorney General
2. Mr. John Leggat, Deputy Minister, Families
3. Ms. Dana Rudy, Acting Deputy Minister, Education
4. Mr. Richard Groen, Deputy Minister, Finance
5. Mr. Tareq Al-Zabet, Deputy Minister, Infrastructure
6. VACANT
7. VACANT

Appointed Members: Up to seven appointees of the University of Manitoba

1. Dr. Todd Mondor, Deputy Provost, Academic Planning and Programs, University of Manitoba
2. Dr. Digvir Jayas, Vice-President, Research and International, University of Manitoba
3. Dr. Terry Klassen, Academic Director, George and Fay Yee Centre for Healthcare Innovation
4. Reg Toews, Member of the Community
5. Connie Walker, President and CEO, United Way of Winnipeg
6. Michael Schull, President and CEO, Institute for Clinical Evaluative Sciences
7. VACANT

Ex Officio Members

- Phil Jarman, Executive Director and Chief Data Officer, Information Management & Analytics, MHSAL
- Dan Skwarchuk, CFO & ADM, Administration & Finance, MHSAL
- Dr. Marni Brownell, Associate Director of Research, MCHP
- Dr. Selena Randall, Associate Director, Planning and Development, MCHP
- Charles Burchill, Associate Director, Data Access and Use, MCHP
- Dr. Nathan Nickel, Associate Director, Deliverables, MCHP

MCHP Staff Support to Advisory Committee

- Kara Dyck, Executive Assistant