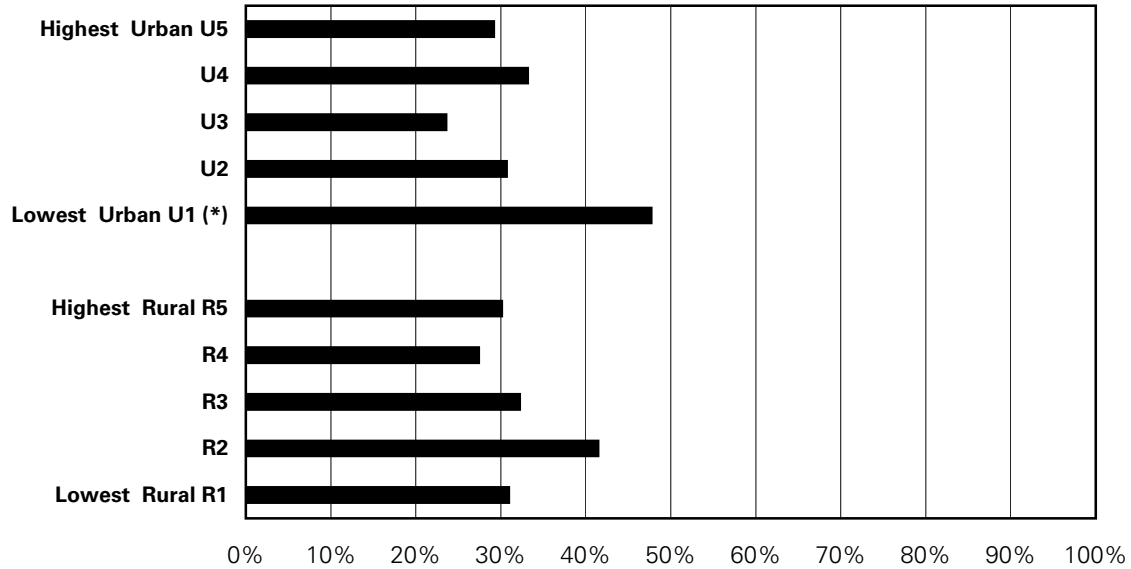


**Figure A.10.12: Proportion of Children Who Are Inactive
Based On The Total Daily Expenditure Values by Income Quintile**

Sex-adjusted percent of sample from the CCHS 1.1, 2.1, 2.2 & 3.1 cycles combined (2001, 2003, 2004 & 2005)
Children ages 12-19



'**' indicates that area's rate is significantly different from the Manitoba average

'w' indicates a warning - rates are highly variable; interpret with caution

's' indicates data suppressed due to small numbers

Total Manitoba sample size = 1029

Source: Manitoba Centre for Health Policy, 2008