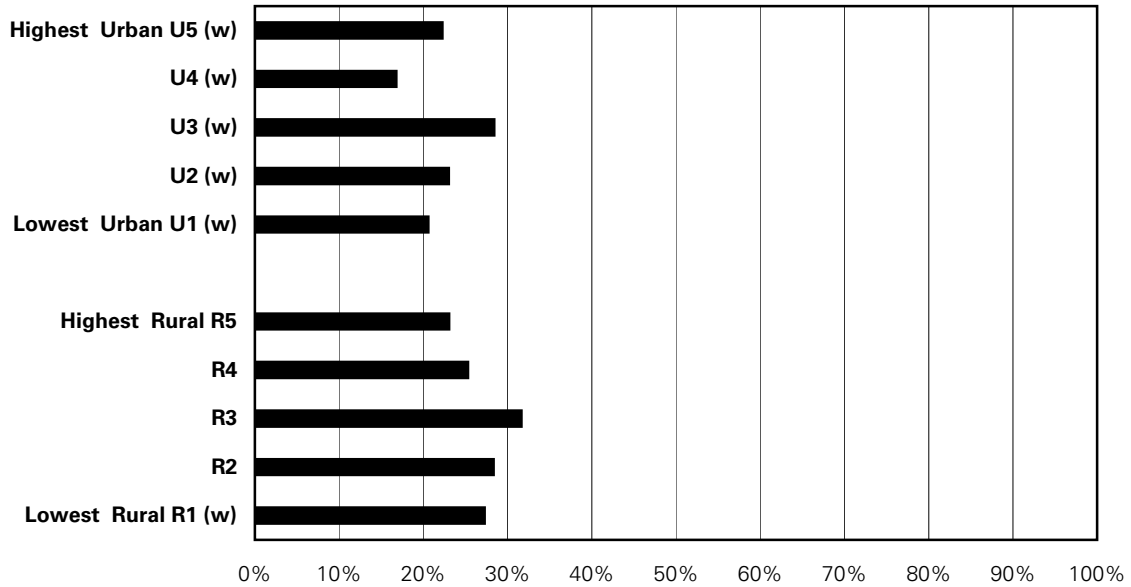


## Figure A.11.14: Younger Adolescents Who Consumed Alcohol in the Past Year Rates by Income Quintile

Sex-adjusted percent of sample from the CCHS 1.1, 2.1 2.2 & 3.1 cycles combined (2001, 2003, 2004 & 2005)  
Adolescents ages 12-15 who drank alcohol in the past 12 months



'\*\*' indicates that area's rate is significantly different from the Manitoba average

'w' indicates a warning - rates are highly variable; interpret with caution

's' indicates data suppressed due to small numbers

Total Manitoba sample size = 472

Source: Manitoba Centre for Health Policy, 2008