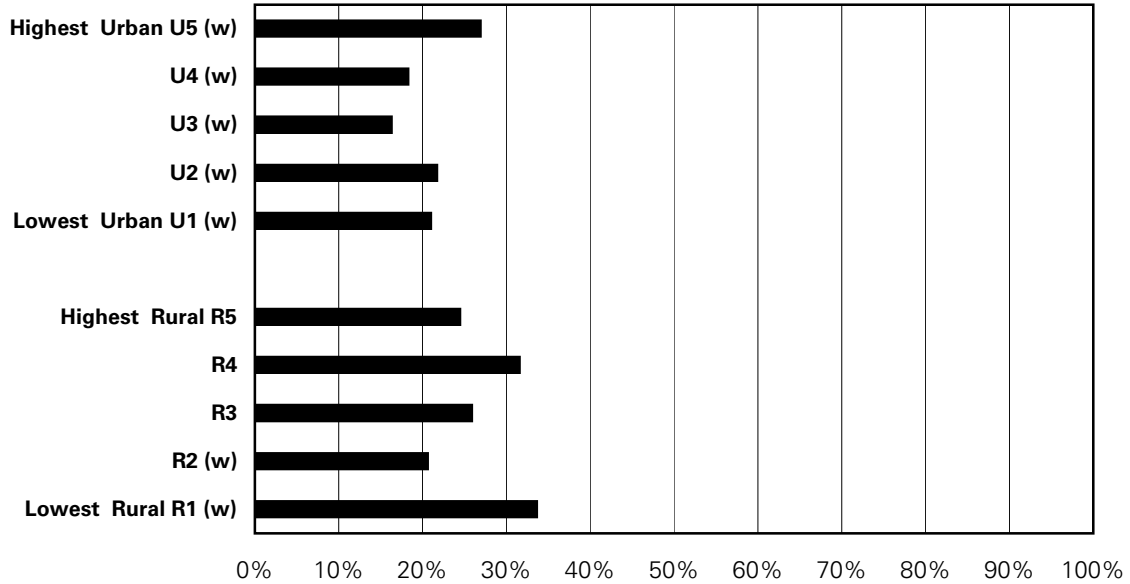


Figure A.11.25: Older Adolescents Who Consumed Alcohol Weekly Rates by Income Quintile

Sex-adjusted percent of sample from the CCHS 1.1, 2.1 2.2 & 3.1 cycles combined (2001, 2003, 2004 & 2005)
Adolescents ages 16-19 who drank alcohol at least once a week in the past year



0% 10% 20% 30% 40% 50% 60% 70% 80% 90% 100%

'**' indicates that area's rate is significantly different from the Manitoba average

'w' indicates a warning - rates are highly variable; interpret with caution

's' indicates data suppressed due to small numbers

Total Manitoba sample size = 423

Source: Manitoba Centre for Health Policy, 2008