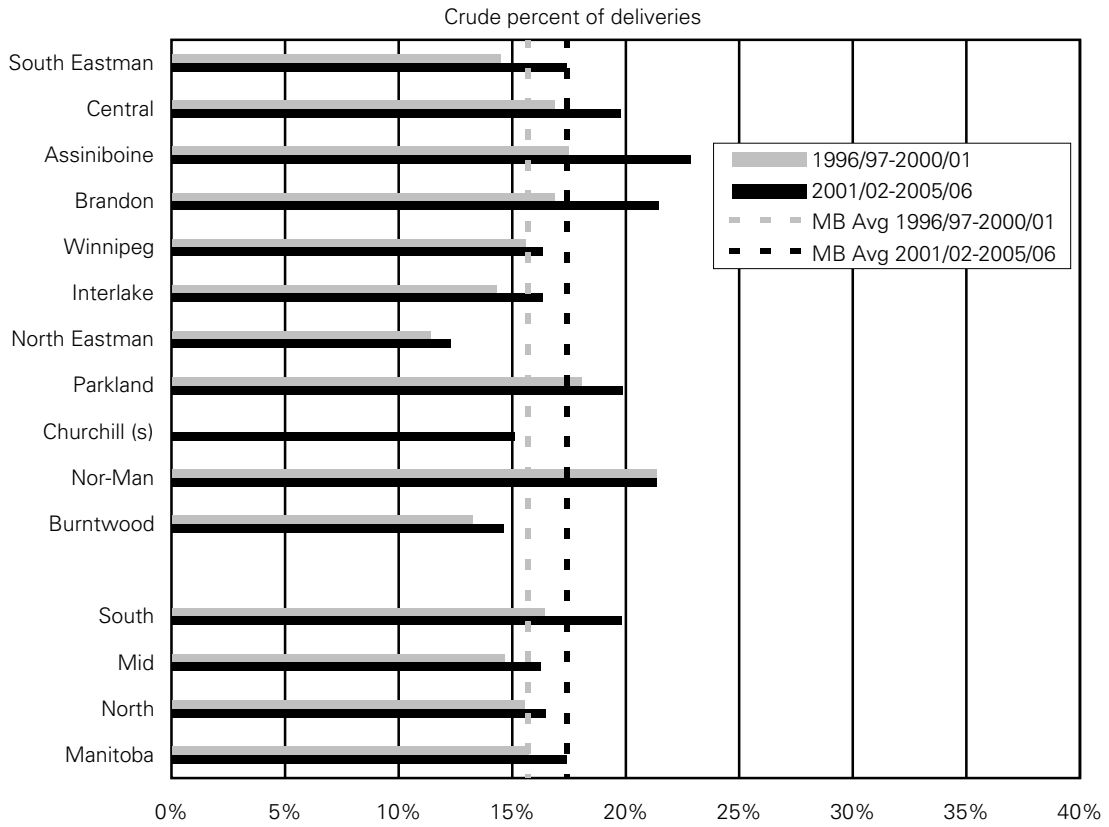


Figure A.3.30: Caesarean Section Rate of Women Aged 20-29 by RHA

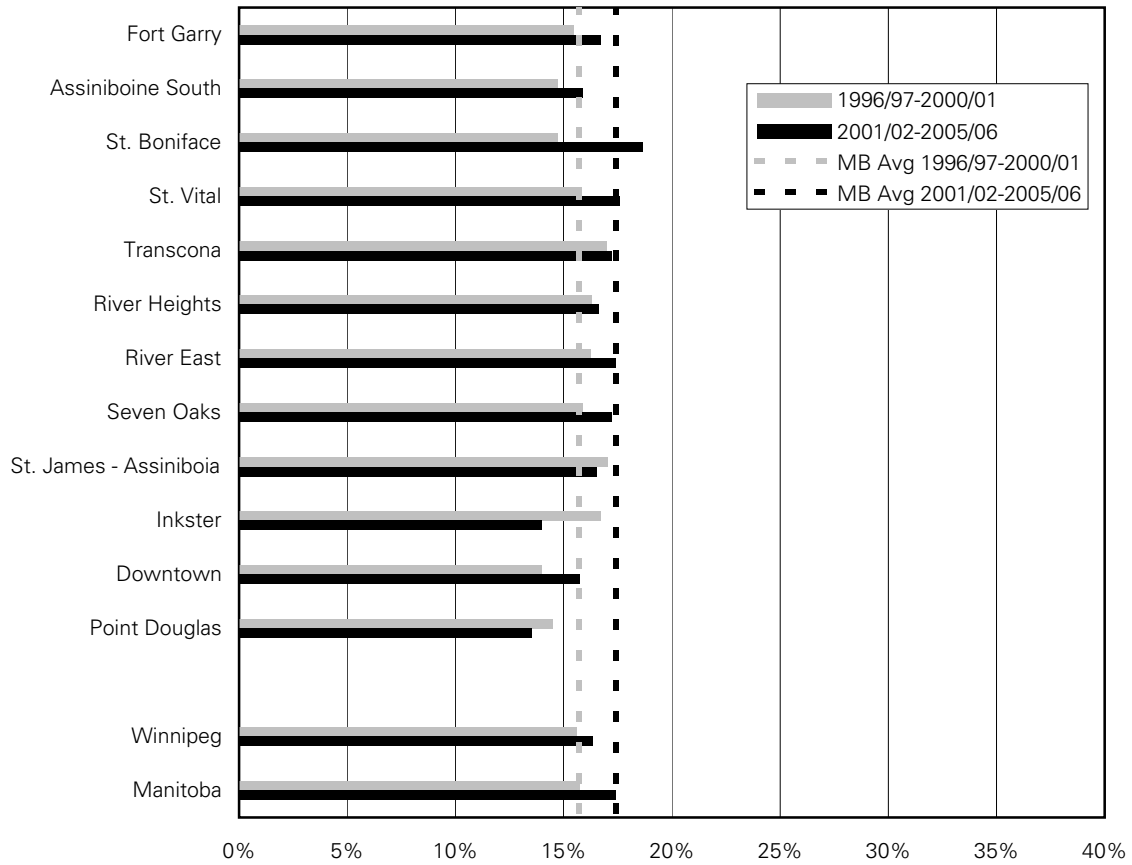


Note: Significance testing is not available
 's' indicates data suppressed due to small numbers

Source: Manitoba Centre for Health Policy,

**Figure A.3.31: Caesarean Section Rates of Women Aged 20-29
by Winnipeg Community Area**

Crude percent of deliveries



'1' indicates area's rate was statistically different from Manitoba average in first time period

'2' indicates area's rate was statistically different from Manitoba average in second time period

't' indicates change over time was statistically significant for that area

's' indicates data suppressed due to small numbers

Source: Manitoba Centre for Health Policy, 2008

Table A.3.9: Caesarean Section Rate of Women Aged 20-29

Region	Caesarean Section Rates			
	Number Observed per Year	CRUDE rate percent	Number Observed per Year	CRUDE rate percent
	1996/97-2000/01		2001/02-2005/06	
South Eastman	59.0	14.5%	77.2	17.4%
Central	134.0	16.9%	153.0	19.8%
Assiniboine	73.0	17.5%	84.0	22.9%
Brandon	54.4	16.9%	77.4	21.5%
Winnipeg	576.6	15.6%	548.4	16.3%
Interlake	60.6	14.3%	65.6	16.3%
North Eastman	28.8	11.4%	28.0	12.3%
Parkland	51.6	18.1%	48.0	19.9%
Churchill			1.6	15.1%
Nor-Man	56.6	21.4%	49.6	21.4%
Burntwood	82.6	13.3%	87.2	14.6%
South	266.0	16.4%	314.2	19.8%
Mid	141.0	14.7%	141.6	16.2%
North	139.4	15.6%	138.4	16.5%
Manitoba Public Trustee	1177.4	15.7%	1220.2	17.4%

blank cells = suppressed

Source: Manitoba Centre for Health Policy, 2008

Region	Caesarean Section Rates			
	Number Observed per Year	CRUDE rate percent	Number Observed per Year	CRUDE rate percent
	1996/97-2000/01		2001/02-2005/06	
Fort Garry	46.4	15.4%	43.2	16.7%
Assiniboine South	17.8	14.7%	15.6	15.9%
St. Boniface	36.6	14.7%	39.2	18.6%
St. Vital	49.6	15.8%	51.0	17.6%
Transcona	36.4	17.0%	32.4	17.2%
River Heights	41.6	16.3%	34.8	16.6%
River East	86.2	16.2%	82.4	17.4%
Seven Oaks	46.8	15.9%	47.4	17.2%
St. James - Assiniboia	50.2	17.0%	42.2	16.5%
Inkster	38.6	16.7%	31.0	13.9%
Downtown	75.4	14.0%	81.4	15.7%
Point Douglas	51.0	14.5%	47.8	13.5%
Winnipeg	576.6	15.6%	548.4	16.3%

blank cells = suppressed

Source: Manitoba Centre for Health Policy, 2008